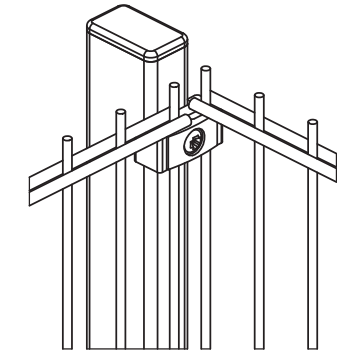
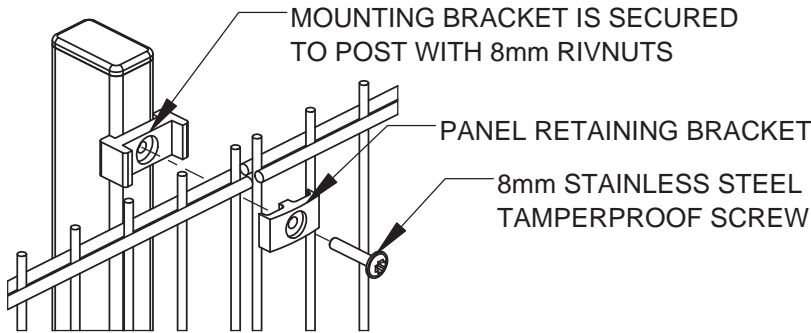


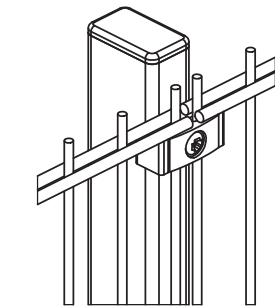
CORNER POST



PANEL MOUNTING DETAIL

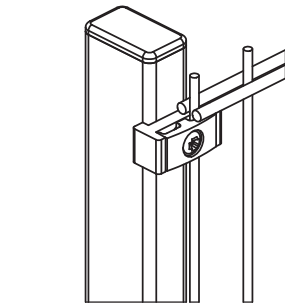


LINE POST

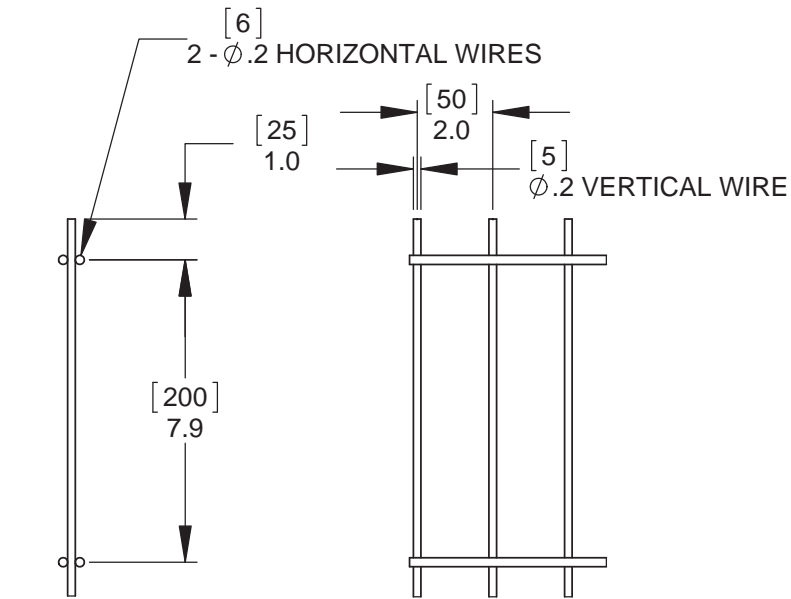


HEIGHT	QTY.
4' [1.2]	3
6' [1.8]	4
8' [2.4]	5

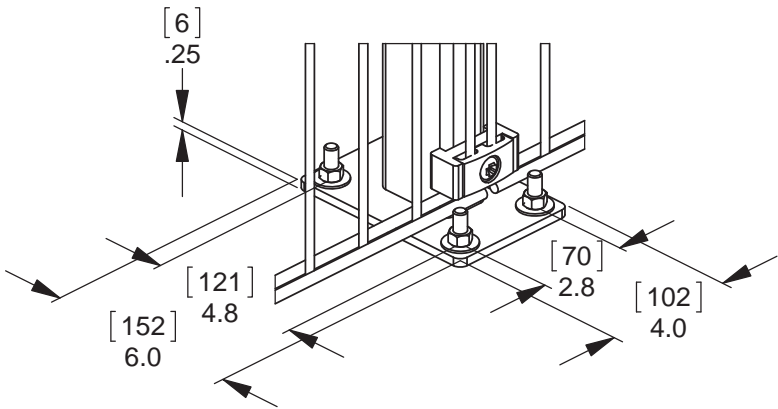
END POST



PALLAS LITE WELDED WIRE PANEL



FLANGE MOUNT



1.5 [38] x 2.5 [64] x .13 [3] HSS POST

[1230]
48.4

[1219]
48.0

[2520]
99.2 TYP. POST SPACING

[2510]
98.8
PANEL WIDTH

POSTS SHOWN INSTALLED BY DRIVEN METHOD
SEE DETAIL BELOW FOR FLANGE MOUNT OPTION

OPTIONAL INSTALLATION METHOD
POSTS SET IN CONCRETE FOOTING

Description: 4' [1.2M] PALLAS LITE WELDED WIRE FENCE 1.5 [38] x 2.5 [64] RECTANGULAR POSTS		
Customer / Project Name: -		
Finish: SEE NOTES	Date: 6/29/2017	
Drawing No. 4' PALLAS LITE R	Rev.	Sheet: 1 of 1

NOTES:
FINISH:
- GALVANIZED
- BLACK POLYESTER POWDER COAT

90 Lowson Crescent
Winnipeg, Manitoba, Canada, R3P 2H8
Phone: 1-866-300-1110
Fax: 1-204-284-1868
Web: www.wallaceperimetersecurity.com