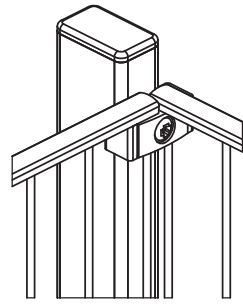
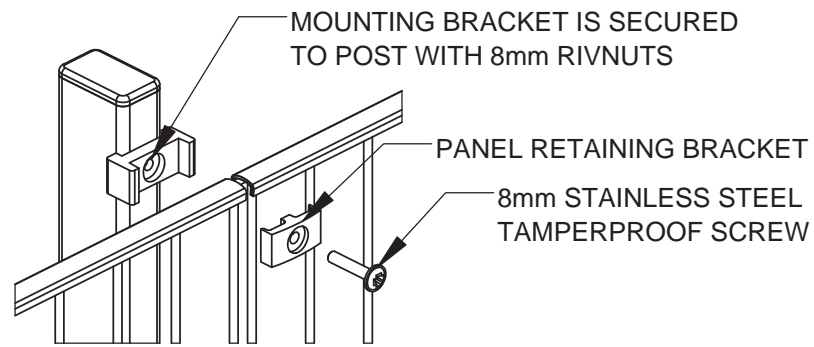


**CORNER POST**

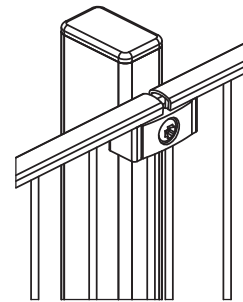


**PANEL MOUNTING DETAIL**

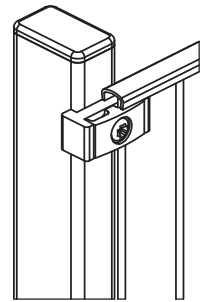


HEIGHT	QTY.
4' [1.2]	3
6' [1.8]	4
8' [2.4]	5

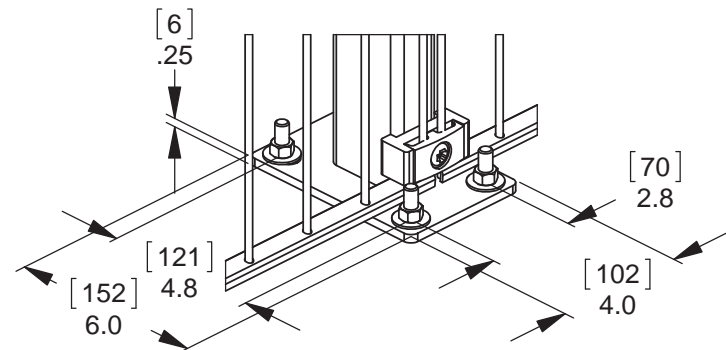
**LINE POST**



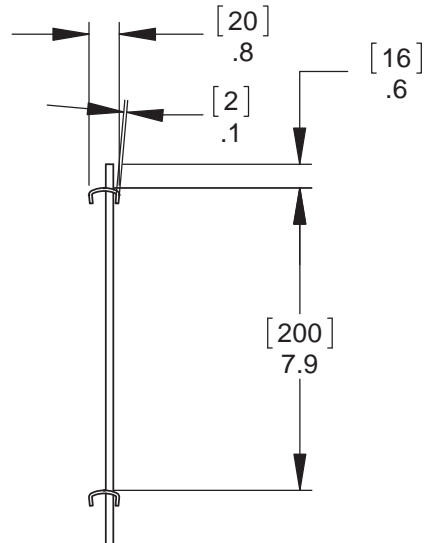
**END POST**



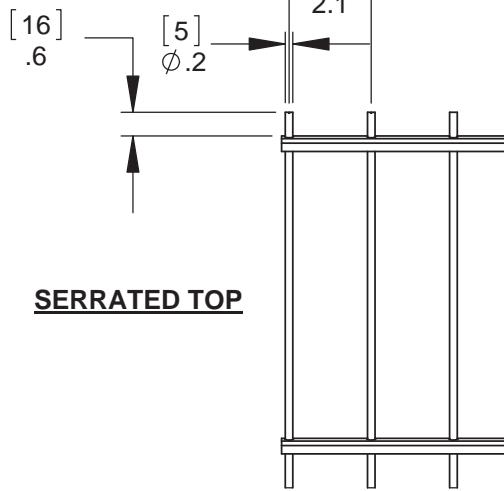
**FLANGE MOUNT**



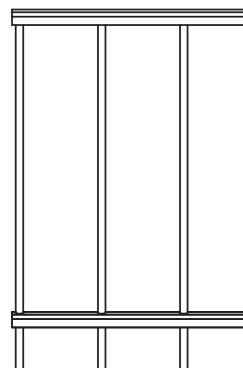
**UNI WELDED WIRE PANEL**



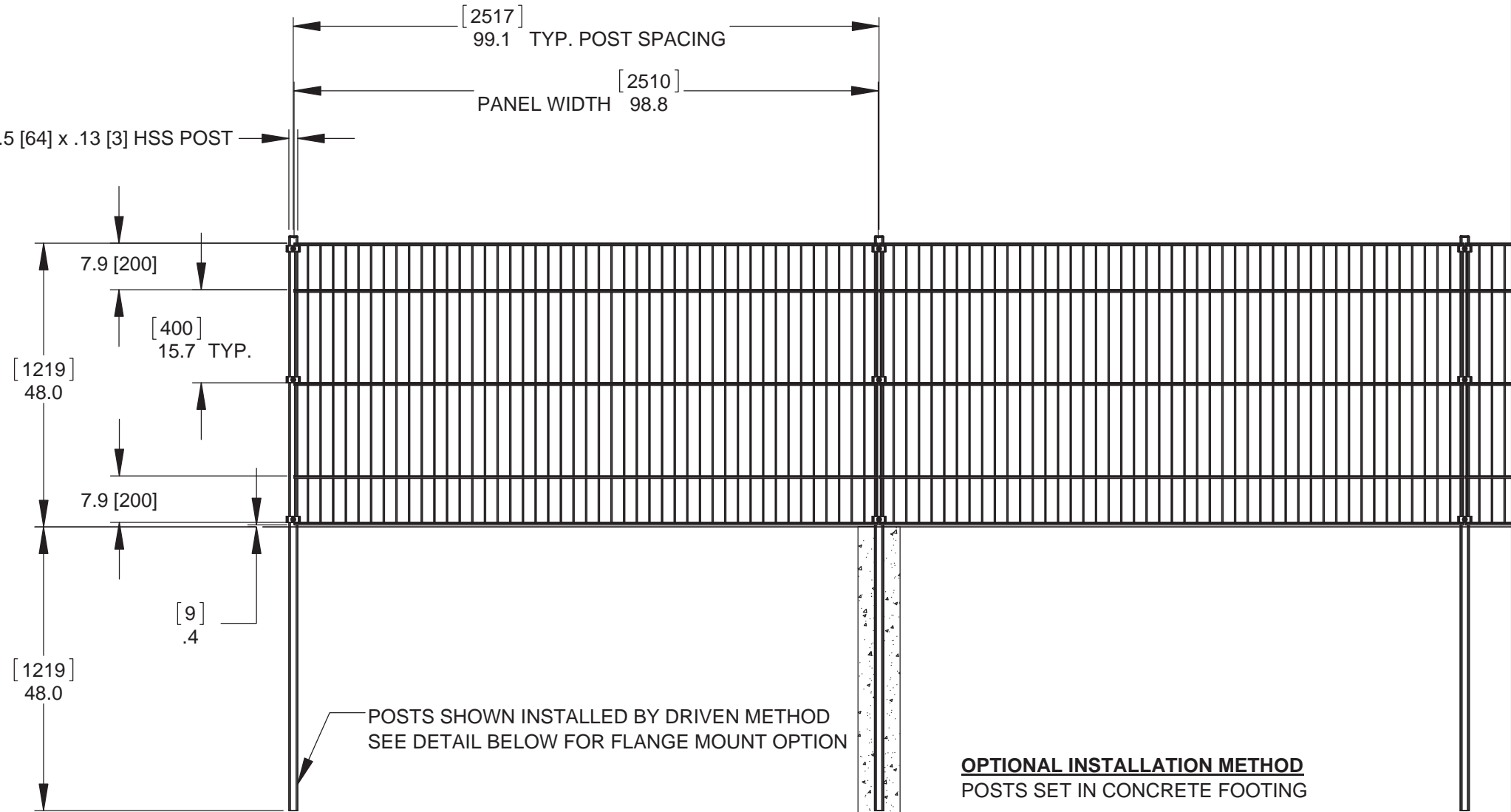
**SERRATED TOP**



**SMOOTH TOP**



1.5 [38] x 2.5 [64] x .13 [3] HSS POST



**OPTIONAL INSTALLATION METHOD**  
POSTS SET IN CONCRETE FOOTING

- NOTES:**  
FINISH:  
- GALVANIZED  
- BLACK POLYESTER POWDER COAT



90 Lowson Crescent  
Winnipeg, Manitoba, Canada, R3P 2H8  
Phone: 1-866-300-1110  
Fax: 1-204-284-1868  
Web: www.wallaceintl.com

Description: <b>4' [1.2M] UNI WELDED WIRE FENCE</b> 1.5 [38] x 2.5 [64] RECTANGULAR POSTS		
Customer / Project Name: -		
Finish: <b>SEE NOTES</b>	Date: 11/2/2017	
Drawing No. <b>4' UNI</b>	Rev.	Sheet: 1 of 1