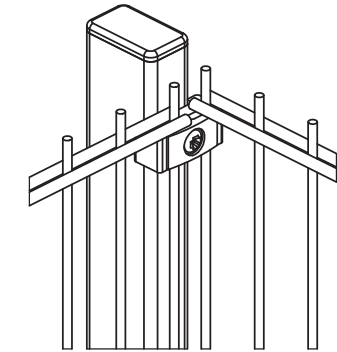
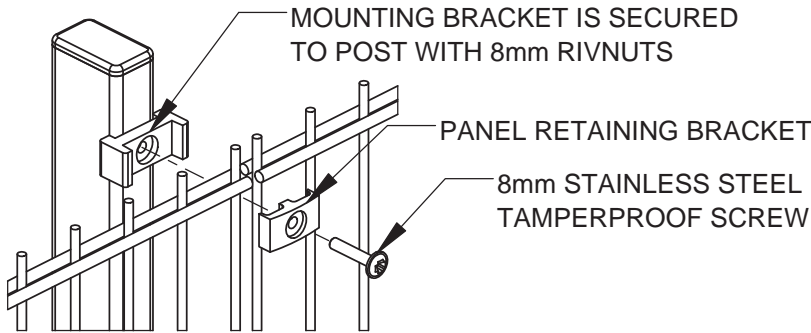


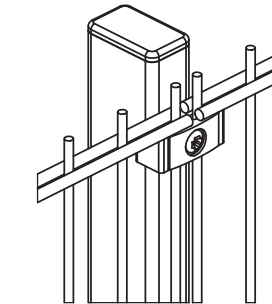
CORNER POST



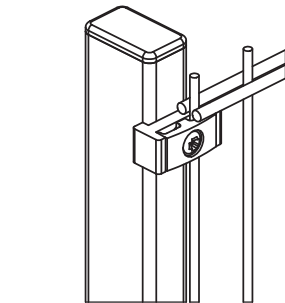
PANEL MOUNTING DETAIL



LINE POST



END POST



HEIGHT	QTY.
4' [1.2]	3
6' [1.8]	4
8' [2.4]	5

1.5 [38] x 2.5 [64] x .13 [3] HSS POST

[1830]
72.0

[1219]
48.0

[2520]
99.2 TYP. POST SPACING

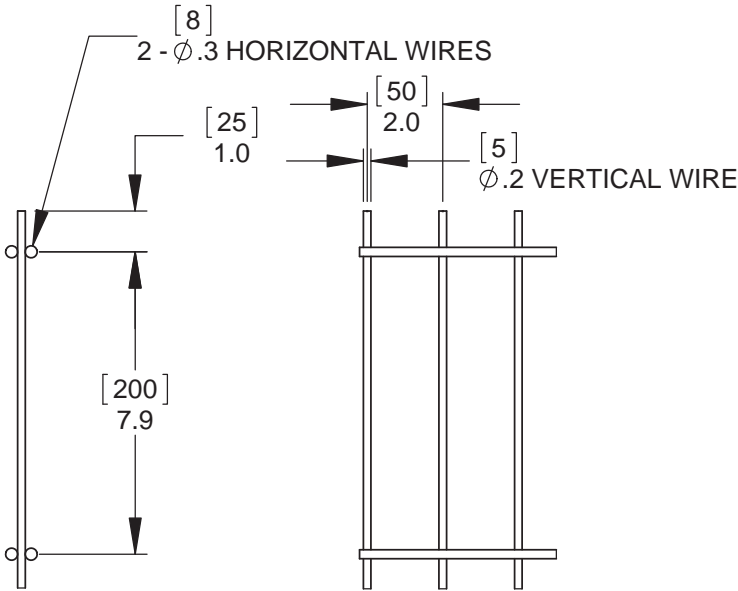
[2510]
PANEL WIDTH 98.8

POSTS SHOWN INSTALLED BY DRIVEN METHOD
SEE DETAIL BELOW FOR FLANGE MOUNT OPTION

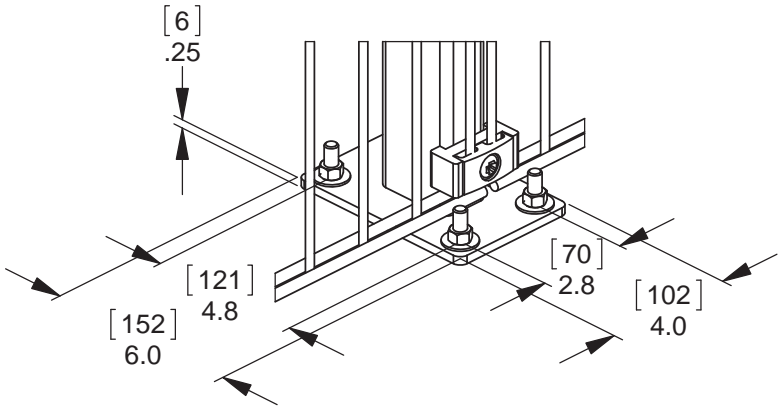
OPTIONAL INSTALLATION METHOD
POSTS SET IN CONCRETE FOOTING

Ø 8.0

PALLAS WELDED WIRE PANEL



FLANGE MOUNT



NOTES:
FINISH:
- GALVANIZED
- BLACK POLYESTER POWDER COAT



90 Lowson Crescent
Winnipeg, Manitoba, Canada, R3P 2H8
Phone: 1-866-300-1110
Fax: 1-204-284-1868
Web: www.wallaceperimetersecurity.com

Description: 6' [1.8M] PALLAS WELDED WIRE FENCE 1.5 [38] x 2.5 [64] RECTANGULAR POSTS		
Customer / Project Name: -		
Finish: SEE NOTES	Date: 6/29/2017	
Drawing No. 6' PALLAS R	Rev.	Sheet: 1 of 1