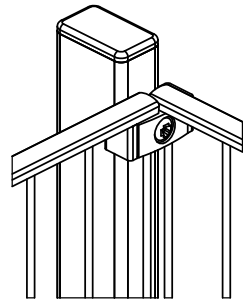
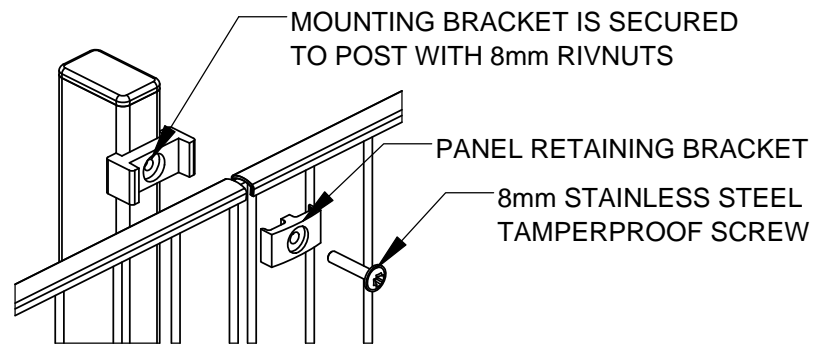


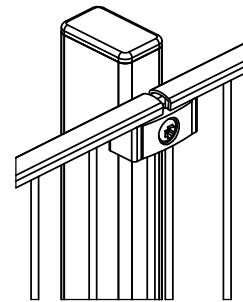
**CORNER POST**



**PANEL MOUNTING DETAIL**

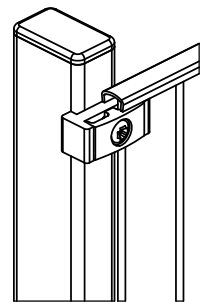


**LINE POST**

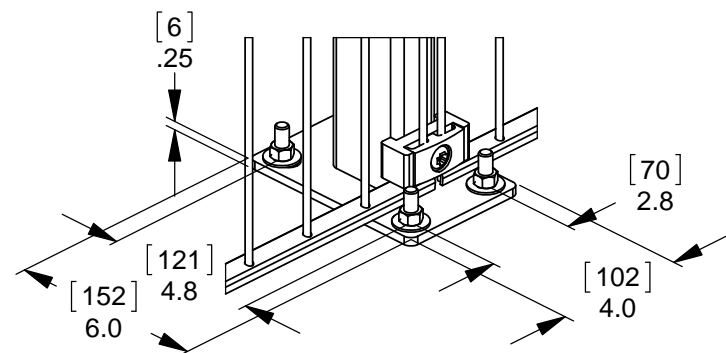


HEIGHT	QTY.
4' [1.2]	3
6' [1.8]	4
8' [2.4]	5

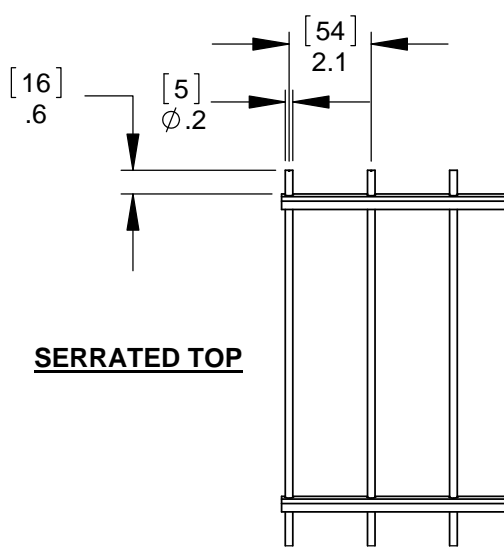
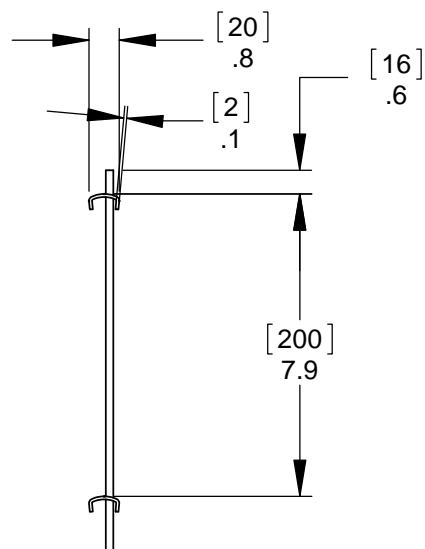
**END POST**



**FLANGE MOUNT**

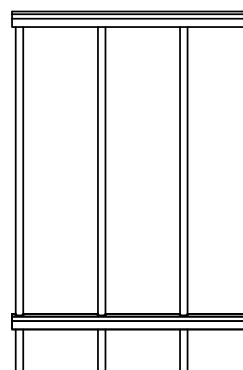


**UNI-MID WELDED WIRE PANEL**



**SERRATED TOP**

**SMOOTH TOP**



1.5 [38] x 2.5 [64] x .13 [3] HSS POST

[1819]  
71.6

[1219]  
48.0

[9]  
.4

POSTS SHOWN INSTALLED BY DRIVEN METHOD  
SEE DETAIL BELOW FOR FLANGE MOUNT OPTION

**OPTIONAL INSTALLATION METHOD**  
POSTS SET IN CONCRETE FOOTING

[203]  
Ø8.0

**NOTES:**

- FINISH:  
- GALVANIZED  
- BLACK POLYESTER POWDER COAT



90 Lowson Crescent  
Winnipeg, Manitoba, Canada, R3P 2H8  
Phone: 1-866-300-1110  
Fax: 1-204-284-1868  
Web: www.wallaceintl.com

Description:		
<b>6' [1.8M] UNI SECURITY WELDED WIRE FENCE</b>		
1.5 [38] x 2.5 [64] RECTANGULAR POSTS		
Customer / Project Name:		
-		
Finish:	Date:	
SEE NOTES	10/4/2017	
Drawing No.	Rev.	Sheet:
<b>6' UNI SECURITY</b>		1 of 1