

DIMENSIONS ARE SHOWN IN MILLIMETERS. DIMENSIONS SHOWN IN [] ARE IN INCHES

Delta Model	H	A	B	C	D	U max	SP
50/200	2000 [78.7]	5260 [207.1]	2300 [90.6]	5260 [207.1]	4875 [191.9]	12960 [510.2]	141 [5.55]
50/250	2500 [98.4]						
60/200	2000 [78.7]	6160 [242.5]	2300 [90.6]	6160 [242.5]	5775 [227.4]	14760 [581.1]	141 [5.55]
60/250	2500 [98.4]						
70/200	2000 [78.7]	7460 [293.7]	2800 [110.2]	7460 [293.7]	7075 [278.5]	17860 [703.1]	143 [5.63]
70/250	2500 [98.4]						
85/200	2000 [78.7]	8660 [340.9]	2800 [110.2]	8660 [340.9]	8275 [325.8]	20260 [797.6]	143 [5.63]
85/250	2500 [98.4]						
95/200	2000 [78.7]	9560 [376.4]	2800 [110.2]	9560 [376.4]	9175 [361.2]	22060 [868.5]	141 [5.55]

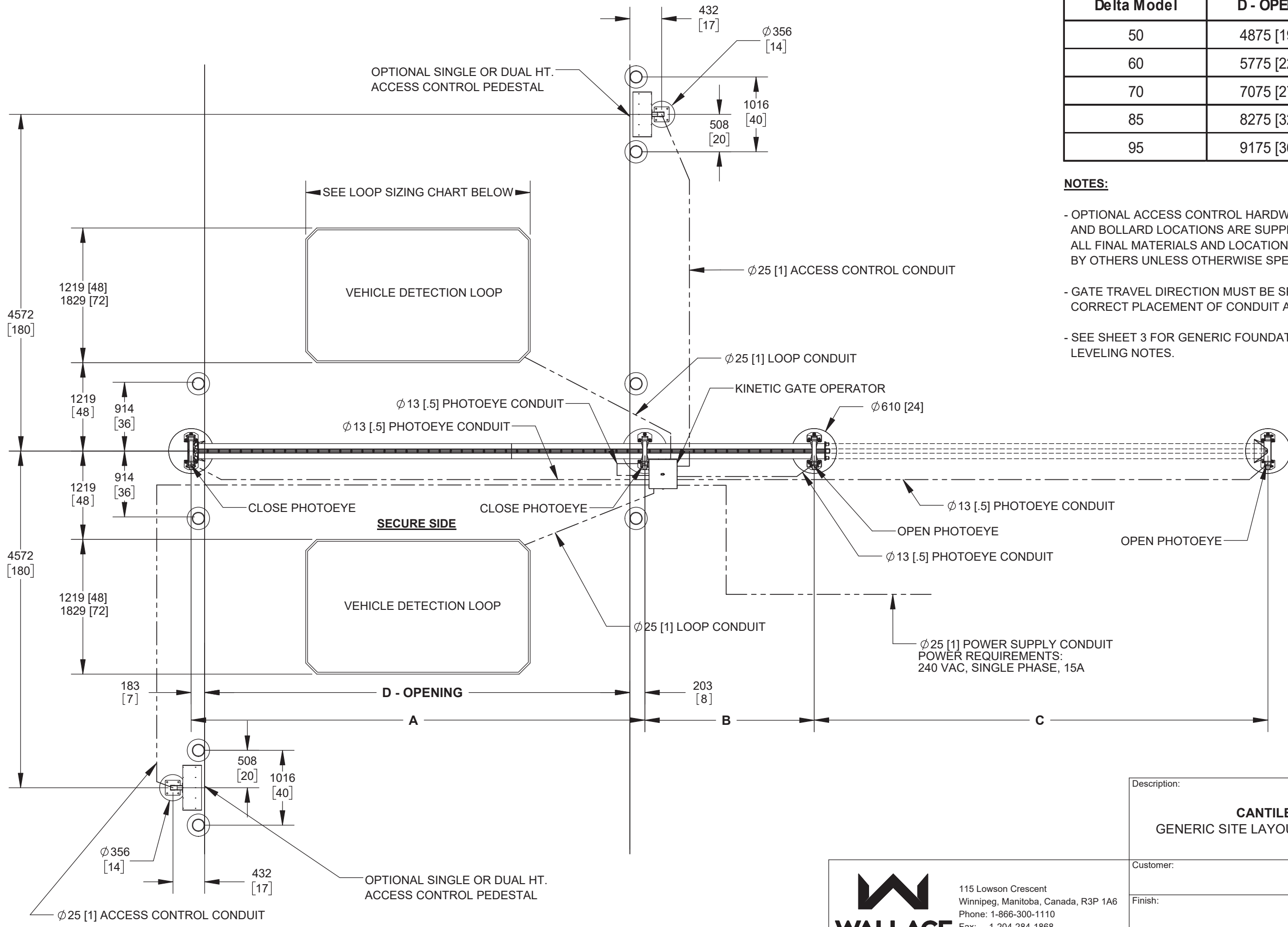
NOTE:
PRODUCT MUST BE INSTALLED IN ACCORDANCE WITH ASTM: F-2200 & UL325

FINISH NOTES:
STANDARD FINISH:
HOT DIPPED GALVANIZED ON ALL STEEL COMPONENTS
MILL FINISH ON ALL ALUMINUM COMPONENTS
OPTIONAL POWDER COAT FINISH AVAILABLE, RAL# TO BE SPECIFIED



115 Lowson Crescent
Winnipeg, Manitoba, Canada, R3P 1A6
Phone: 1-866-300-1110
Fax: 1-204-284-1868
Web: www.wallaceperimetersecurity.com

Description: DELTA CANTILEVER SLIDE GATE STANDARD DIMENSIONS		
Customer:		
Finish: SEE FINISH NOTES		Date: 11/25/2022
Drawing No. DELTA-09-26-22	Rev. A	Sheet: 1 of 6



Delta Model	D - OPENING	LOOP WIDTH
50	4875 [191.9]	3658 [144.0]
60	5775 [227.4]	4267 [168.0]
70	7075 [278.5]	5486 [216.0]
85	8275 [325.8]	6096 [240.0]
95	9175 [361.2]	6096 [240.0]

- NOTES:**
- OPTIONAL ACCESS CONTROL HARDWARE, VEHICLE DETECTION LOOP AND BOLLARD LOCATIONS ARE SUPPLIED AS A REFERENCE ONLY. ALL FINAL MATERIALS AND LOCATIONS ARE SUPPLIED AND INSTALLED BY OTHERS UNLESS OTHERWISE SPECIFIED AT TIME OF ORDER.
 - GATE TRAVEL DIRECTION MUST BE SPECIFIED AT TIME OF ORDER FOR CORRECT PLACEMENT OF CONDUIT AND GATE OPERATOR.
 - SEE SHEET 3 FOR GENERIC FOUNDATION SIZING, INSTALLATION AND LEVELING NOTES.



115 Lawson Crescent
Winnipeg, Manitoba, Canada, R3P 1A6
Phone: 1-866-300-1110
Fax: 1-204-284-1868
Web: www.wallaceperimetersecurity.com

Description: DELTA CANTILEVER SLIDE GATE GENERIC SITE LAYOUT / CONDUIT REQUIREMENTS		
Customer:		
Finish:	Date: 11/25/2022	
Drawing No. DELTA-09-26-22	Rev. A	Sheet: 2 of 6

FIGURE 3-1

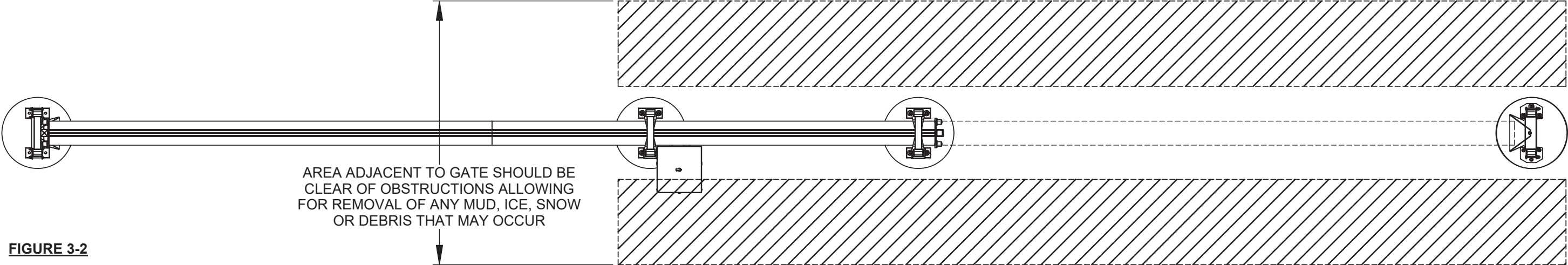


FIGURE 3-2

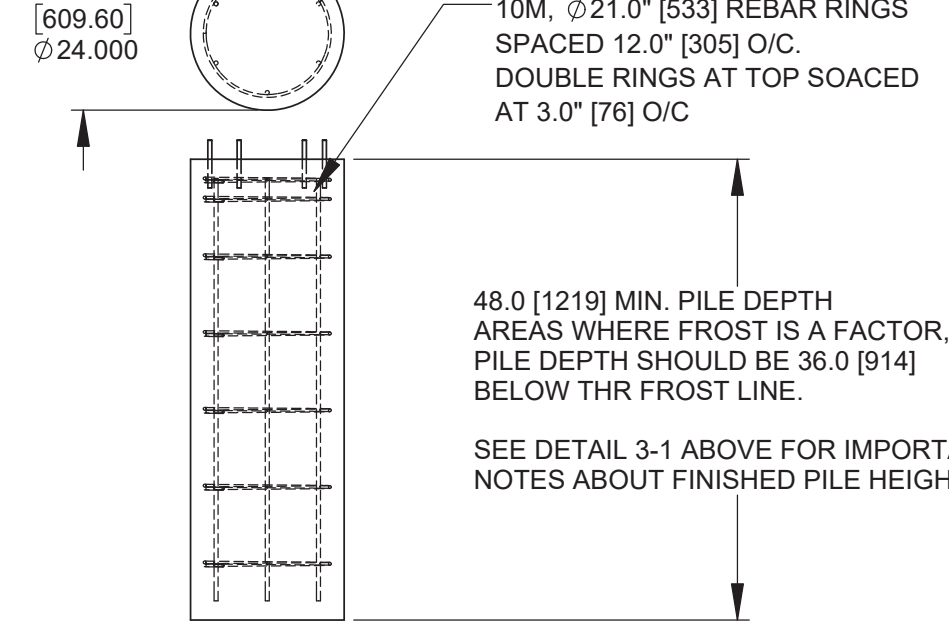
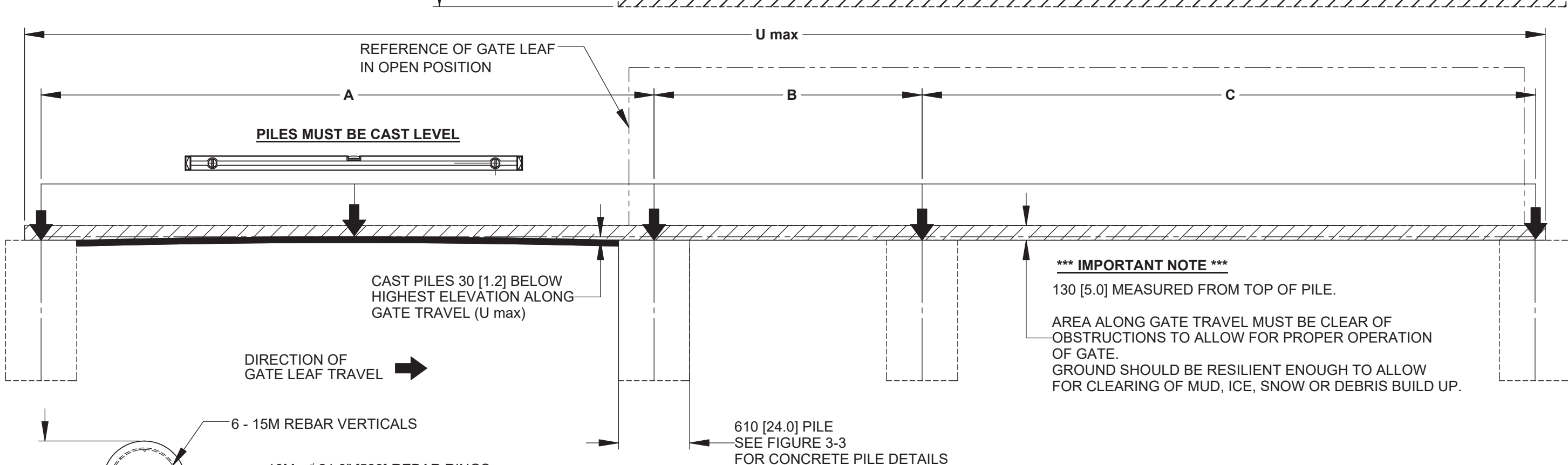


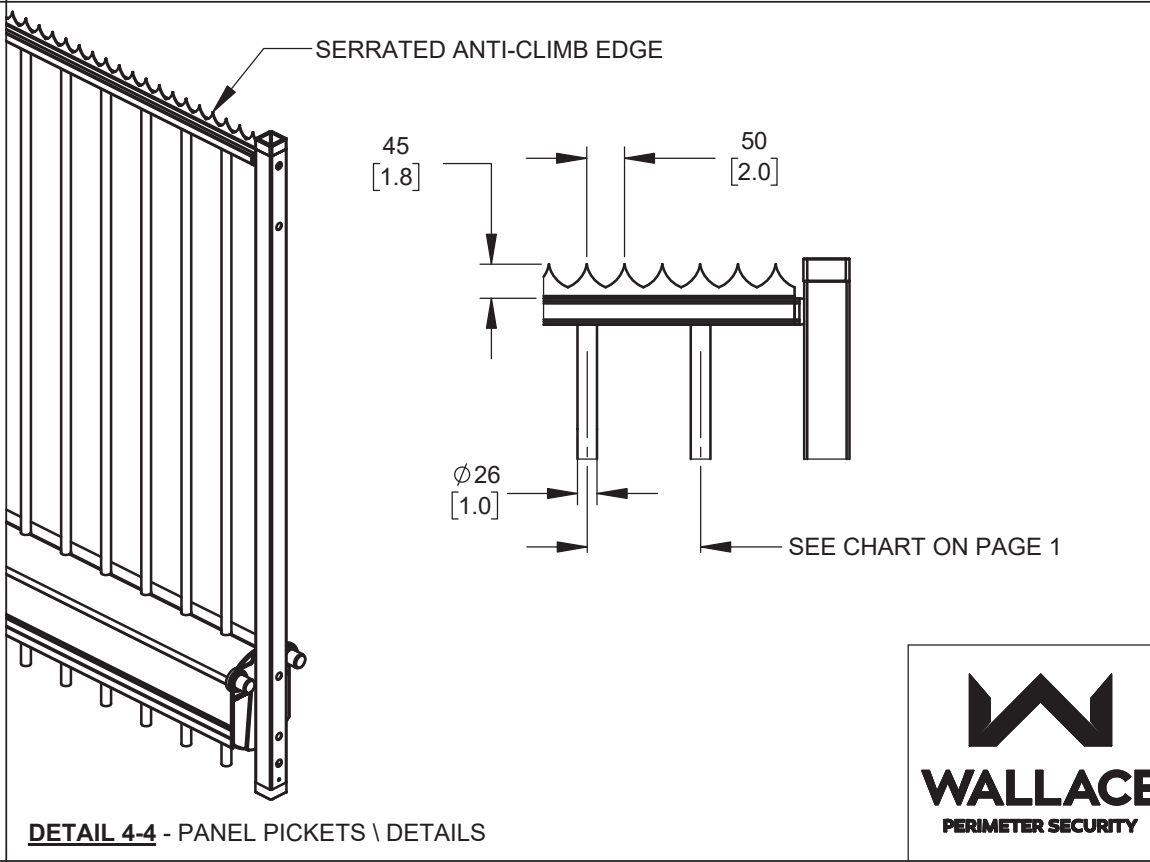
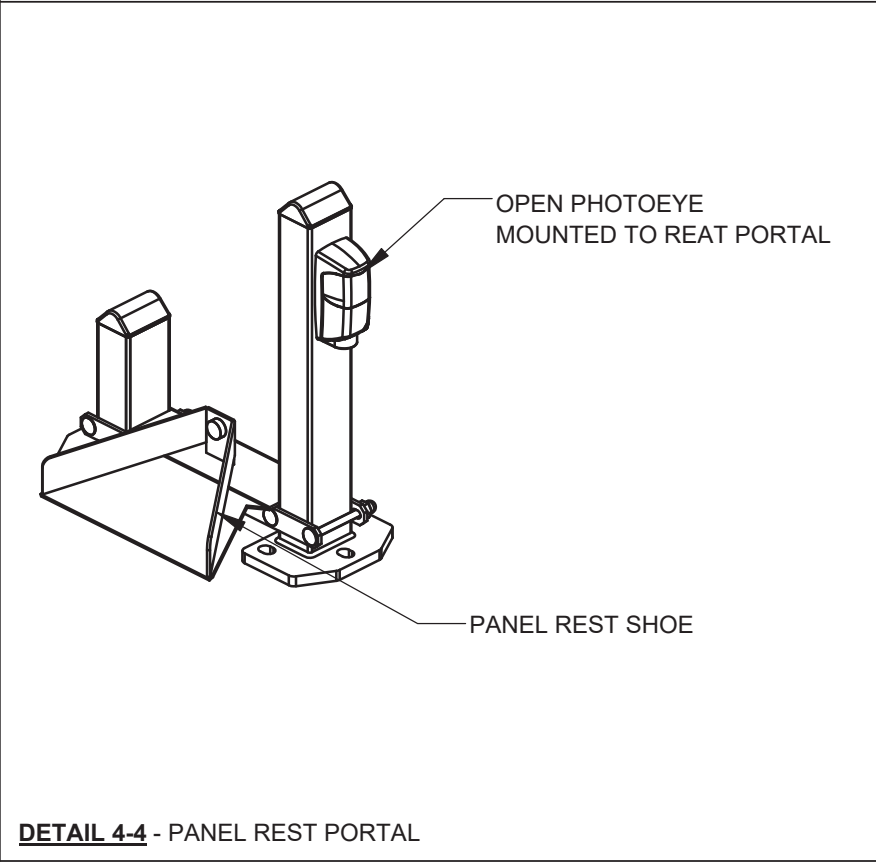
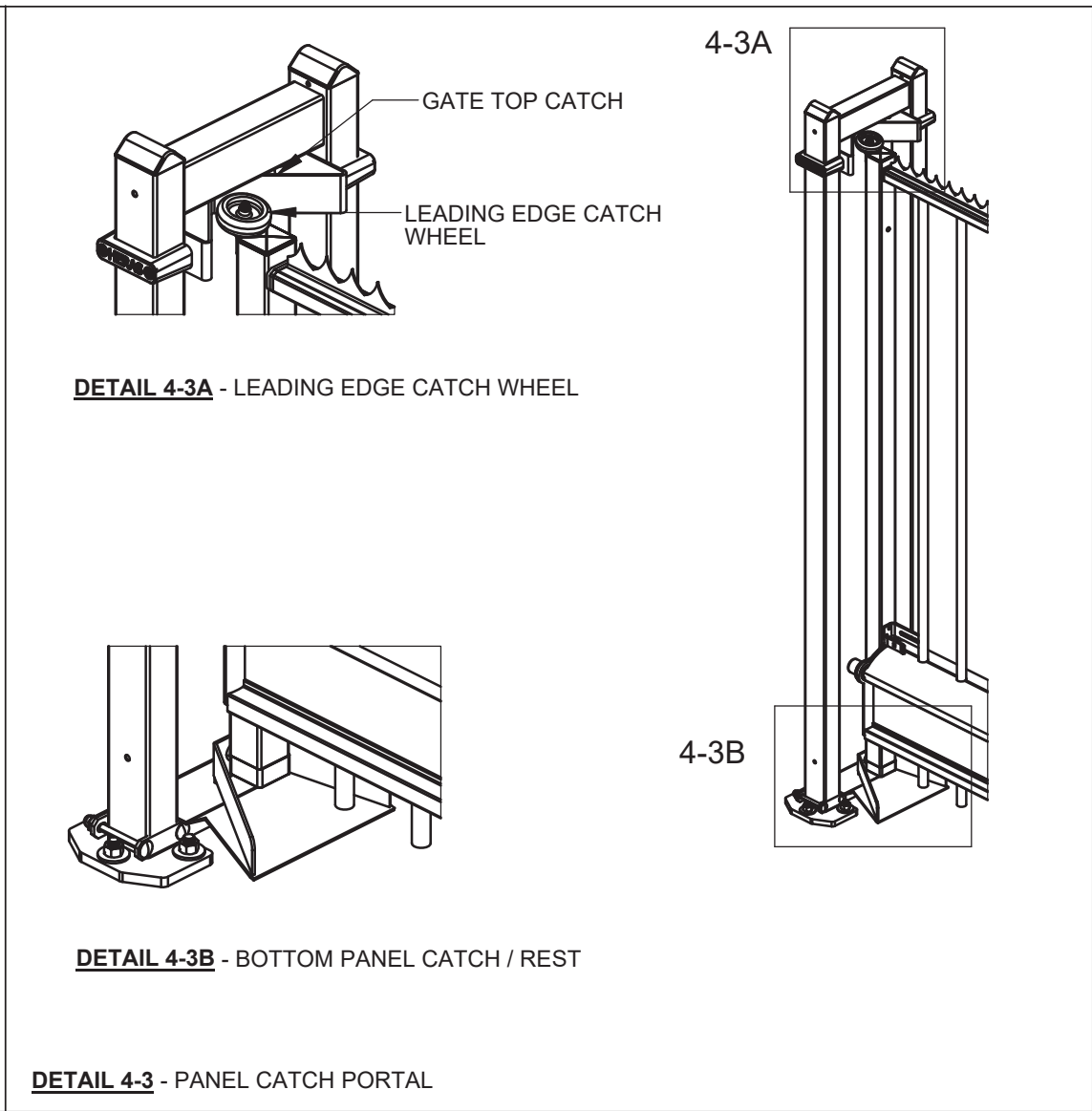
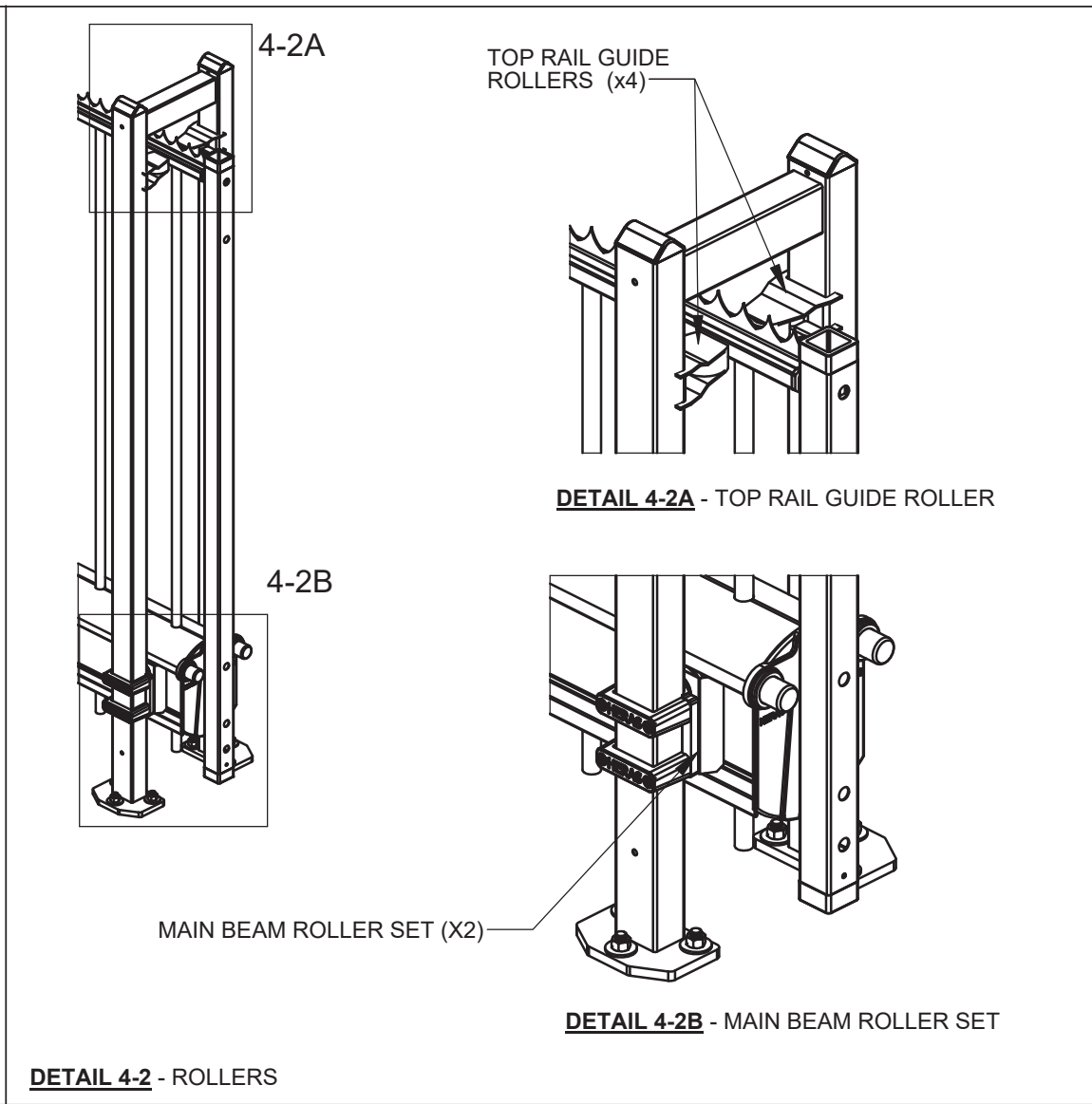
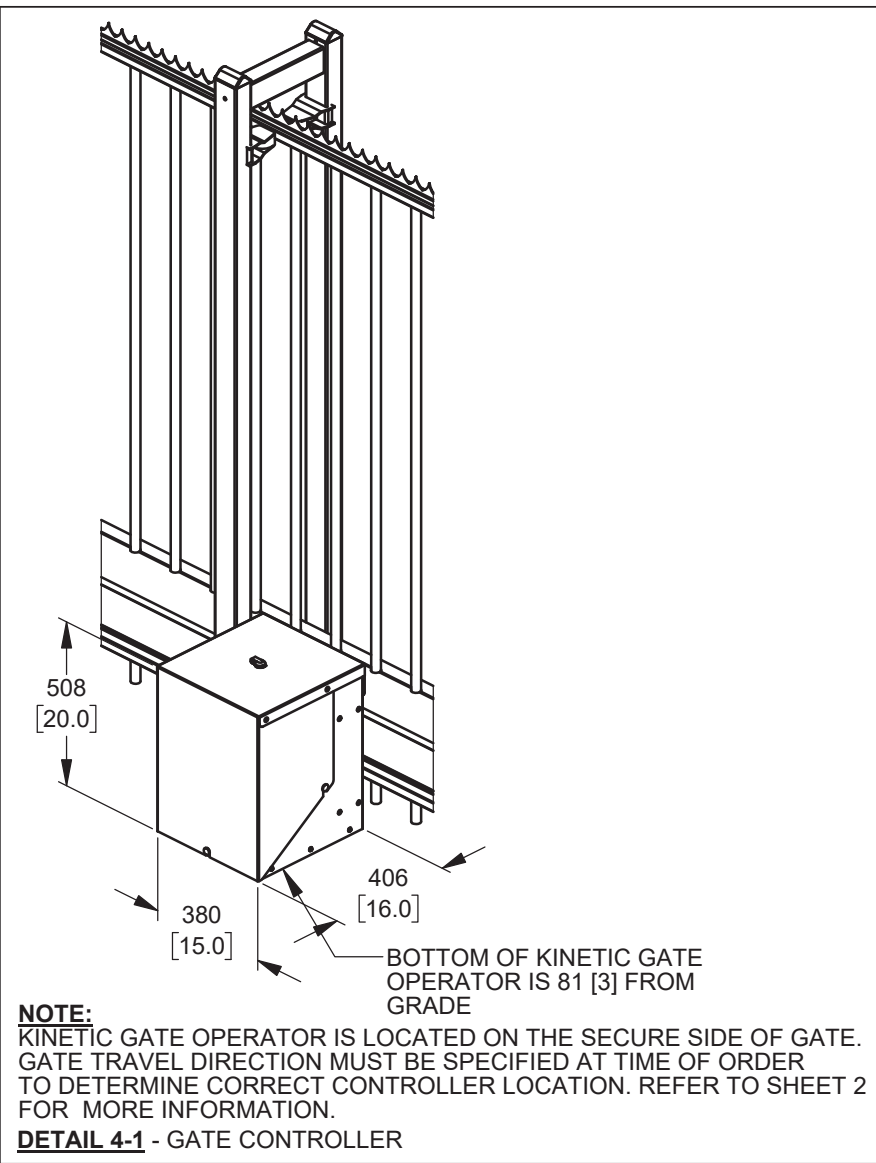
FIGURE 3-3: CONCRETE PILE
FOUNDATIONS ARE SHOWN AS A RECOMMENDED PILE TYPE ONLY.
LOCAL SOIL CONDITIONS AND TEMPERATURES WILL DICTATE THE
ACTUAL FOUNDATIONS REQUIRED.
MINIMUM RECOMMENDED PILE DEPTH IS 48.0" [1219]



115 Lowson Crescent
Winnipeg, Manitoba, Canada, R3P 1A6
Phone: 1-866-300-1110
Fax: 1-204-284-1868
Web: www.wallaceperimetersecurity.com

Product must be installed in accordance with ASTM: F-2200 & UL325

Description: DELTA CANTILEVER SLIDE GATE FOUNDATION INSTALLATION NOTES		
Customer:		
Finish:	Date: 4/27/2023	
Drawing No. DELTA-09-26-22	Rev. A	Sheet: 3 of 6

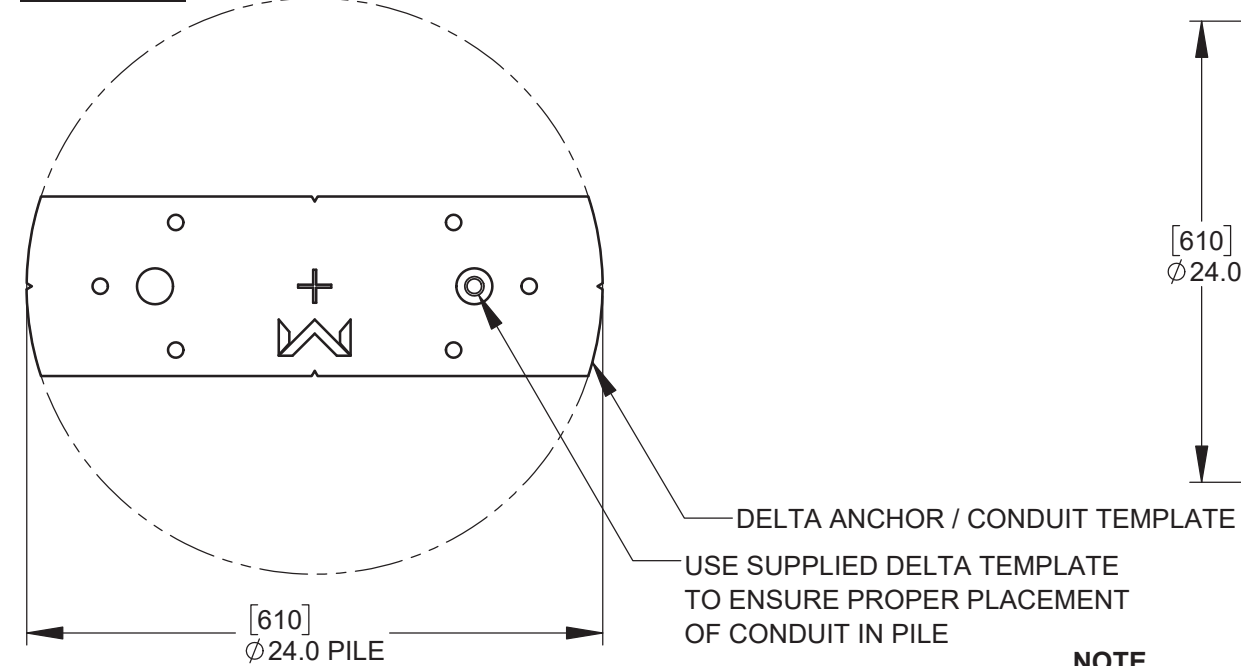


<p><u>NOTES:</u></p> <p><u>GATE FINISH:</u></p> <p>- HOT DIPPED GALVANIZED FINISH ON ALL STEEL COMPONENTS</p> <p>- ALUMINUM GATE BEAMS - CLEAR ANODIZED FINISH</p> <p><u>OPTIONAL FINISH:</u></p> <p>- POWDER COAT FINISH AVAILABLE - RAL COLOR NUMBER MUST BE PROVIDED AT TIME OF ORDER</p> <p>GATE MUST BE INSTALLED IN ACCORDANCE WITH ASTM F-2200 & UL325</p>			
<p>115 Lowson Crescent Winnipeg, Manitoba, Canada, R3P 1A6 Phone: 1-866-300-1110 Fax: 1-204-284-1868 Web: www.wallaceperimetersecurity.com</p>		Description:	
		<p>DELTA CANTILEVER GATE SYSTEM DETAILS & NOTES</p>	
		Customer:	
		Finish:	Date: 11/26/2022
Drawing No. DELTA-09-26-22		Rev. A	Sheet: 4 of 6

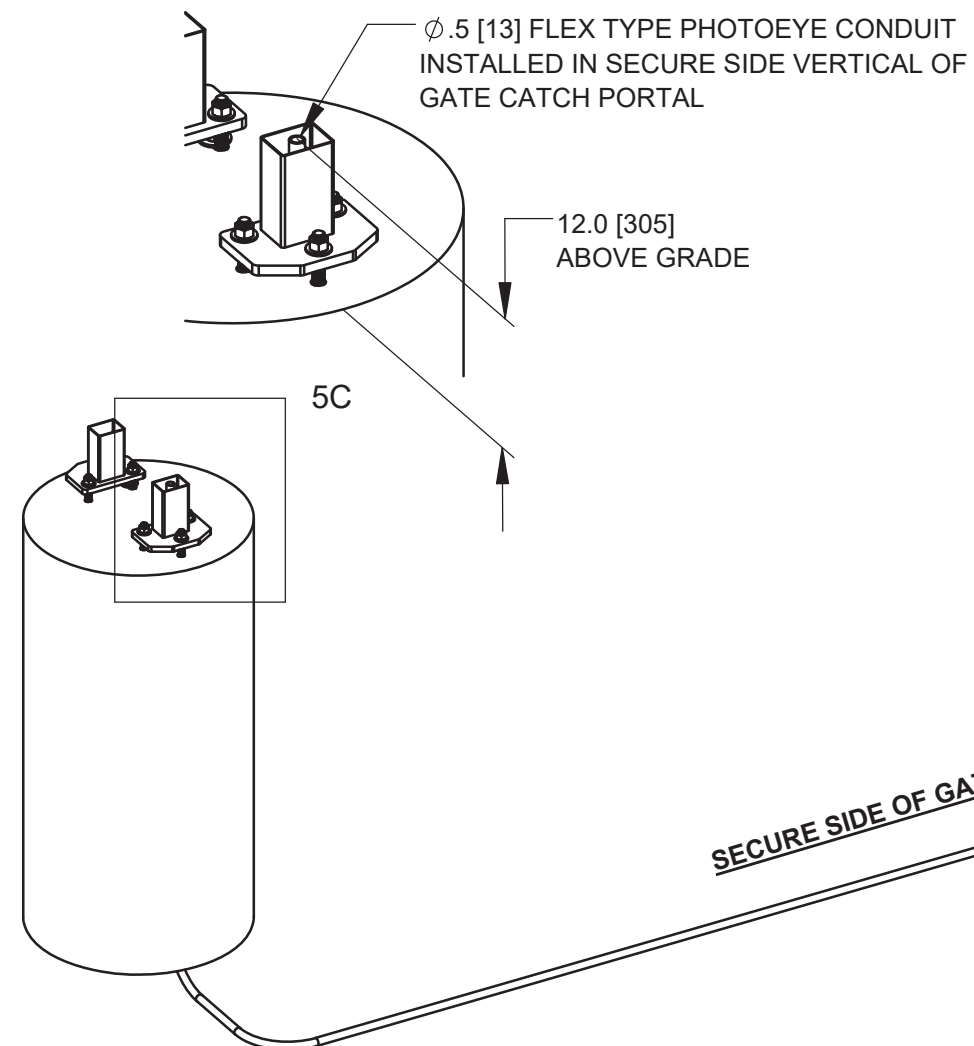


115 Lowson Crescent
Winnipeg, Manitoba, Canada, R3P 1A6
Phone: 1-866-300-1110
Fax: 1-204-284-1868
Web: www.wallaceperimetersecurity.com

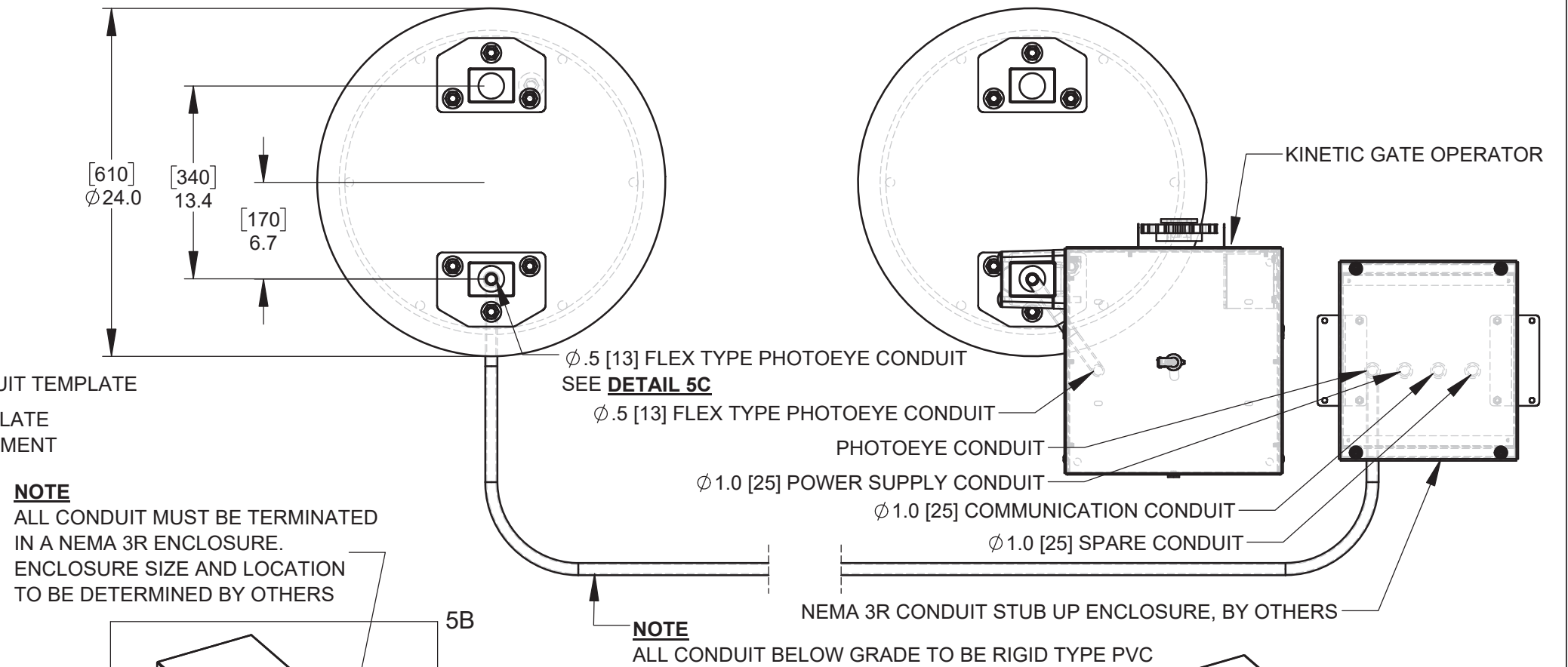
DETAIL 5D - DELTA ANCHOR / CONDUIT TEMPLATE



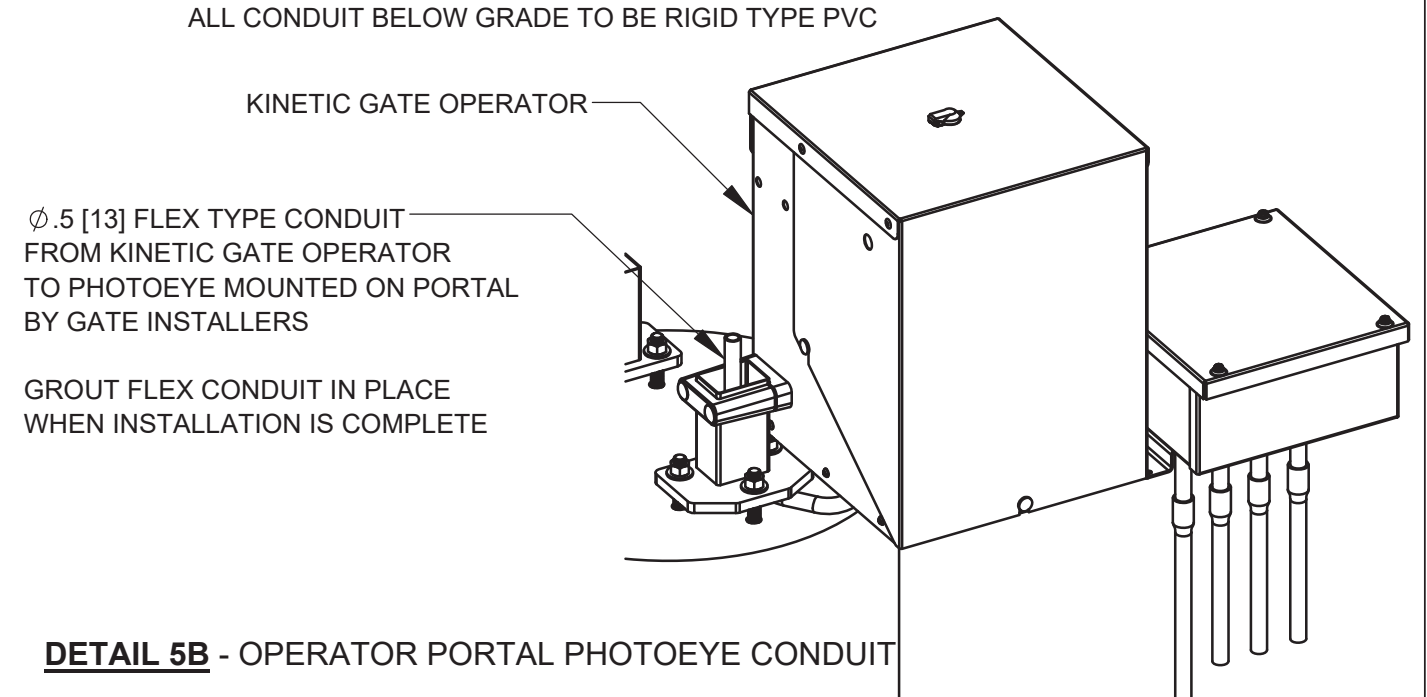
DETAIL 5C - CATCH PORTAL PHOTOEYE CONDUIT



DETAIL 5A - GENERIC CONDUIT REQUIREMENT DETAIL



DETAIL 5B - OPERATOR PORTAL PHOTOEYE CONDUIT

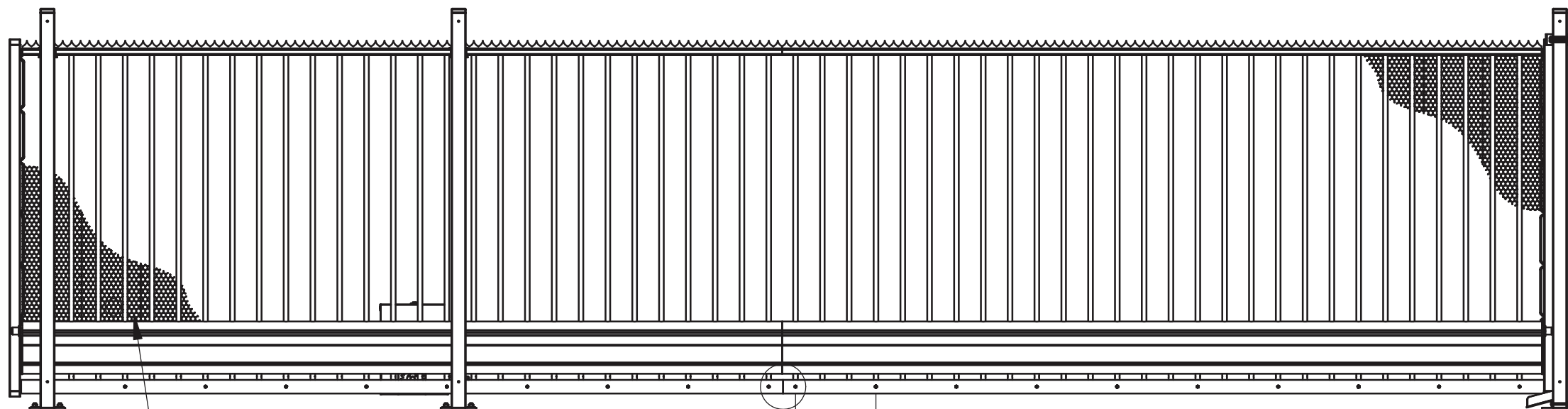


SECURE SIDE OF GATE

Description:			
<p style="text-align: center;">DELTA CANTILEVER SLIDE GATE CONDUIT DETAILS</p>			
Customer:			
Finish:			Date:
			7/8/2024
Drawing No.		Rev.	Sheet:
DELTA-02-22-24		A	5 of 6

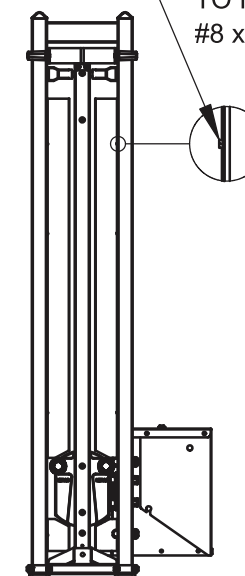


115 Lowson Crescent
Winnipeg, Manitoba, Canada, R3P 1A6
Phone: 1-866-300-1110
Fax: 1-204-284-1868
Web: www.wallaceperimetersecurity.com



20ga REVERSE TWIST PVC BLACK HEX NETTING
SECURED TO PICKETS AND END MESH RETAINERS
WITH 9ga FENCE TIES.

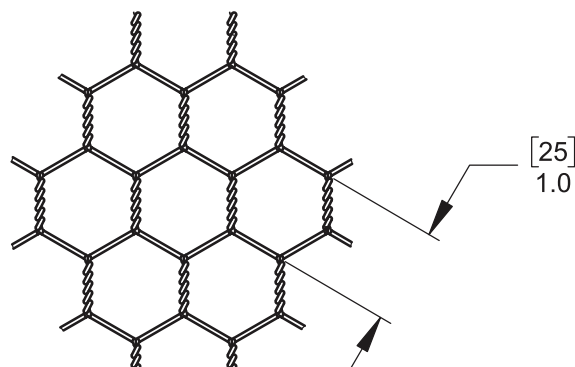
[450]
17.7



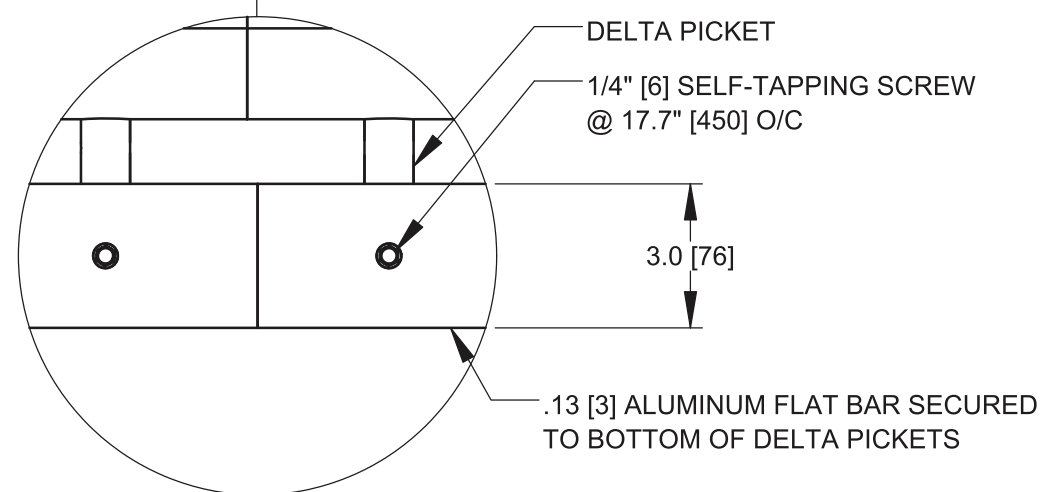
REACH THRU GUARDS ARE SECURED
TO INSIDE FACE OF PORTAL WITH
#8 x .5 SELF-TAPPING SCREWS

DETAIL C
PORTAL REACH THRU GUARDS

DETAIL A
20ga 1.0" [25] REVERSE TWIST HEX NETTING



[25]
1.0



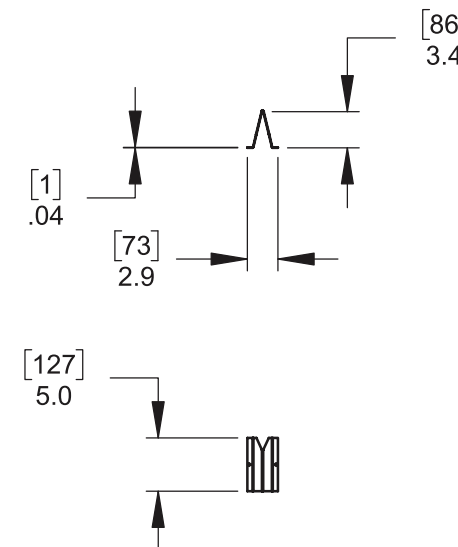
DELTA PICKET

1/4" [6] SELF-TAPPING SCREW
@ 17.7" [450] O/C

3.0 [76]

.13 [3] ALUMINUM FLAT BAR SECURED
TO BOTTOM OF DELTA PICKETS

DETAIL B
3.0 [76] x .13 [3] BOTTOM PICKET GUARD



BOTTOM

2.0 UPPER

2.5 UPPER

[86]
3.4

[1426]
56.1

[1934]
76.1

[1]
.04

[73]
2.9

[127]
5.0

Description:		
DELTA GATE UL325 KIT INSTALLATION DETAIL		
Customer:		
Finish:	Date: 11/25/2022	
Drawing No. DELTA-09-26-22	Rev. A	Sheet: 6 of 6



115 Lowson Crescent
Winnipeg, Manitoba, Canada, R3P 1A6
Phone: 1-866-300-1110
Fax: 1-204-284-1868
Web: www.wallaceperimetersecurity.com