

NOTE:
 PRODUCT MUST BE INSTALLED IN ACCORDANCE WITH ASTM: F-2200 & UL325

FINISH NOTES:
 STANDARD FINISH:
 - HOT DIPPED GALVANIZED ON ALL STEEL COMPONENTS
 - MILL FINISH ON ALL ALUMINUM COMPONENTS

OPTIONAL:
 - POWDER COAT FINISH AVAILABLE, RAL# TO BE SPECIFIED

DIMENSIONS ARE SHOWN IN INCHES, DIMENSIONS IN [] ARE IN MILLIMETERS.

Delta Model	H	A	B	C	D	U max	SP
50/50/200	78.7 [2000]	414.2 [10520]	90.6 [2300]	207.1 [5260]	393.5 [9994]	210.2 [12960]	5.55 [141]
50/50/250	98.4 [2500]						
60/60/200	78.7 [2000]	485.0 [12320]	90.6 [2300]	242.5 [6160]	464.3 [11794]	581.1 [14760]	5.55 [141]
60/60/250	98.4 [2500]						
70/70/200	78.7 [2000]	587.4 [14920]	110.2 [2800]	293.7 [7460]	566.7 [14394]	703.1 [17860]	5.63 [143]
70/70/250	98.4 [2500]						
85/85/200	78.7 [2000]	681.9 [17320]	110.2 [2800]	340.9 [8660]	661.2 [16794]	797.6 [20260]	5.63 [143]
85/85/250	98.4 [2500]						
95/95/200	78.7 [2000]	752.8 [19120]	110.2 [2800]	376.4 [9560]	732.0 [18594]	868.5 [22060]	5.55 [141]

WALLACE
 PERIMETER SECURITY

115 Lowson Crescent
 Winnipeg, Manitoba, Canada, R3P 1A6
 Phone: 1-866-300-1110
 Fax: 1-204-284-1868
 Web: www.wallaceperimetersecurity.com

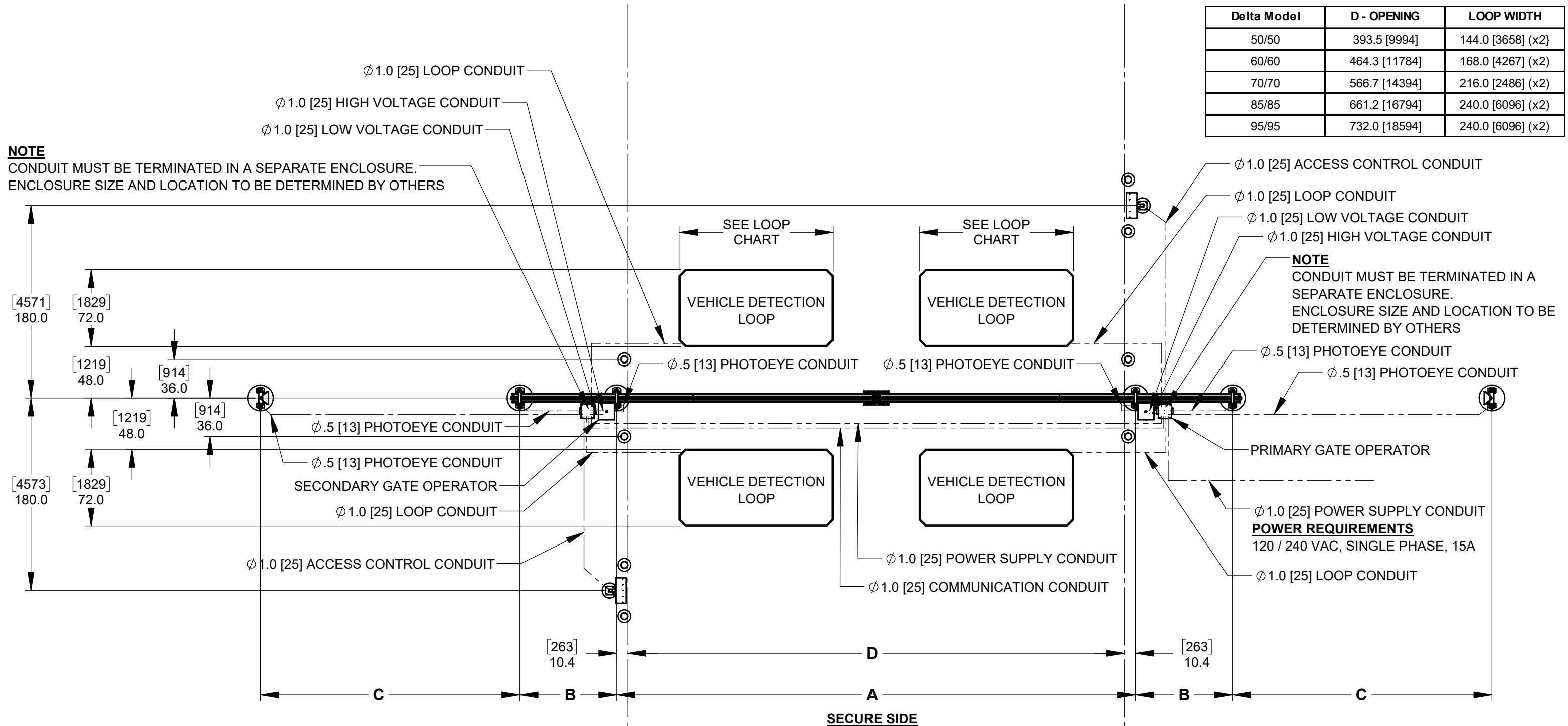
Description: DOUBLE DELTA CANTILEVER SLIDE GATE		
Customer:		
Finish: SEE FINISH NOTES	Date: 7/17/2024	
Drawing No. DELTA-DBL-03-04-24	Rev.	Sheet: 1 of 6

LOOP CHART

Delta Model	D - OPENING	LOOP WIDTH
50/50	393.5 [9994]	144.0 [3658] (x2)
60/60	464.3 [11784]	168.0 [4267] (x2)
70/70	566.7 [14394]	216.0 [2486] (x2)
85/85	661.2 [16794]	240.0 [6096] (x2)
95/95	732.0 [18594]	240.0 [6096] (x2)

NOTE

CONDUIT MUST BE TERMINATED IN A SEPARATE ENCLOSURE.
ENCLOSURE SIZE AND LOCATION TO BE DETERMINED BY OTHERS



NOTE

CONDUIT MUST BE TERMINATED IN A SEPARATE ENCLOSURE.
ENCLOSURE SIZE AND LOCATION TO BE DETERMINED BY OTHERS

NOTES:

- OPTIONAL ACCESS CONTROL HARDWARE, VEHICLE DETECTION LOOP AND BOLLARD LOCATIONS ARE SUPPLIED AS A REFERENCE ONLY.
- ALL FINAL MATERIALS AND LOCATIONS ARE SUPPLIED AND INSTALLED BY OTHERS UNLESS OTHERWISE SPECIFIED AT TIME OF ORDER.
- PRIMARY OPERATOR LOCATION MUST BE SPECIFIED FOR CORRECT PLACEMENT OF CONDIT.
- SEE SHEET 3 FOR GENERIC FOUNDATION SIZING, INSTALLATION AND LEVELING NOTES.

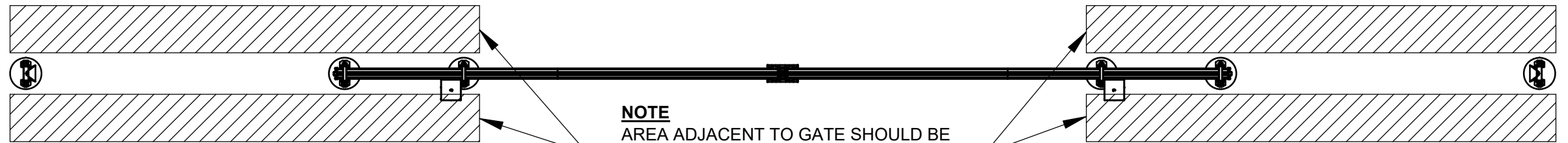
PRODUCT MUST BE INSTALLED IN ACCORDANCE WITH ASTM: F-2200 & UL325

Description:
DOUBLE DELTA CANTILEVER SLIDE GATE
GENERIC SITE LAYOUT / CONDUIT REQUIREMENTS

Customer:
Finish:
Date: 7/17/2024
Drawing No. **DELTA-DBL-03-04-24**
Rev.
Sheet: 2 of 6



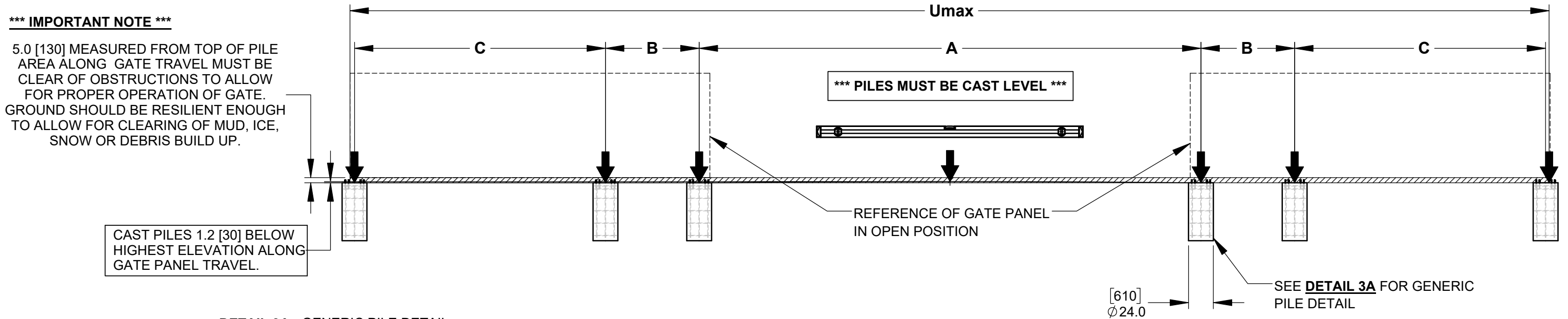
115 Lawson Crescent
Winnipeg, Manitoba, Canada, R3P 1A6
Phone: 1-866-300-1110
Fax: 1-204-284-1868
Web: www.wallaceperimetersecurity.com



NOTE
 AREA ADJACENT TO GATE SHOULD BE CLEAR OF OBSTRUCTIONS ALLOWING FOR REMOVAL OF ANY MUD, ICE, SNOW OR DEBRIS THAT MAY OCCUR

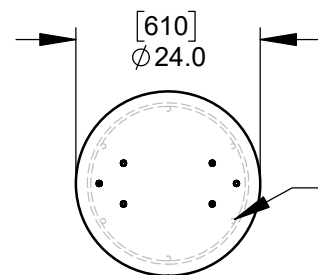
***** IMPORTANT NOTE *****

5.0 [130] MEASURED FROM TOP OF PILE AREA ALONG GATE TRAVEL MUST BE CLEAR OF OBSTRUCTIONS TO ALLOW FOR PROPER OPERATION OF GATE. GROUND SHOULD BE RESILIENT ENOUGH TO ALLOW FOR CLEARING OF MUD, ICE, SNOW OR DEBRIS BUILD UP.



CAST PILES 1.2 [30] BELOW HIGHEST ELEVATION ALONG GATE PANEL TRAVEL.

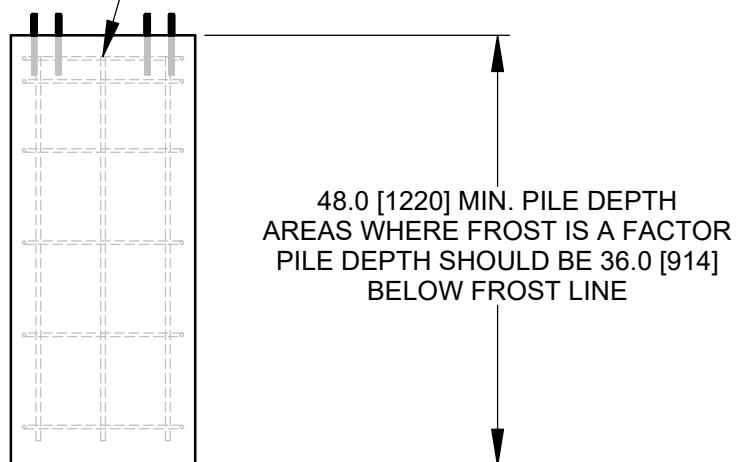
DETAIL 3A - GENERIC PILE DETAIL



NOTE
 PILE DESIGN IS SHOWN AS A RECOMMENDED PILE TYPE ONLY. LOCAL SOIL CONDITIONS AND TEMPERATURES WILL DICTATE ACTUAL FOUNDATION DESIGN. MINIMUM PILE DEPTH 48.0 [1219]

6 - 15M REBAR VERTICALS

10M REBAR RINGS @ 12.0 [305] O/C
 DOUBLE RINGS AT TOP @ 3.0 [76] O/C



48.0 [1220] MIN. PILE DEPTH
 AREAS WHERE FROST IS A FACTOR
 PILE DEPTH SHOULD BE 36.0 [914]
 BELOW FROST LINE

Description:		DOUBLE DELTA CANTILEVER SLIDE GATE FOUNDATION INSTALLATION NOTES	
Customer:			
Finish:		Date:	7/17/2024
Drawing No.	DELTA-DBL-03-04-24	Rev.	
		Sheet:	3 of 6

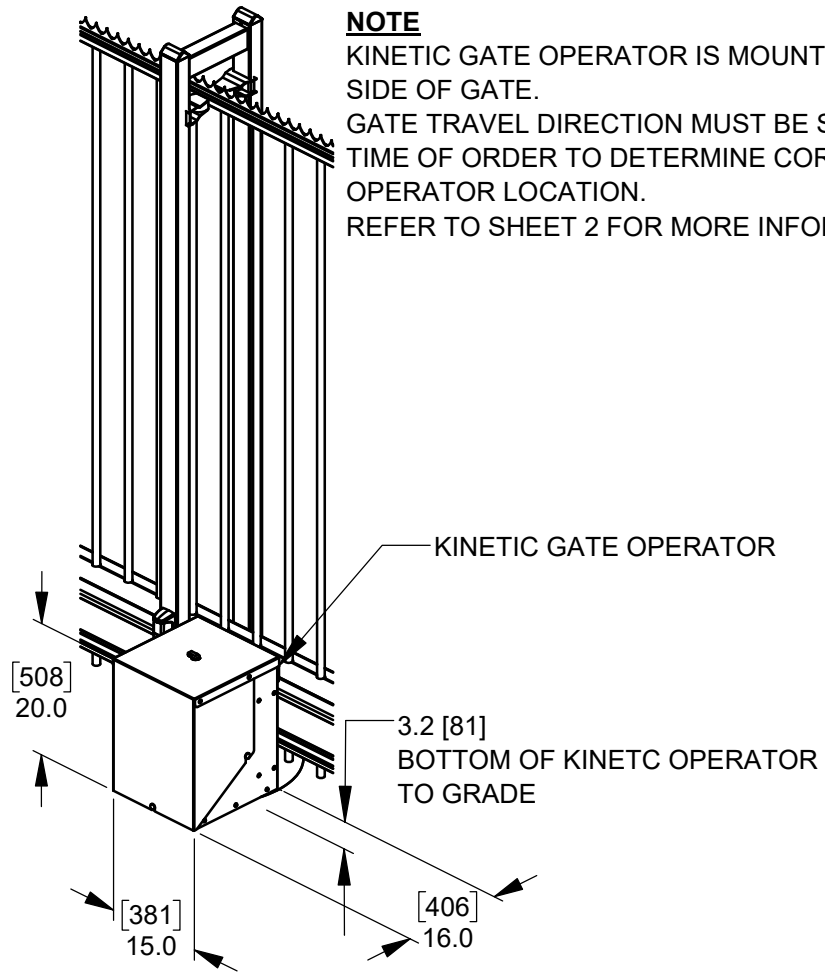
WALLACE
 PERIMETER SECURITY

115 Lowson Crescent
 Winnipeg, Manitoba, Canada, R3P 1A6
 Phone: 1-866-300-1110
 Fax: 1-204-284-1868
 Web: www.wallaceperimetersecurity.com

DETAIL 4A - KINETIC GATE OPERATOR

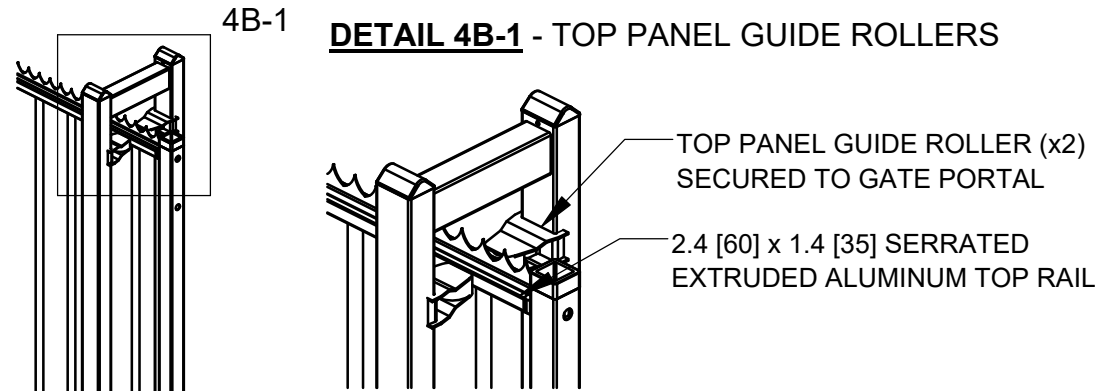
NOTE

KINETIC GATE OPERATOR IS MOUNTED ON SECURE SIDE OF GATE.
GATE TRAVEL DIRECTION MUST BE SPECIFIED AT TIME OF ORDER TO DETERMINE CORRECT OPERATOR LOCATION.
REFER TO SHEET 2 FOR MORE INFORMATION.

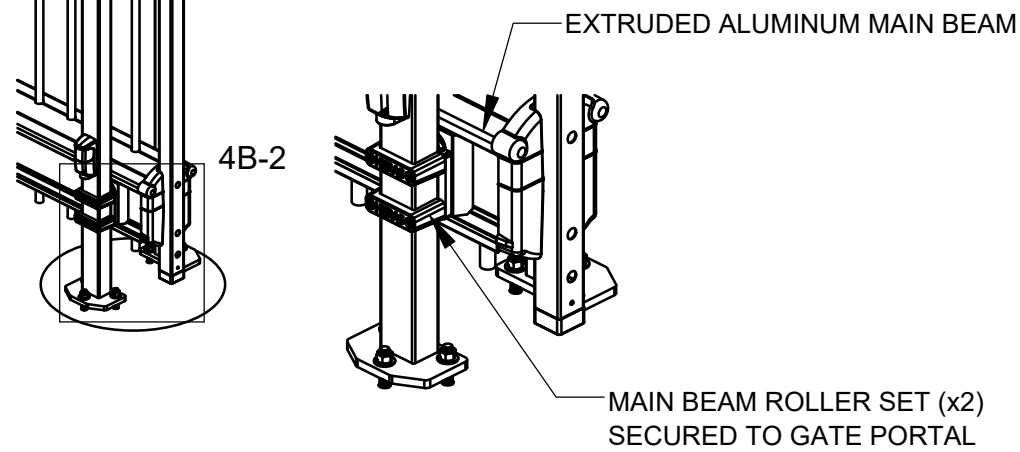


DETAIL 4B - PANEL MAIN ROLLER / TOP GUIDE ROLLER DETAILS

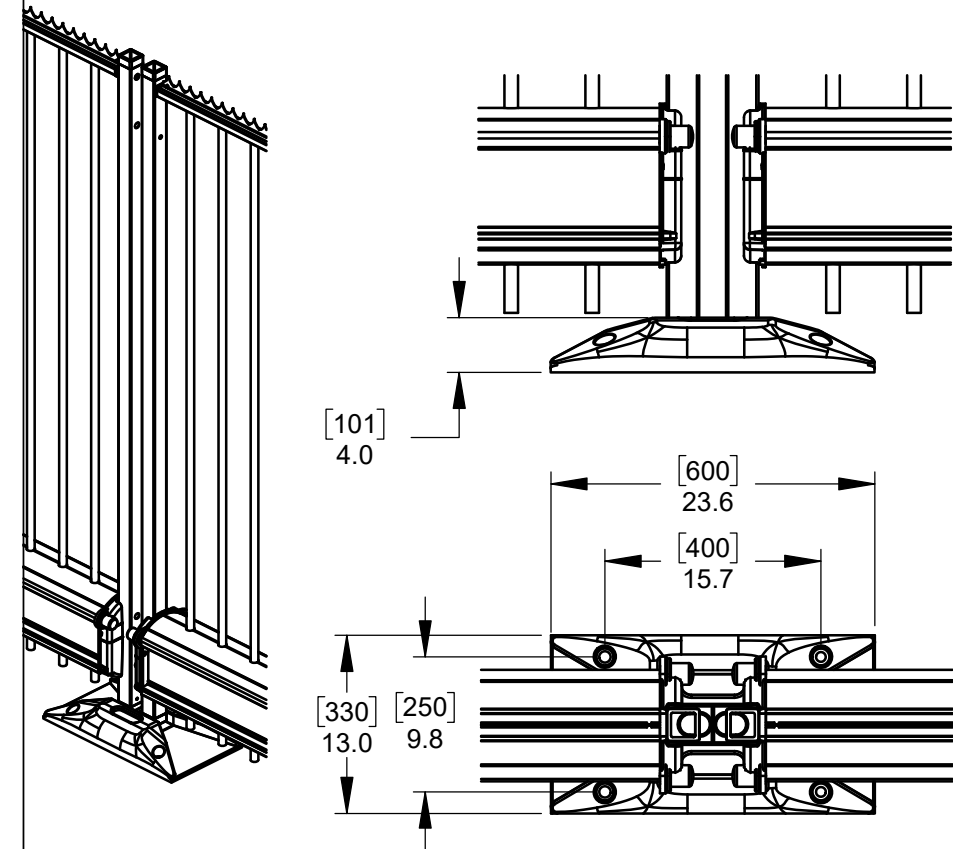
DETAIL 4B-1 - TOP PANEL GUIDE ROLLERS



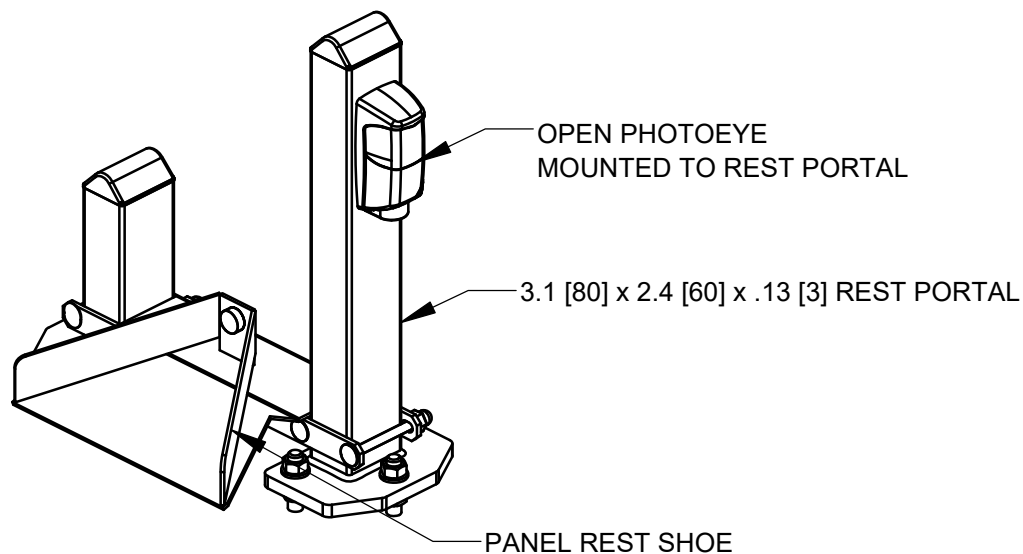
DETAIL 4B-2 - MAIN BEAM ROLLER



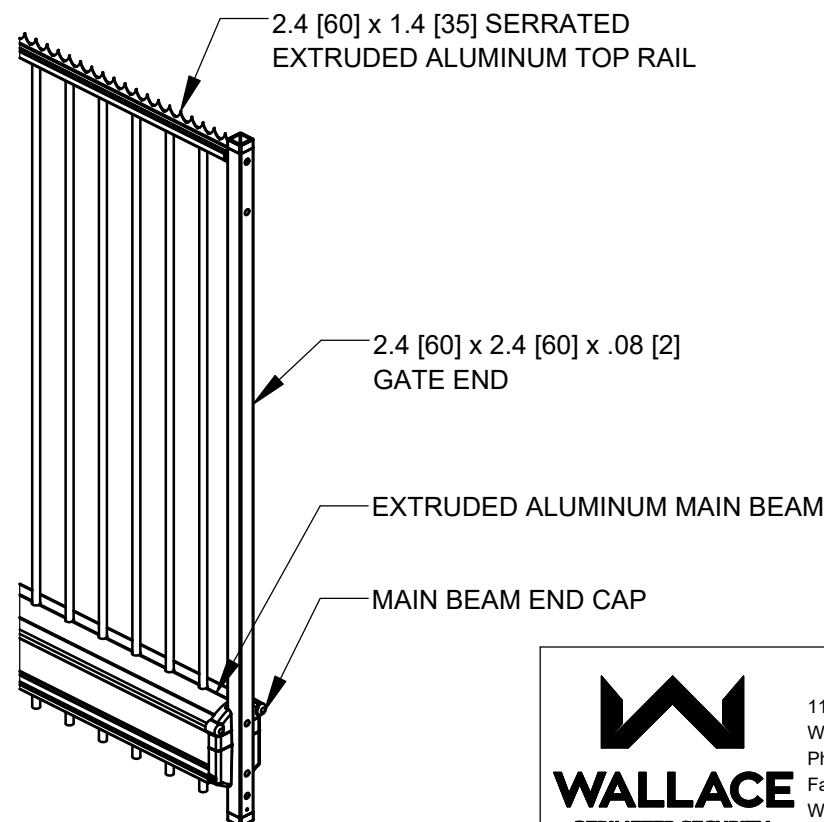
DETAIL 4C - CENTER CATCH SHOE



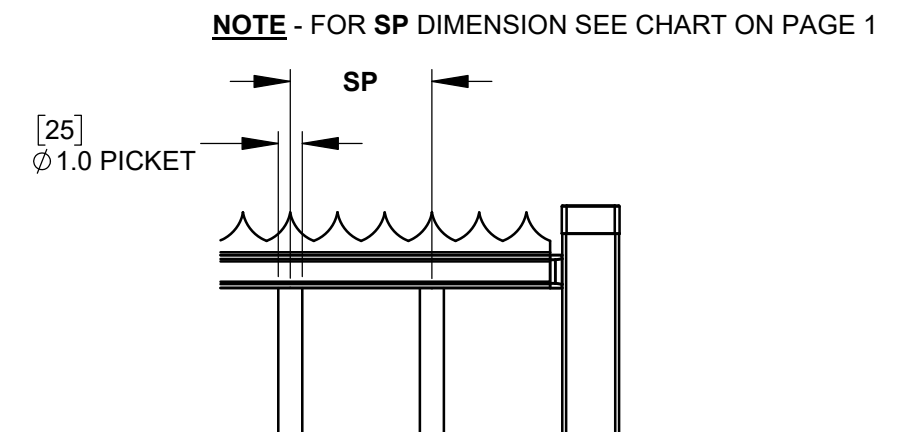
DETAIL 4D - GATE REST PORTAL



DETAIL 4E - PANEL / PICKET DETAILS



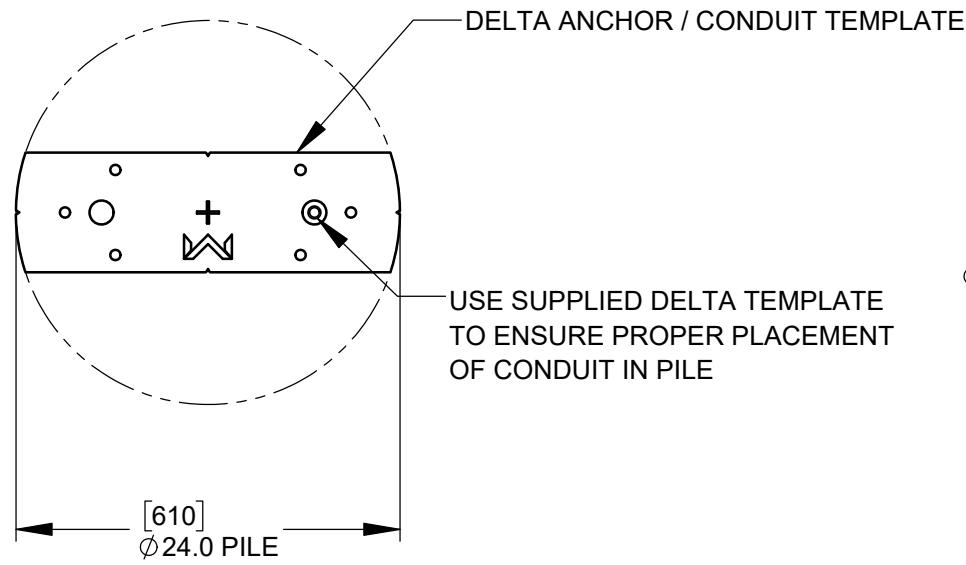
DETAIL 4E-1 - PICKETS



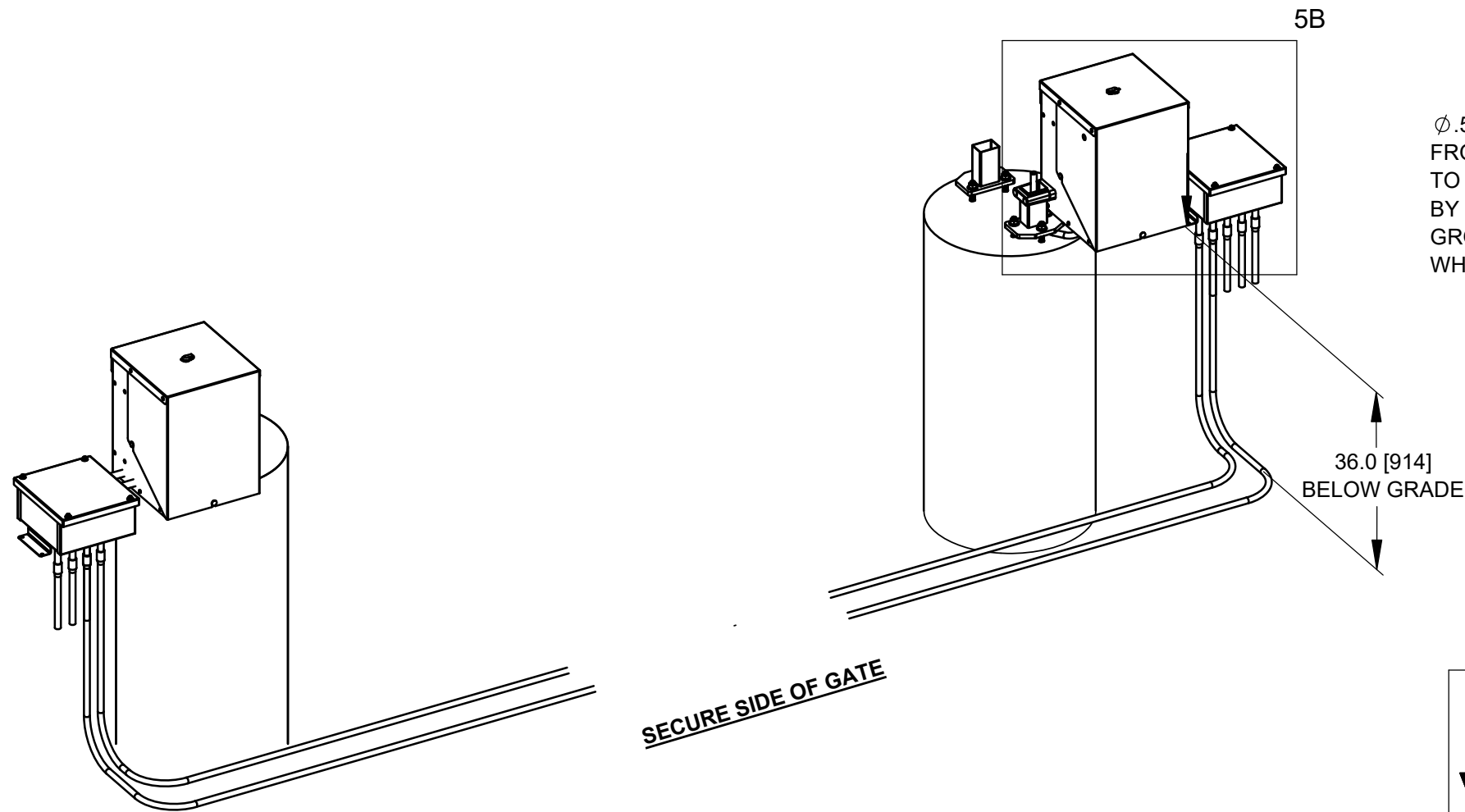
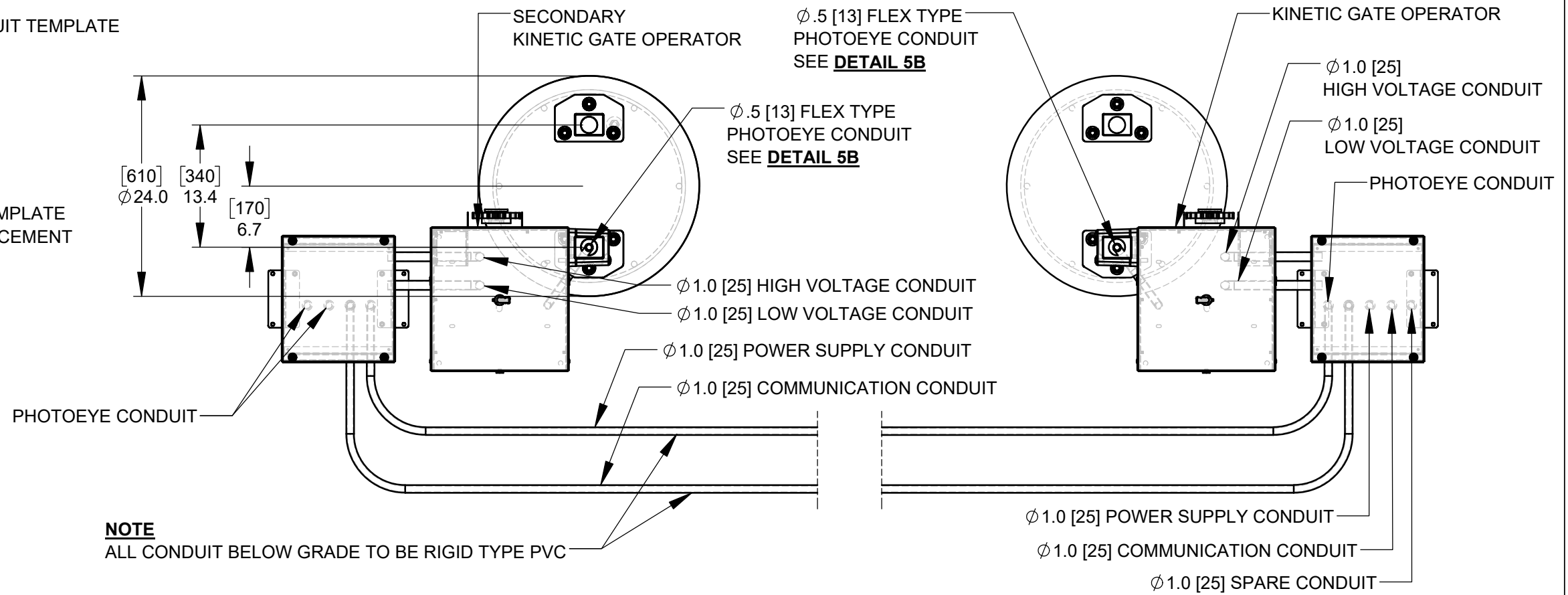
115 Lowson Crescent
Winnipeg, Manitoba, Canada, R3P 1A6
Phone: 1-866-300-1110
Fax: 1-204-284-1868
Web: www.wallaceperimetersecurity.com

Description:		DOUBLE DELTA CANTILEVER SLIDE GATE DETAILS	
Customer:			
Finish:		Date:	7/17/2024
Drawing No.	Rev.	Sheet:	4 of 6
DELTA-DBL-03-04-24			

DETAIL 5D - DELTA ANCHOR / CONDUIT TEMPLATE

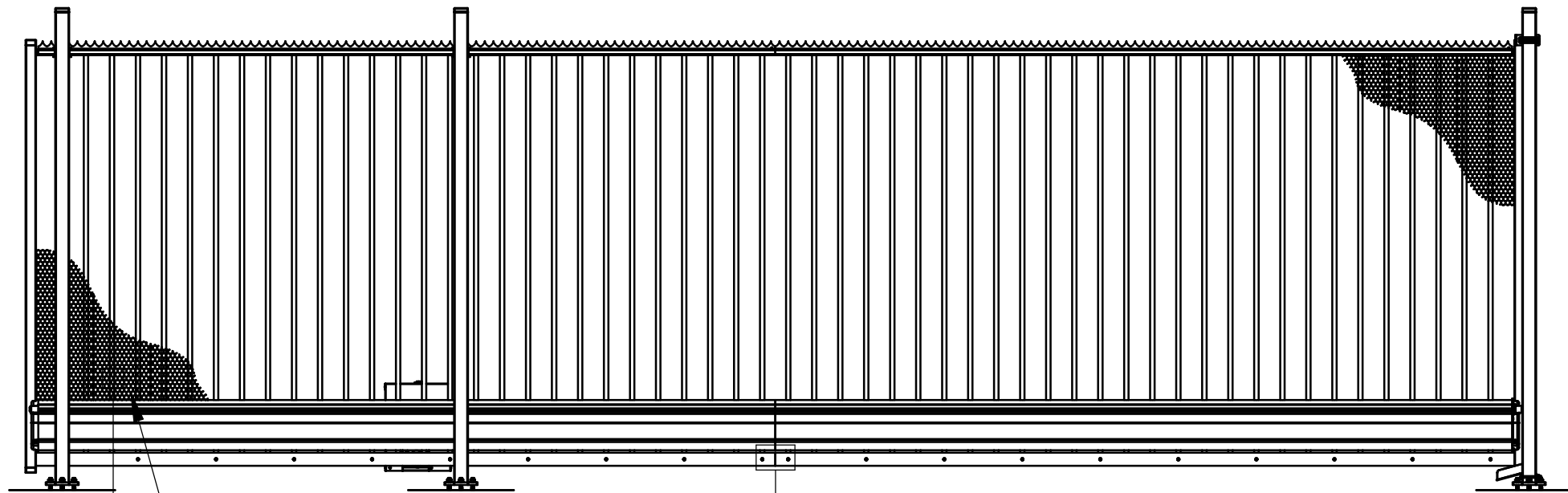


DETAIL 5A - GENERIC CONDUIT REQUIREMENT DETAIL

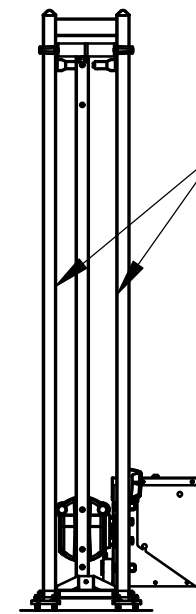


DETAIL 5B - OPERATOR PORTAL PHOTOEYE CONDUIT

Description:		DOUBLE DELTA CANTILEVER SLIDE GATE CONDUIT DETAILS	
Customer:			
Finish:		Date:	7/17/2024
Drawing No.	DELTA-DBL-03-04-24	Rev.	
		Sheet:	5 of 6

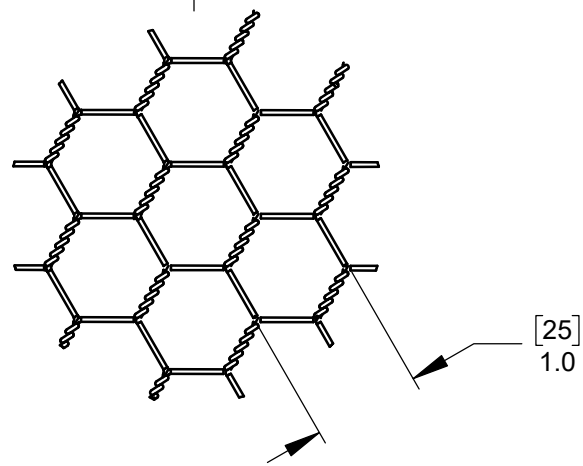


20ga REVERSE TWIST PVC BLACK HEX NETTING
SECURED TO PICKETS AND END MESH RETAINERS
WITH 9ga FENCE TIES



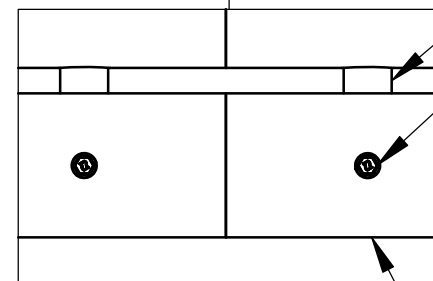
REACH THRU GUARDS ARE
SECURED TO INSIDE FACES
OF PORTAL WITH # 8 x .5 [13]
SELF-TAPPING SCREWS

DETAIL UL3 - PORTAL REACH THRU GUARDS



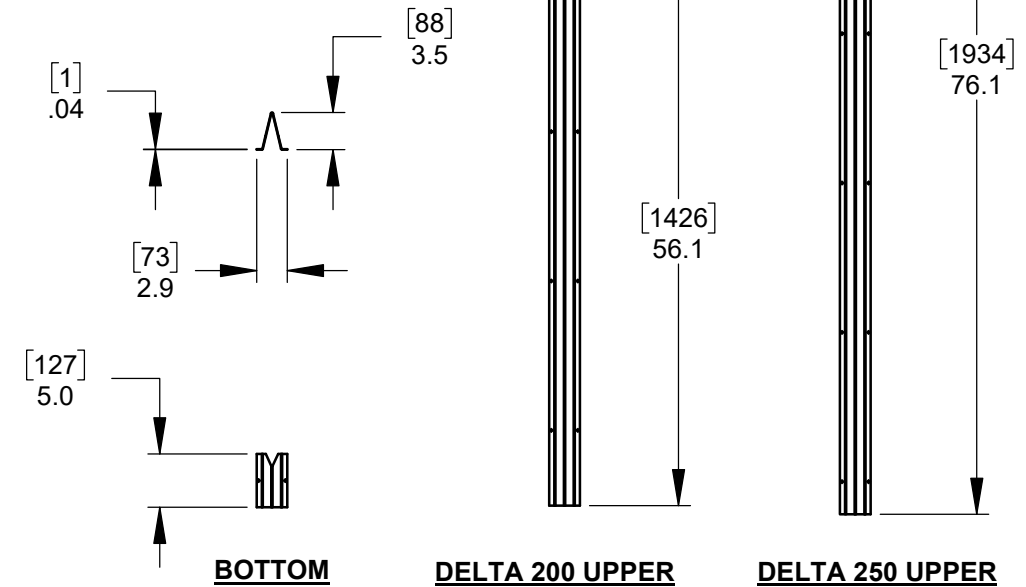
[25]
1.0

DETAIL UL2 - 20ga. [1.0 [25] REVERSE TWIST HEX NETTING



Ø 1.0 [25] DELTA PICKET
1/4" [6] SELF-TAPPING SCREW
@17.7 [450] O/C
3.0 [76] x .13 [3] ALUMINUM FLAT BAR
BOTTOM PICKET GUARD

DETAIL UL1 - 3.0 [76] x .13 [3] BOTTOM PICKET GUARD



Description:		DOUBLE DELTA CANTILEVER SLIDE GATE UL325 KIT INSTALLATION DETAILS	
Customer:			
Finish:		Date:	7/17/2024
Drawing No.	DELTA-DBL-03-04-24	Rev.	Sheet: 6 of 6

WALLACE
PERIMETER SECURITY

115 Lawson Crescent
Winnipeg, Manitoba, Canada, R3P 1A6
Phone: 1-866-300-1110
Fax: 1-204-284-1868
Web: www.wallaceperimetersecurity.com