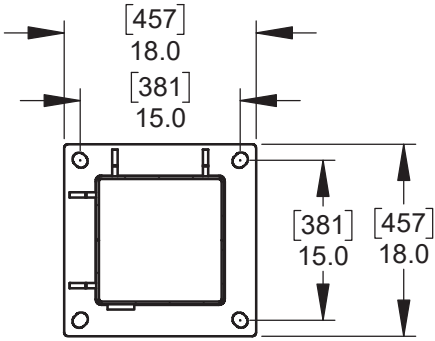
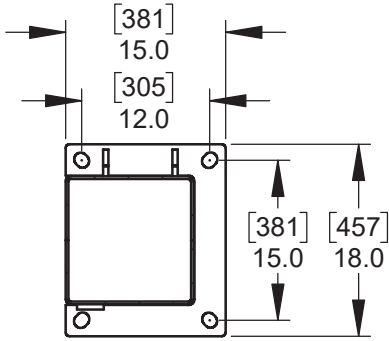


SECTION B-B - BASE PLATE OPTIONS

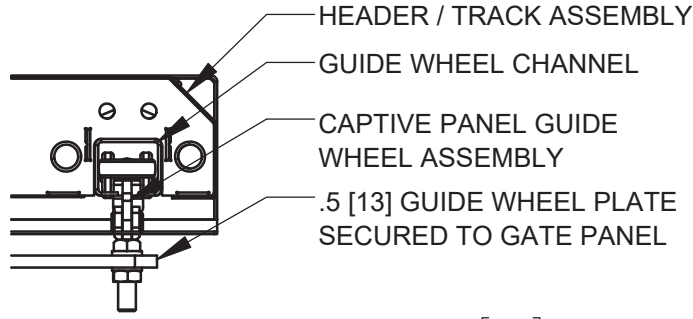
B1 - STANDARD



B2 - OFFSET



DETAIL A

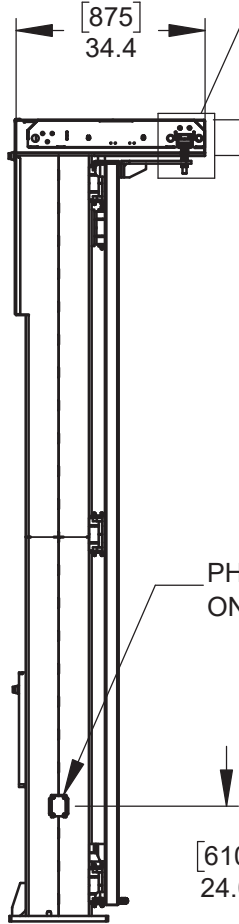


SECTION A-A



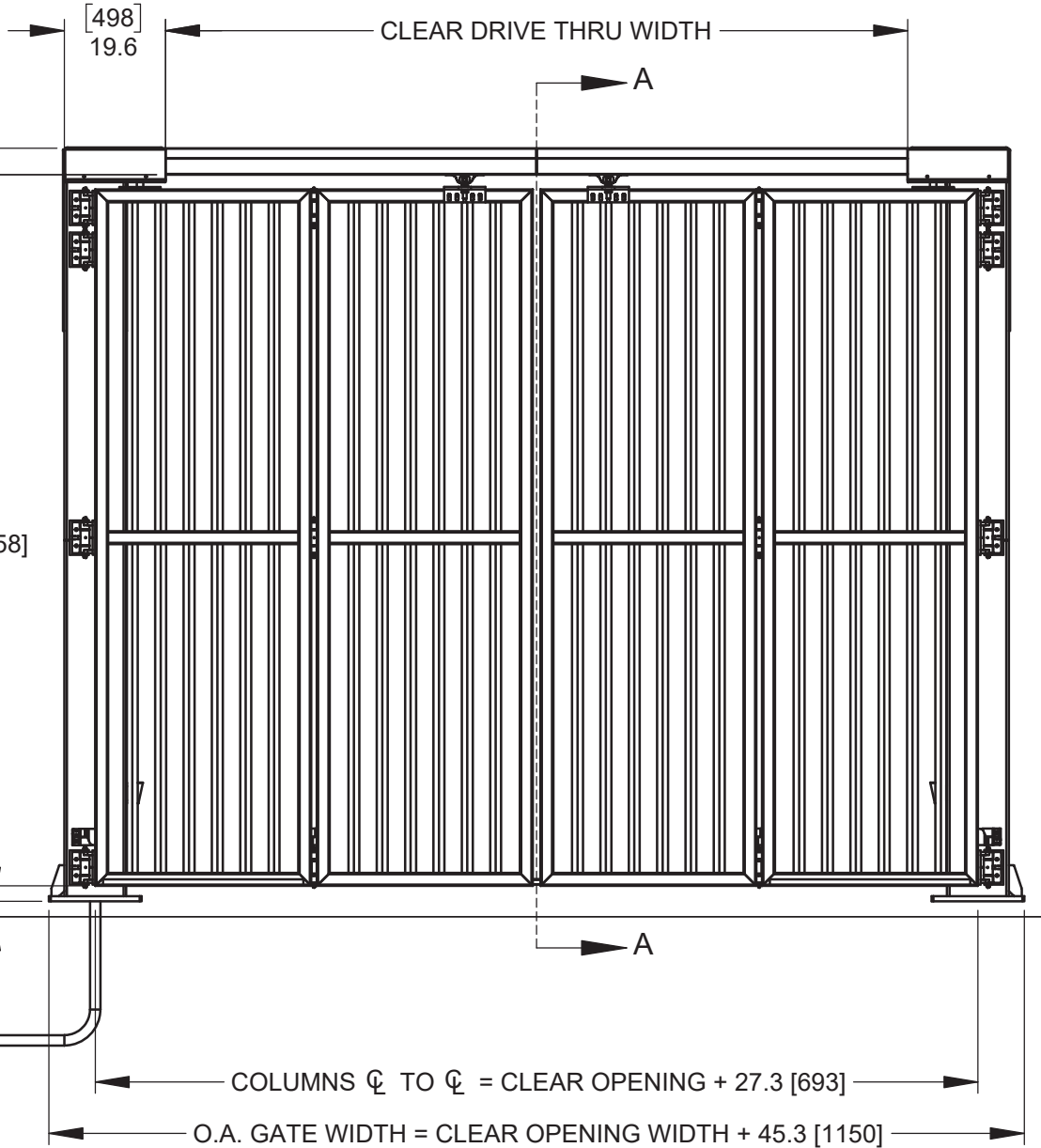
MANUAL OPERATION
ACCESS POINT IS LOCATED
INSIDE LOWER ACCESS DOOR

ELECTRICAL TERMINATION BOX IS
LOCATED INSIDE PRIMARY COLUMN.
THE PRIMARY COLUMN IS THE COLUMN
THAT IS LOCATED CLOSEST TO THE
CONTROL ENCLOSURE



PHOTOEYES ARE LOCATED
ON INSIDE FACE OF COLUMN

CLEAR DRIVE THRU HT. +0
-2.3 [58]



12.0 [305] x 12.0 [305] x .25 [6] COLUMN
REFER TO SECTION B-B ABOVE FOR OPTIONS

2 ELECTRICAL CONTROLLERS ARE MOUNTED IN A 30" [762] x 30" [762] x 12" [305]
NEMA 3R ENCLOSURE, c/w WIRING HARNESS.
STANDARD HARNESS LENGTH ALLOWS FOR CONTROLLER ENCLOSURE TO BE
PLACED UP TO 30' [9144] FROM PRIMARY COMLUMN.
OPTIONAL EXTENDED WIRE HARNESS IS AVAILABLE WHERE CONTROLLERS
ARE TO BE MOUNTED BEYOND STANDARD WIRE HARNESS LENGTH.
MAXIMUM WIRE HARNESS LENGTH IS DETERMINED BY CLEAR OPENING WIDTH.
CONTACT WALLACE PERIMETER SECURITY FOR DETAILS.
CONTROLLER ENCLOSURE AND HARNESS BY WPS. CONDUIT, BY OTHERS
POWER REQUIREMENTS: 208 / 240V, SINGLE PHASE, 15 AMP

NOTE

GATE IS PREPARED FOR FIELD INSTALLATION OF SENSING EDGES PER UL UPDATE

DIMENSIONS ARE SHOWN IN INCHES, DIMENSIONS IN [] ARE SHOWN IN MILLIMETERS

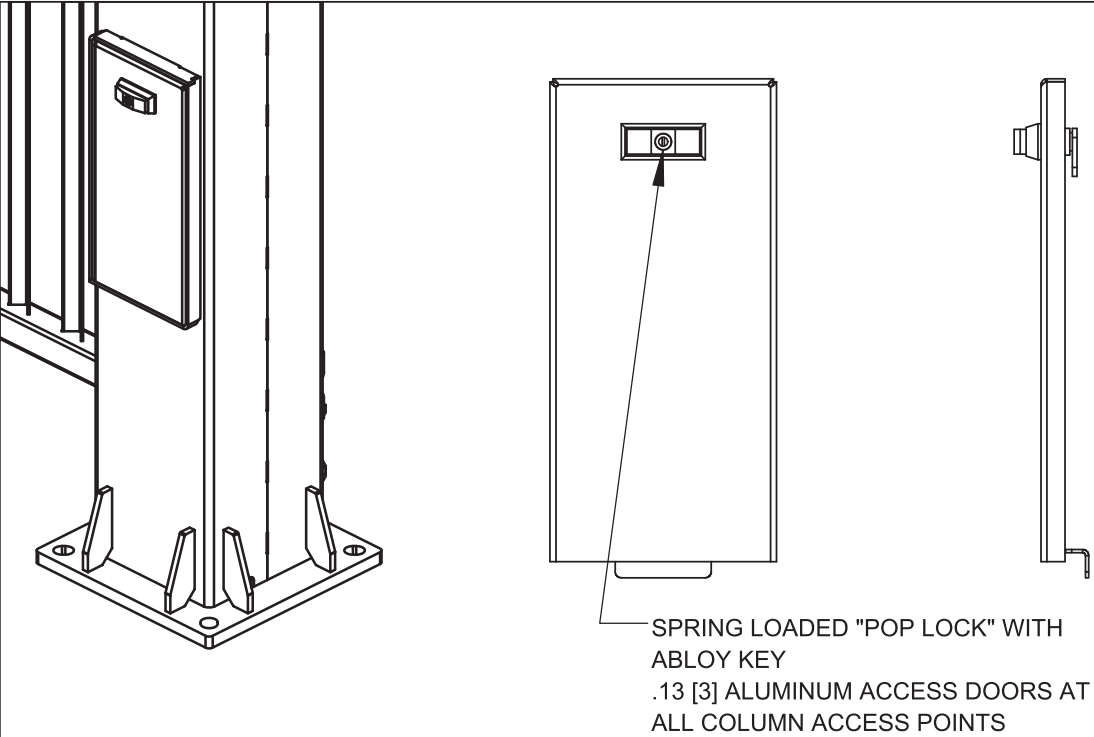
FINISH NOTES:

- STANDARD FINISH: NOT DIPPED GALVANIZED
- OPTIONAL FINISH: POWDER COAT PAINT, CUSTOM COLORS AVAILABLE
RAL # MUST BE SPECIFIED AT TIME OF ORDER.

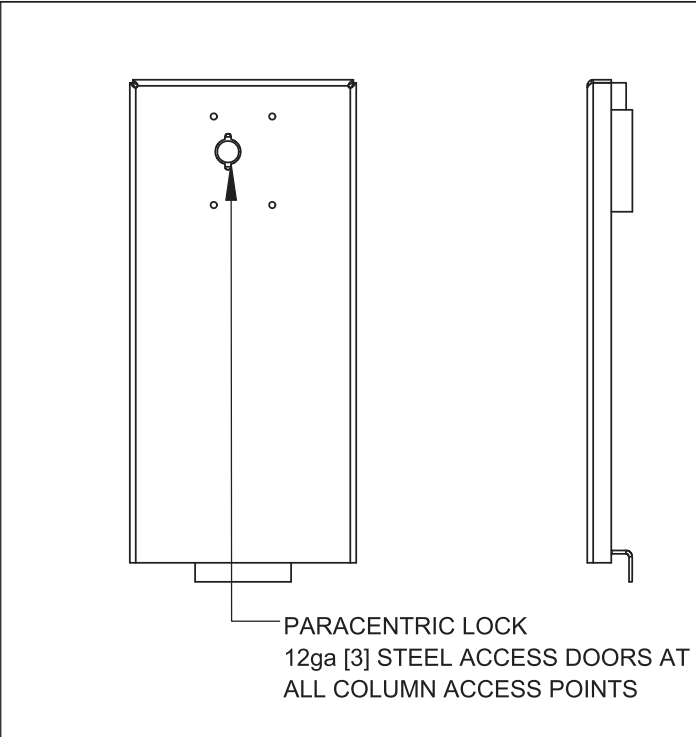


115 Lowson Crescent
Winnipeg, Manitoba, Canada, R3P 1A6
Phone: 1-866-300-1110
Fax: 1-204-284-1868
Web: www.wallaceperimetersecurity.com

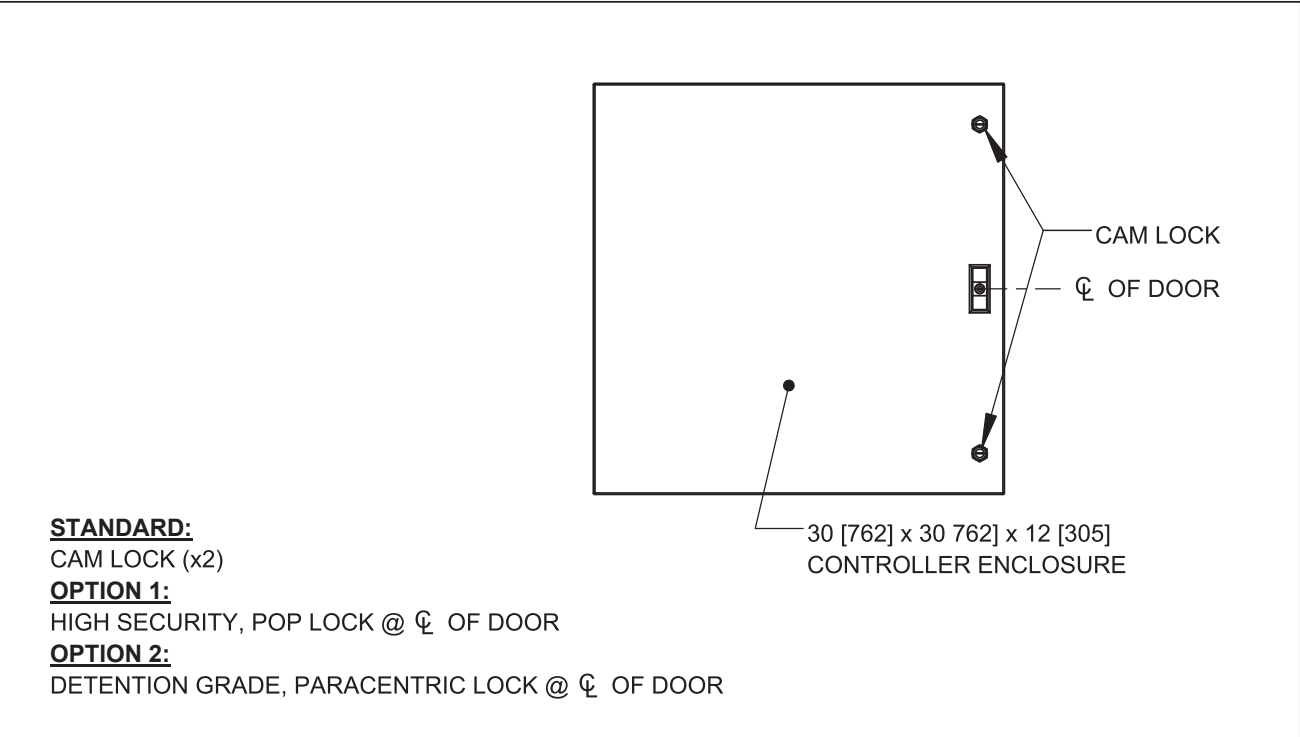
Description: PDDT POST DRIVE TOP TRACK SPEEDGATE		
Customer:		
Finish: SEE FINISH NOTES	Date: 16/12/25	
Drawing No. PDDT-03-09-18	Rev. B	Sheet: 1 of 6



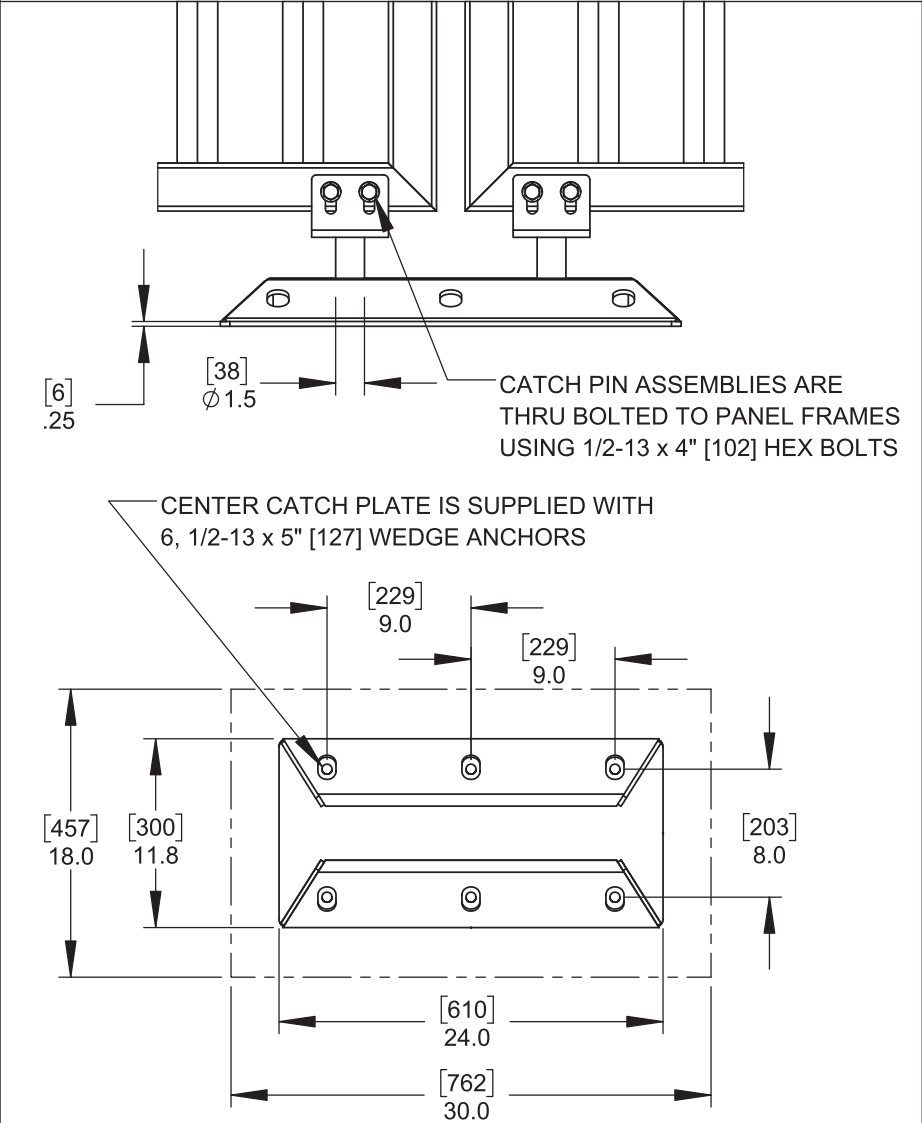
DETAIL E1 STANDARD HIGH SECURITY LOCK



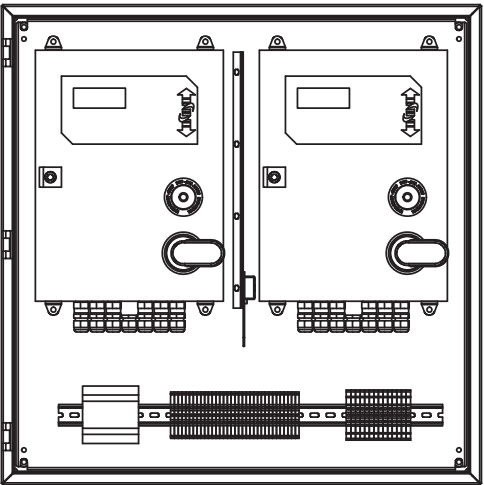
DETAIL E2 OPTIONAL DETENTION GRADE LOCK



DETAIL F CONTROLLER ENCLOSURE LOCK



DETAIL G OPTIONAL CENTER CATCH PLATE

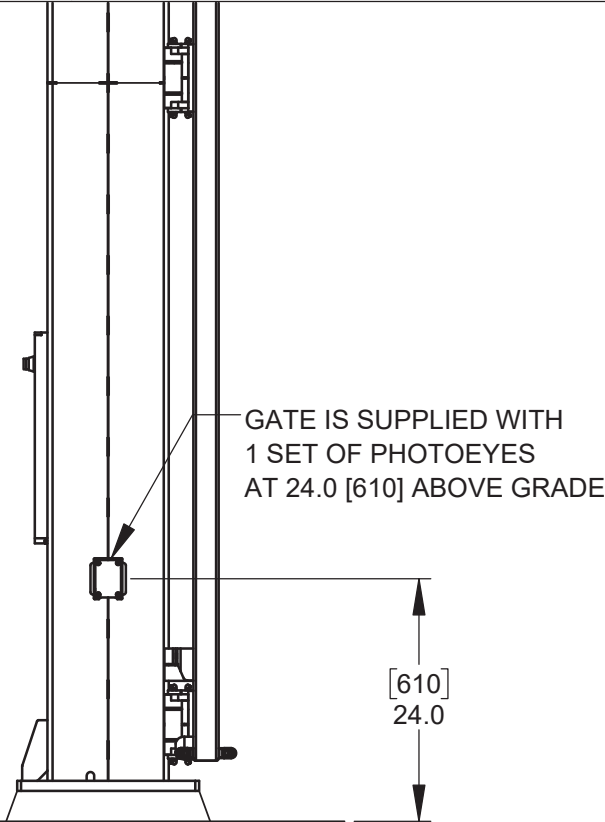


THE NEMA 3R CONTROLLER ENCLOSURE CAN BE FITTED WITH OPTIONAL HEATING OR COOLING KITS TO ACCOMMODATE A WIDE RANGE OF TEMPERATURES.

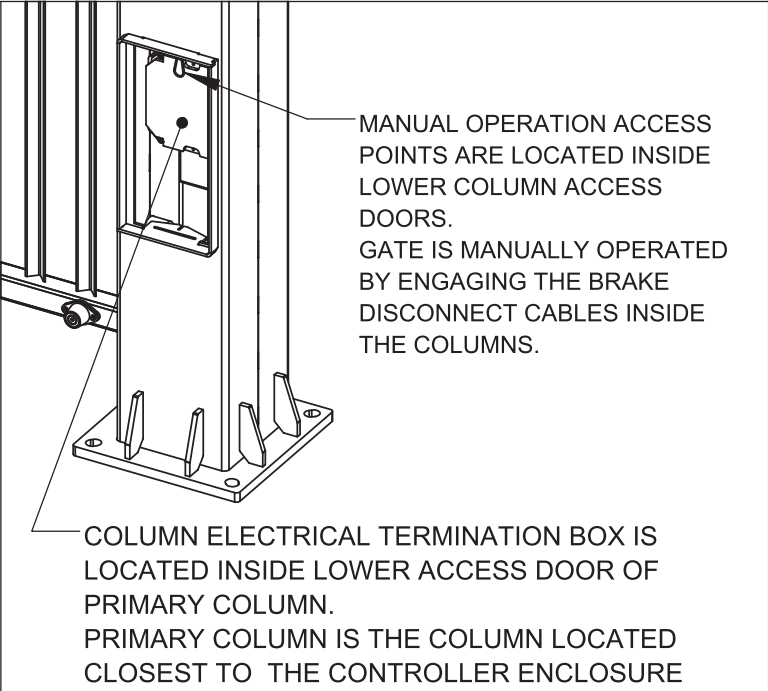
OPTIONAL HOT WEATHER KIT INCLUDES:
EXHAUST FAN, VENT GRILLES, RAIN SHROUDS AND THERMOSTAT.

OPTIONAL COLD WEATHER KIT INCLUDES:
320 WATT SELF-REGULATING HEATER, THERMAL COVER. THERMAL COVER IS ONLY AVAILABLE IF CONTROLLER ENCLOSURE IS FREE STANDING.

DETAIL H ENVIRONMENTAL CONTROLS



DETAIL I PHOTOCELLS

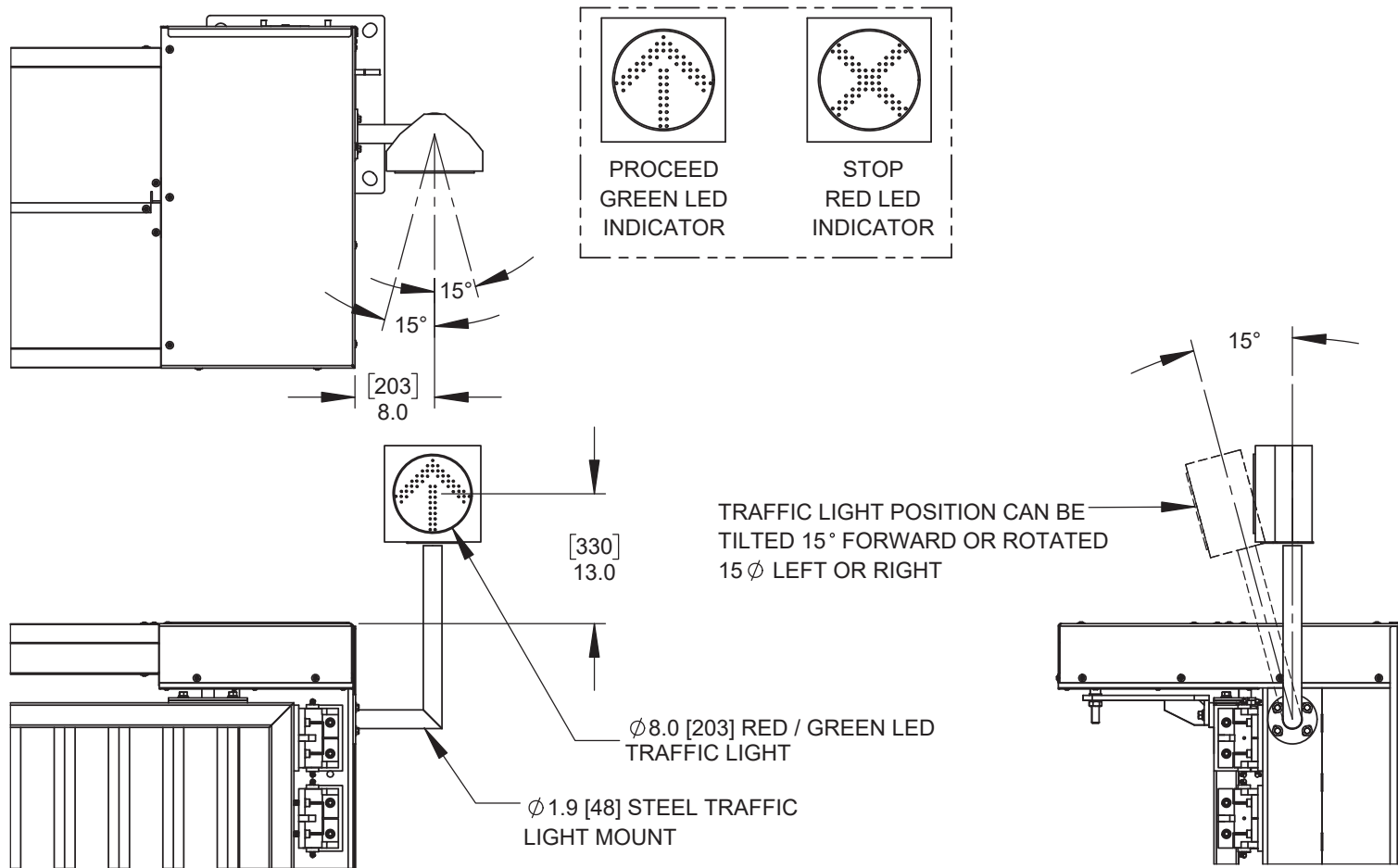


DETAIL J MANUAL OPERATION ACCESS POINT / COLUMN ELECTRICAL TERMINATION

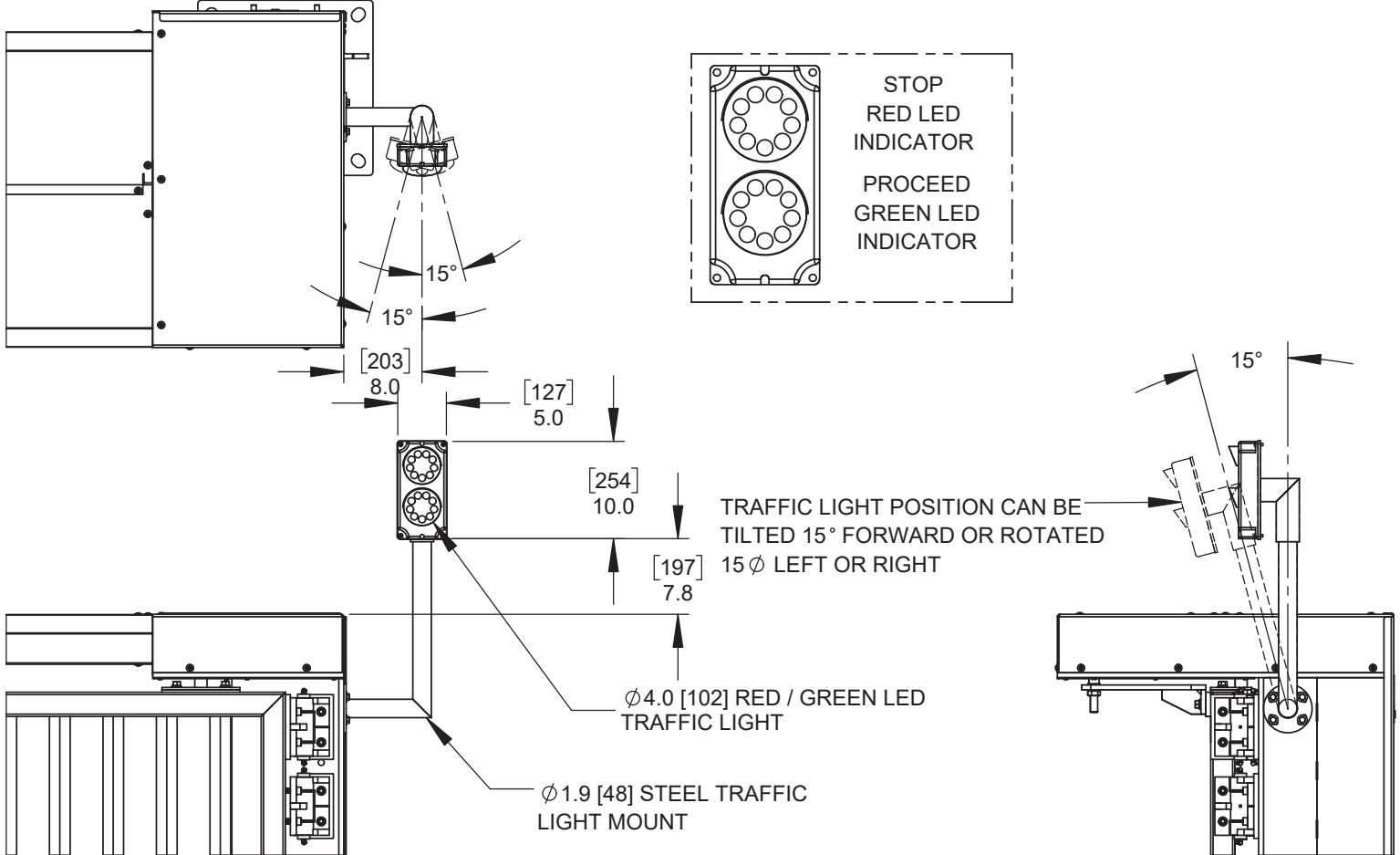


115 Lowson Crescent
Winnipeg, Manitoba, Canada, R3P 1A6
Phone: 1-866-300-1110
Fax: 1-204-284-1868
Web: www.wallaceperimetersecurity.com

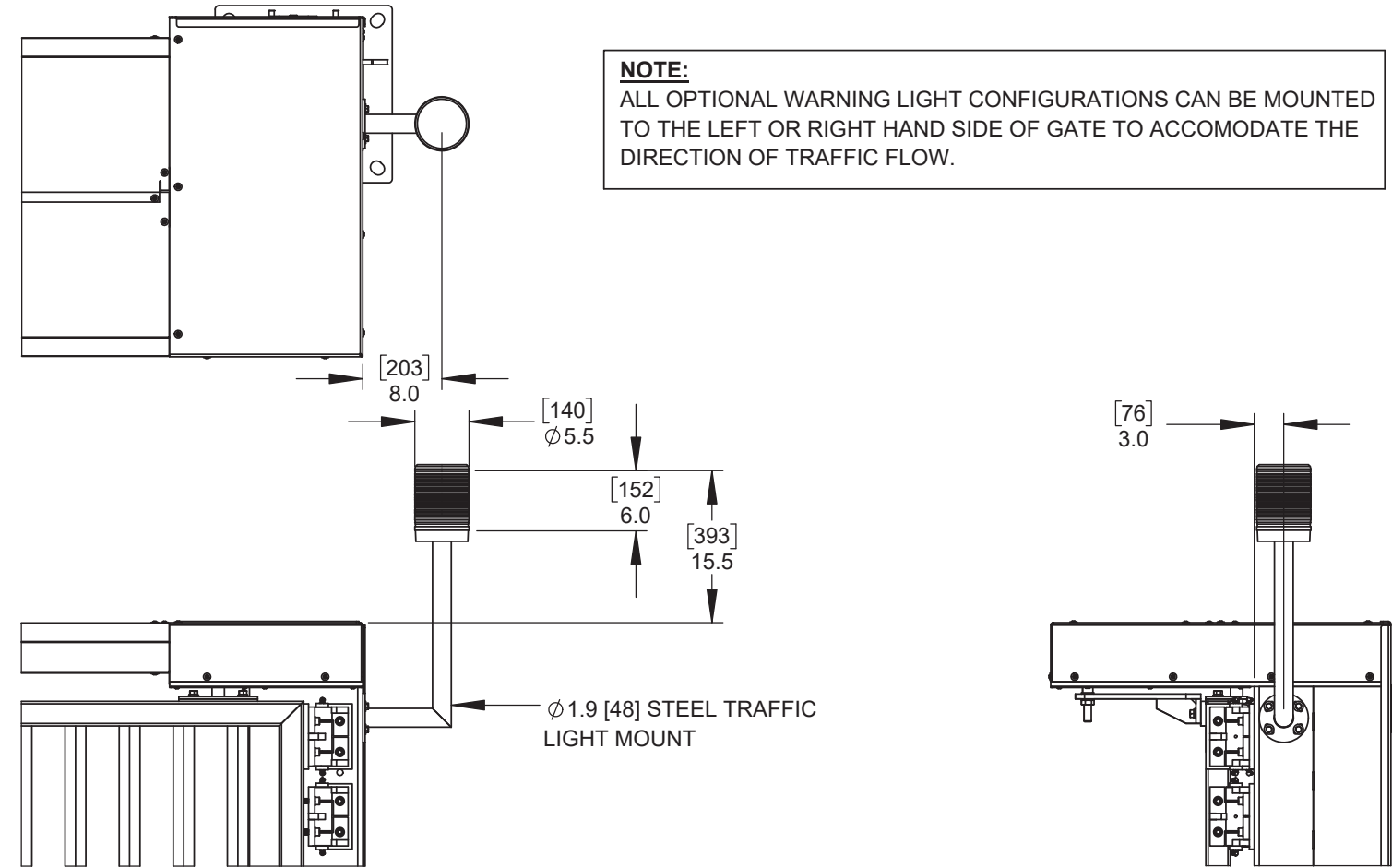
Description:		
PDDT POST DRIVE TOP TRACK SPEEDGATE		
Customer / Project Name:		
Finish:	Date:	
		16/12/25
Drawing No.	Rev.	Sheet:
PDDT-03-09-18	B	3 of 6



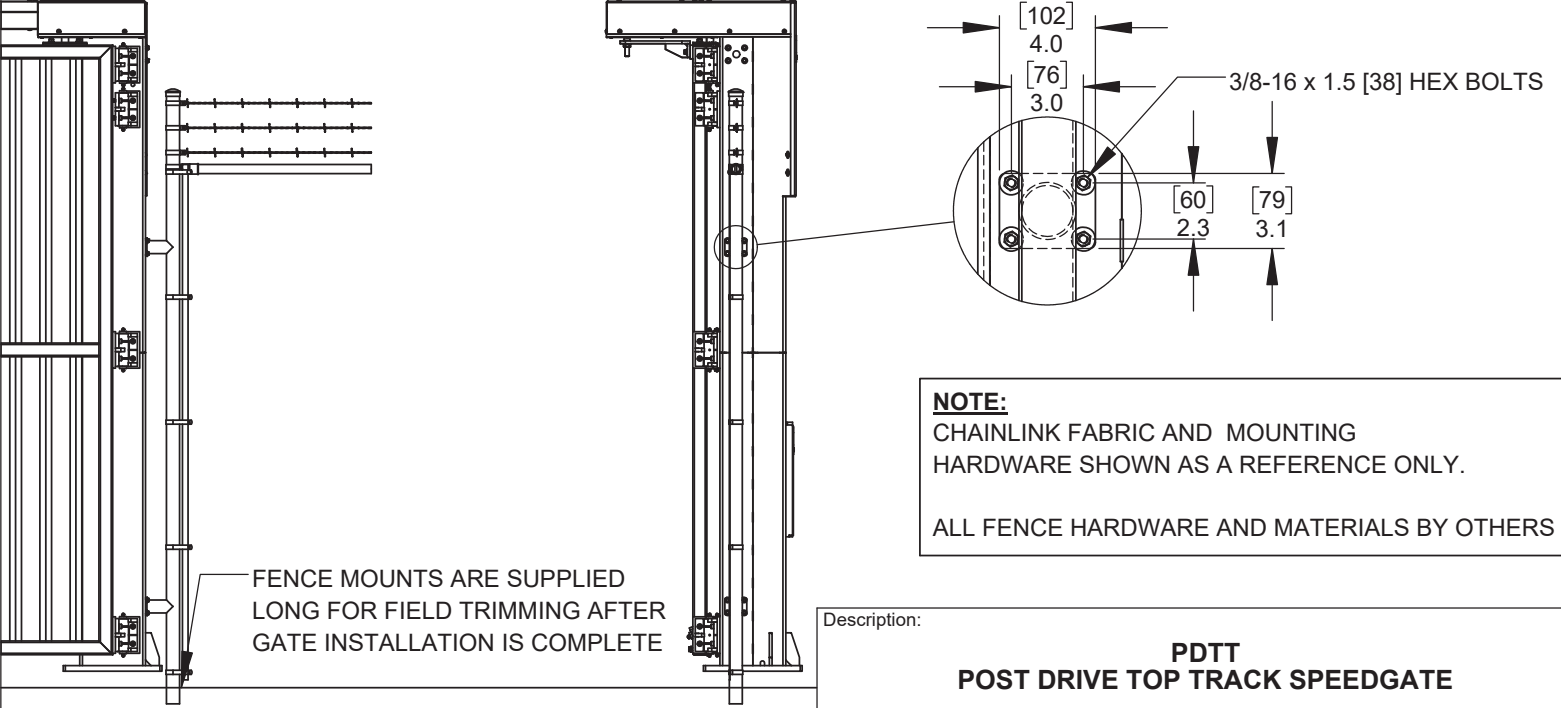
DETAIL K-1 OPTIONAL 8" [203] RED / GREEN LED TRAFFIC LIGHT



DETAIL K-2 OPTIONAL 4" [102] RED / GREEN LED TRAFFIC LIGHT



DETAIL K-3 OPTIONAL AMBER STROBE LIGHT

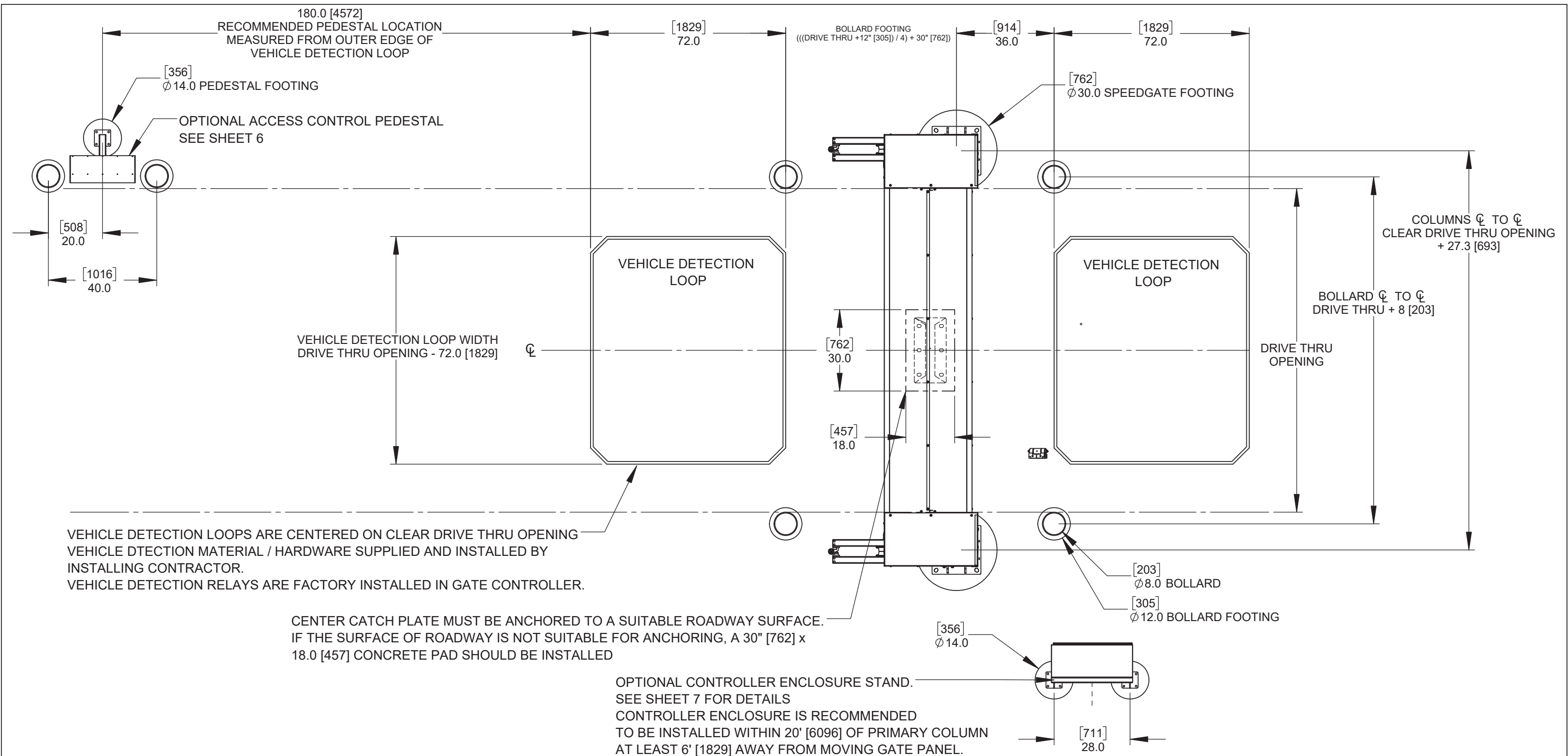


DETAIL L OPTIONAL FENCE MOUNTS



115 Lowson Crescent
Winnipeg, Manitoba, Canada, R3P 1A6
Phone: 1-866-300-1110
Fax: 1-204-284-1868
Web: www.wallaceperimetersecurity.com

Description:		
PDDT POST DRIVE TOP TRACK SPEEDGATE		
Customer / Project Name:		
Finish:	Date:	
	16/12/25	
Drawing No.	Rev.	Sheet:
PDDT-03-09-18	B	4 of 6



NOTE:
BOLLARD FOUNDATION LOCATIONS ARE SUPPLIED AS A REFERENCE ONLY.
ALL FINAL MATERIALS AND DIMENSIONS ARE SUPPLIED AND INSTALLED BY OTHERS.



115 Lawson Crescent
Winnipeg, Manitoba, Canada, R3P 1A6
Phone: 1-866-300-1110
Fax: 1-204-284-1868
Web: www.wallaceperimetersecurity.com

Description:		
PDDT POST DRIVE TOP TRACK SPEEDGATE GENERIC GATE LAYOUT		
Customer / Project Name:		
Finish:	Date:	
		16/12/25
Drawing No.	Rev.	Sheet:
PDDT-03-09-18	B	5 of 6

