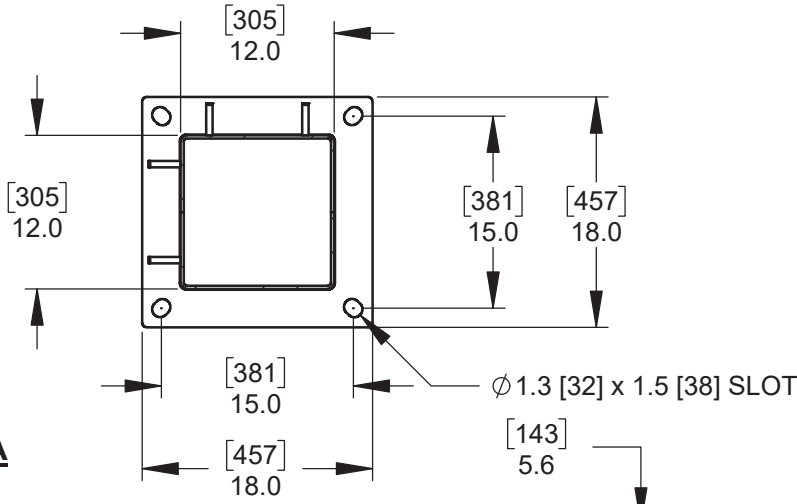
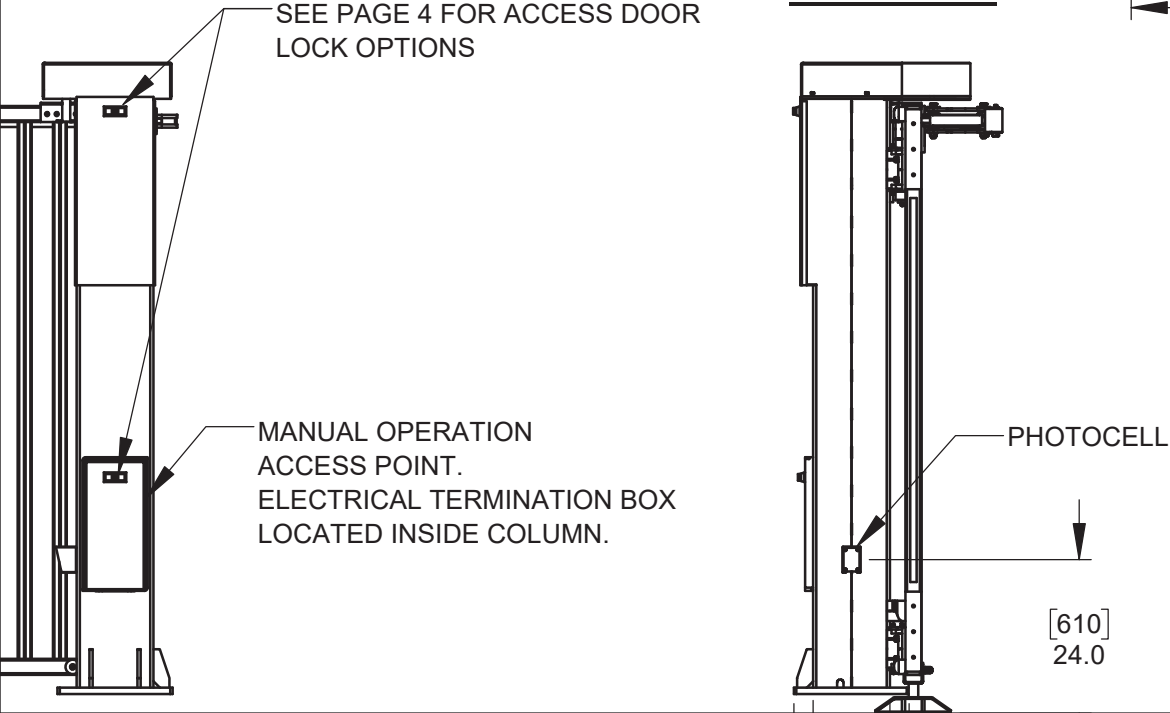


SECTION B-B - COLUMN BASE PLATE



SECTION A-A



12.0 [305] x 12.0 [305] x .25 [6] COLUMN
18.0 [457] x 18.0 [457] x 1.0 [25] BASE PLATE

2 ELECTRICAL CONTROLLERS MOUNTED IN A 30.0" [762] x 30.0" [762] x 12.0" [305] NEMA 3R ENCLOSURE c/w WIRE HARNESS.
STANDARD WIRE HARNESS LENGTH ALLOWS FOR CONTROLLER TO BE PLACED UP TO 30' [9144] FROM PRIMARY COLUMN. (COLUMN LOCATED CLOSEST TO ENCLOSURE)
OPTIONAL EXTENDED WIRE HARNESS IS AVAILABLE WHERE CONTROLLERS ARE TO BE MOUNTED BEYOND STANDARD WIRE HARNESS LENGTH. MAX. HARNESS LENGTH IS DETERMINED BY CLEAR OPENING WIDTH.
ENCLOSURE, CONTROLLERS AND WIRE HARNESS BY WALLACE PERIMETER SECURITY, CONDUIT BY OTHERS. SEE DETAIL A ON PAGE 2 FOR CONDUIT SIZES AND QUANTITIES.
POWER REQUIREMENTS: 240V, SINGLE PHASE, 20A

FINISH NOTES:
STANDARD FINISH: HOT DIPPED GALVANIZED
OPTIONAL POWDER COAT PAINT FINISH AVAILABLE

NOTE
GATE IS PREPARED FOR FIELD INSTALLATION OF SENSING EDGES PER UL UPDATE

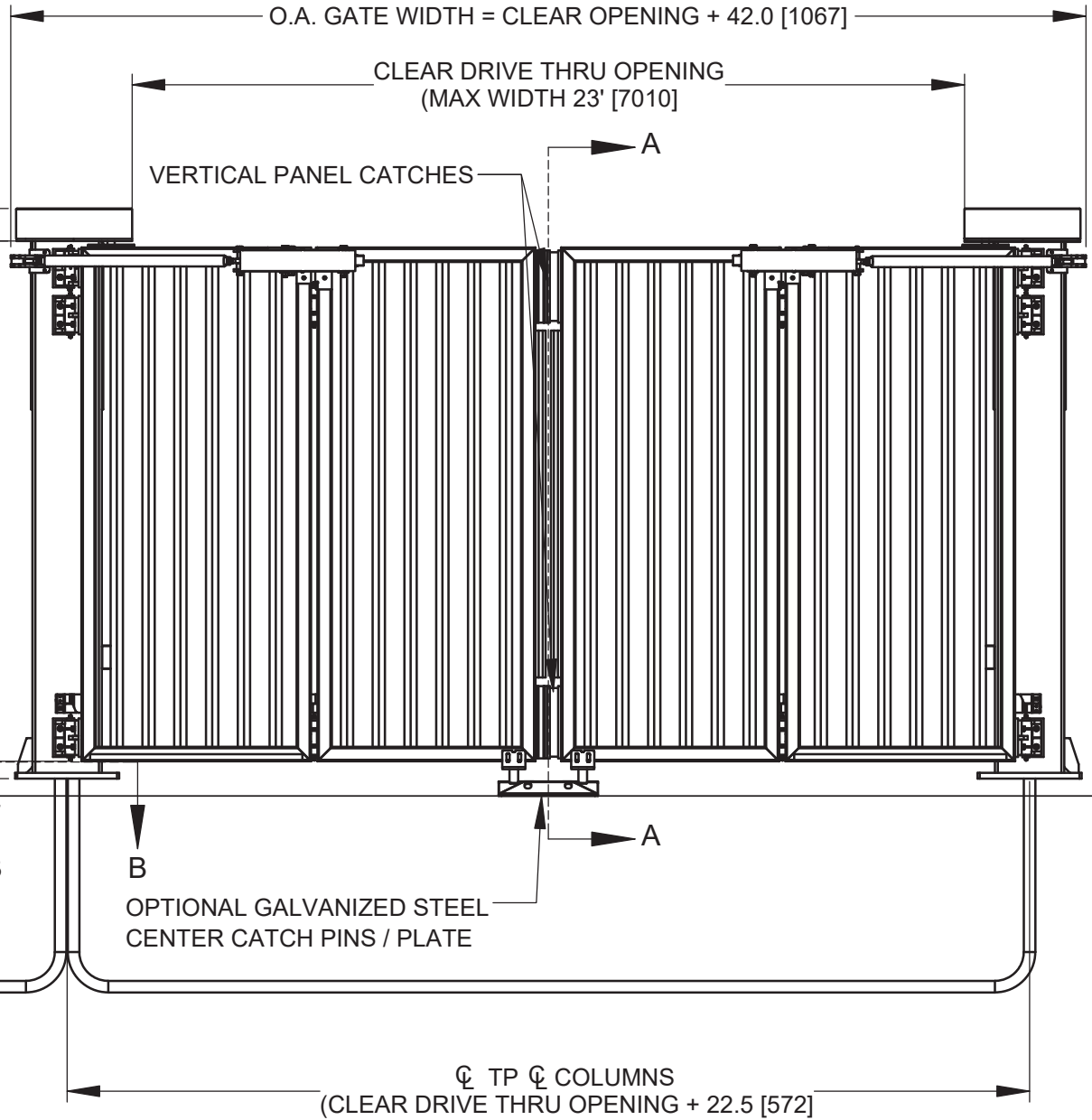
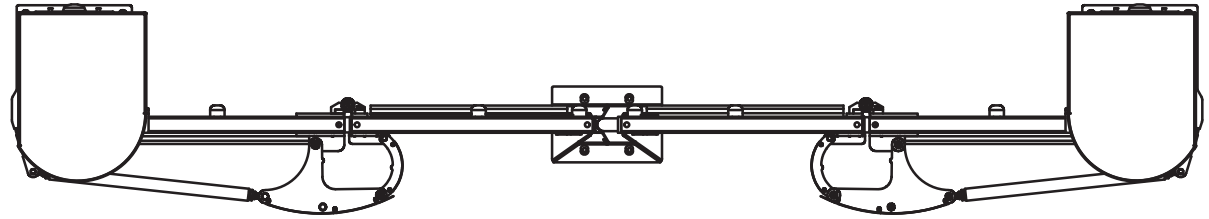
DIMENSIONS ARE SHOWN IN INCHES, DIMENSIONS IN [] ARE IN MILLIMETERS

STANDARD GATE HEIGHTS:

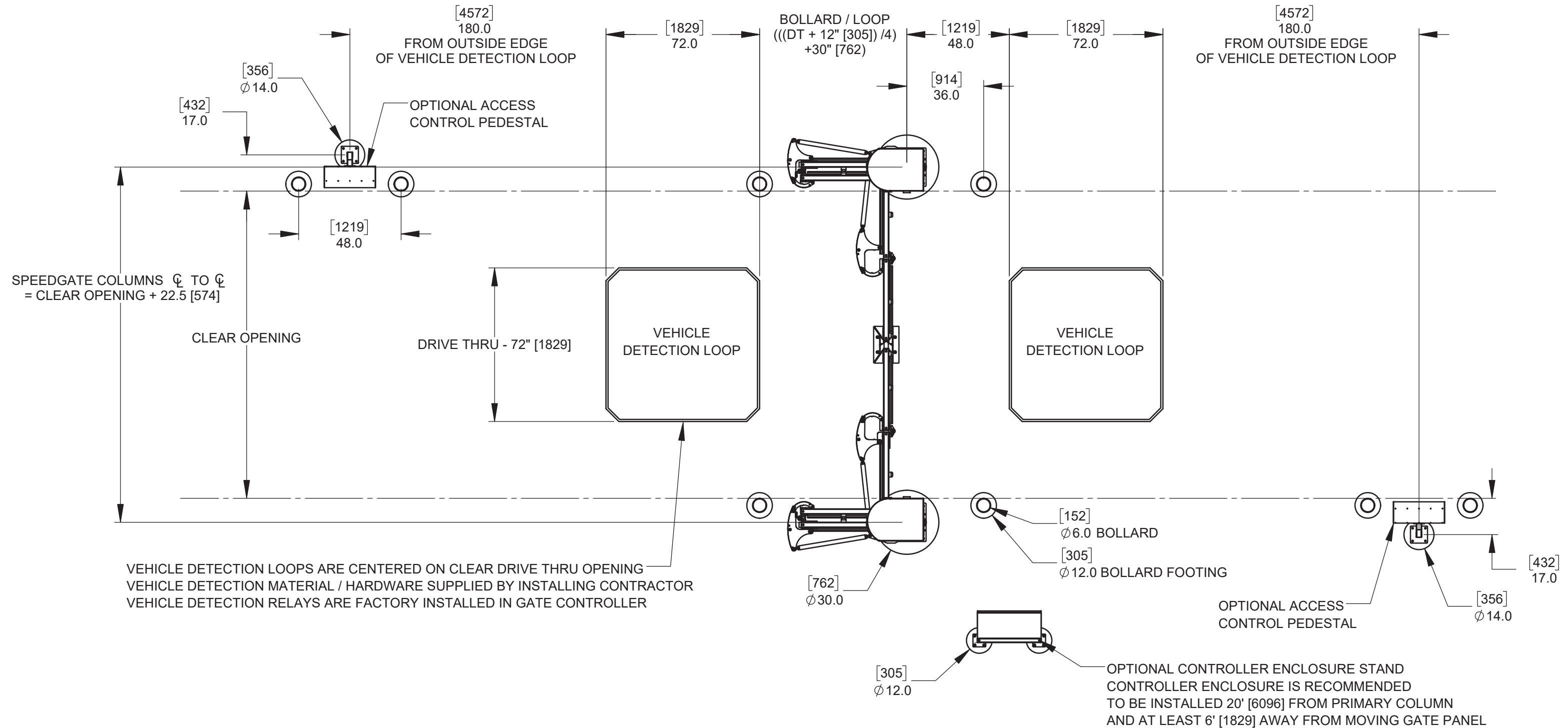
6' [1.8M]	72.0" [1829]
7' [2.1M]	84.0" [2134]
8' [2.4M]	96.0 " [2438]
9' [2.7M]	108" [2743]
10' [3.0M]	120.0" [3048]

WALLACE
PERIMETER SECURITY

115 Lowson Crescent
Winnipeg, Manitoba, Canada, R3P 1A6
Phone: 1-866-300-1110
Fax: 1-204-284-1868
Web: www.wallaceperimetersecurity.com



Description: PDXT POST DRIVE TRACKELSS SPEEDGATE STANDARD DIMENSIONS / NOTES		
Customer:		
Finish: SEE FINISH NOTES	Date: 16/12/25	
Drawing No. PDXT	Rev. A	Sheet: 1 of 6



NOTE:
 BOLLARD LOCATIONS ARE SUPPLIED AS A REFERENCE ONLY.
 ALL FINAL MATERIALS AND DIMENSIONS ARE SUPPLIED AND INSTALLED BY OTHERS.



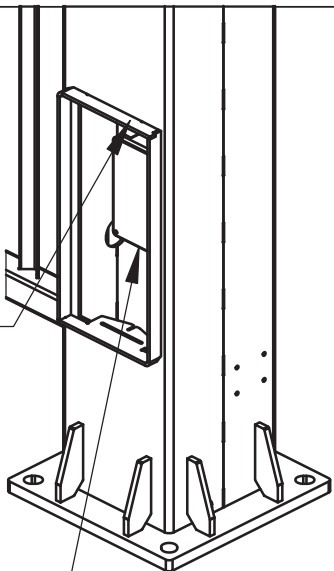
115 Lowson Crescent
 Winnipeg, Manitoba, Canada, R3P 1A6
 Phone: 1-866-300-1110
 Fax: 1-204-284-1868
 Web: www.wallaceperimetersecurity.com

Description: PDXT POST DRIVE TRACKLESS SPEEDGATE PLAN VIEW		
Customer:		
Finish: SEE FINISH NOTES	Date: 16/12/25	
Drawing No. PDXT	Rev. A	Sheet: 2 of 3

SECONDARY COLUMN



COLUMN ELECTRICAL TERMINATION BOX —
IS LOCATED INSIDE LOWER ACCESS DOOR
OF PRIMARY COLUMN.
PRIMARY COLUMN IS THE COLUMN LOCATED
CLOSEST TO THE CONTROLLER ENCLOSURE



ALL SPEEDGATES ARE SUPPLIED WITH
1 SET4S OF PHOTOCELLS MOUNTED AT
24.0" [610] ABOVE GRADE

[610]
24.0

DETAIL D - PHOTOCELLS



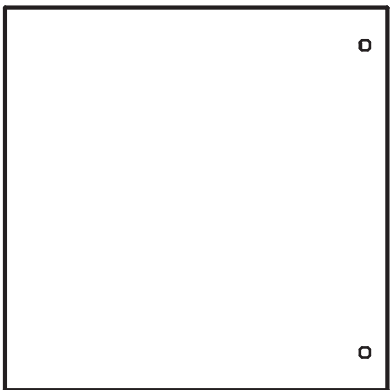
- 2, .13" [3] STEEL ANCHOR TEMPLATES FOR FIELD CONSTRUCTION OF ANCHOR DRILLING TEMPLATE.

- 8, 1" [25] HILTI HAS-E-16 EPOXY ANCHORS
- 8, HILTI HVU ADHESIVE CAPSULES

OPTIONAL ANCHOR BOLT KIT:

- 8, 1" [25] HILTI HAS-E-16 EPOXY ANCHORS
- 8, HILTI HVU ADHESIVE CAPSULES

DETAIL B - OPTIONAL ANCHOR BOLT TEMPLATE



OPTIONAL HOT WEATHER KIT INCLUDES:

EXHAUST FAN, VENT GRILLES, RAIN SHROUDS
AND THERMOSTAT.

OPTIONAL COLD WEATHER KIT INCLUDES:

320 WATT SELF-REGULATING HEATER, THERMAL COVER.

NOTE:

THERMAL COVER IS ONLY AVAILABLE IF CONTROLLER ENCLOSURE IS FREE STANDING.

DETAIL E - ENVIROMENTAL CONTROLS

NOTES:

INCLUDED WITH SPEEDGATE:

- 2, ELECTRONIC GATE CONTROLLERS IN A 30" [762] x 30" [762] x 12" [305] NEMA 3R ENCLOSURE
- STANDARD ELECTRICAL WIRING HARNESS WHICH ALLOWS CONTROL ENCLOSURE TO BE MOUNTED UP TO 30' [9.1M] FROM PRIMARY COLUMN. OPTIONAL EXTENDED WIRING HARNESS AVAILABLE.
- KEY(S) AND LOCK(S) FOR ALL ACCESS PANELS, SEE SHEET 3 FOR LOCK OPTIONS.

NOT INCLUDED WITH SPEEDGATE:

- GATE MOUNTING HARDWARE, OPTIONAL ANCHOR BOLT \ ANCHOR TEMPLATE KITS AVAILABLE.
- VEHICLE DETECTION LOOPS
- GROUT TO FILL GAP UNDER COLUMN BASE PLATES WHEN GATE LEVELING IS COMPLETE.



115 Lawson Crescent
Winnipeg, Manitoba, Canada, R3P 1A6
Phone: 1-866-300-1110
Fax: 1-204-284-1868
Web: www.wallaceperimetersecurity.com

Description:

PDXT POST DRIVE TRACKLESS SPEEDGATE STANDARD NOTES AND OPTIONS

Customer:

SEE FINISH NOTES

Drawing No.

PDXT

Finish:

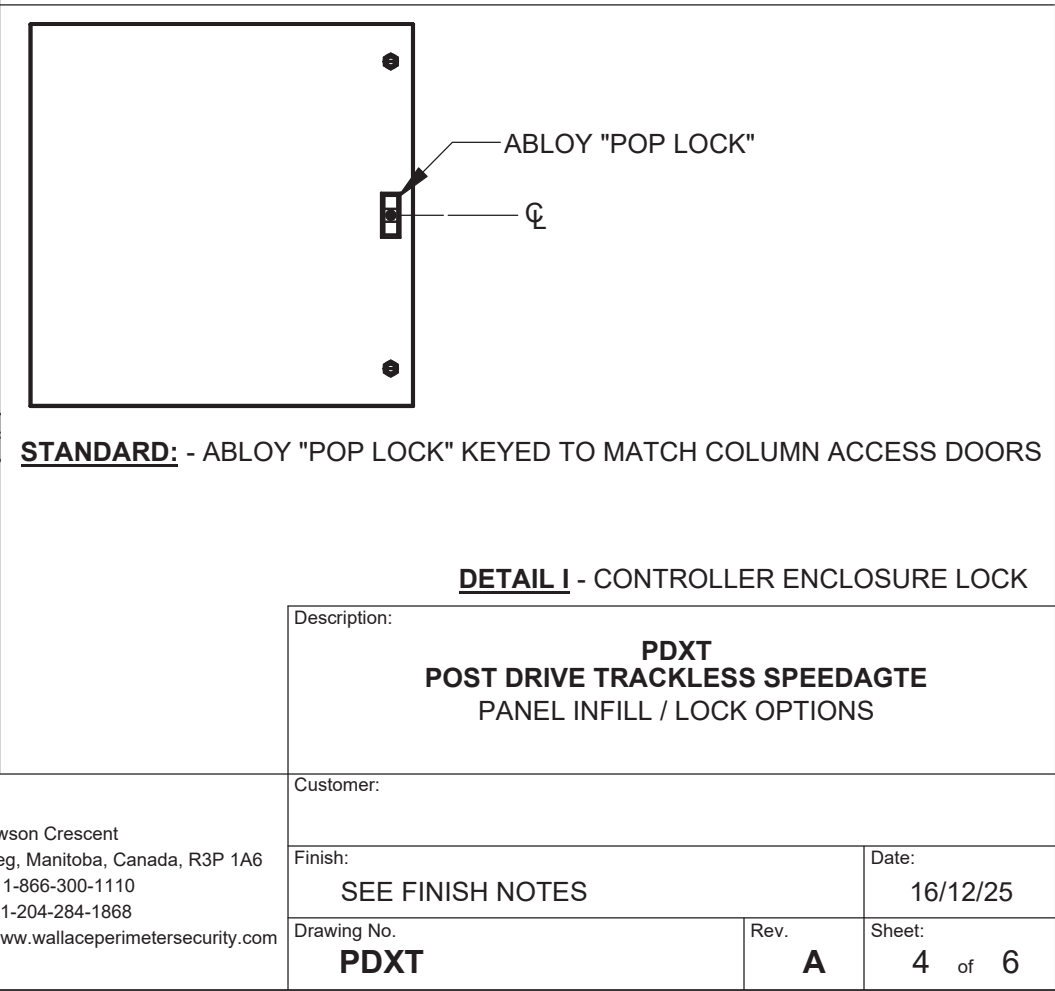
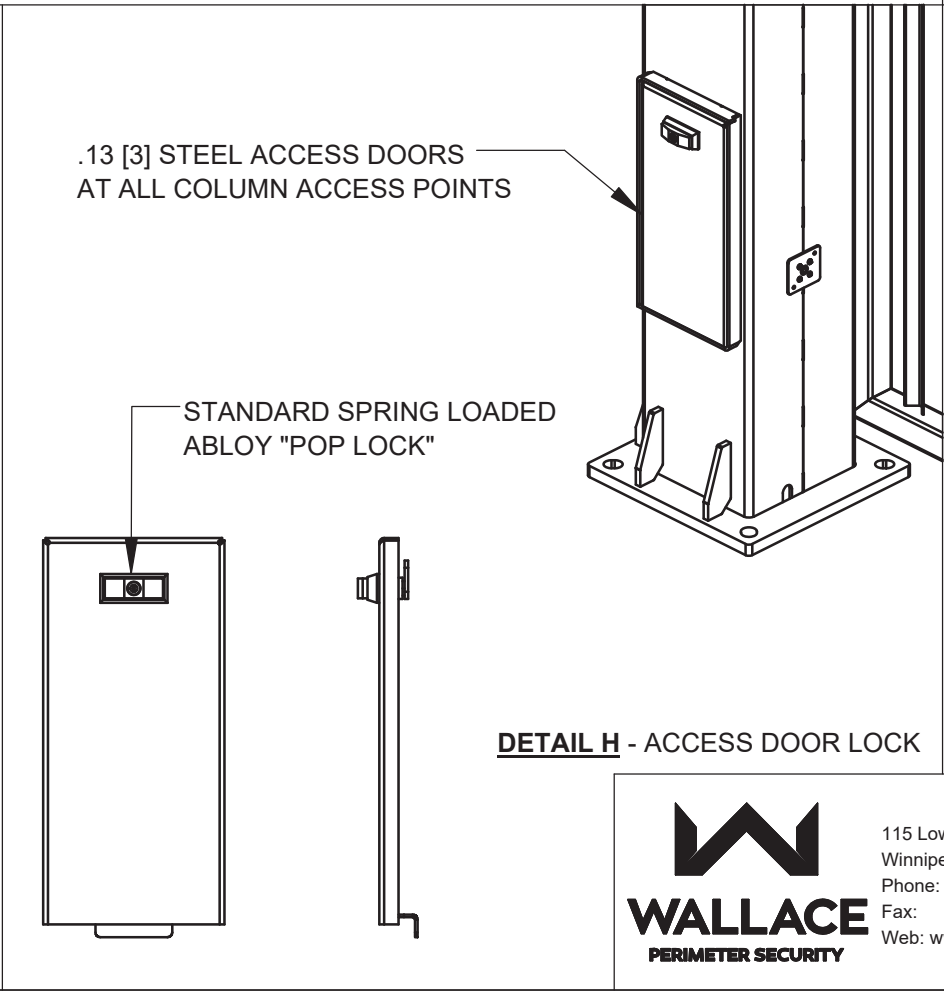
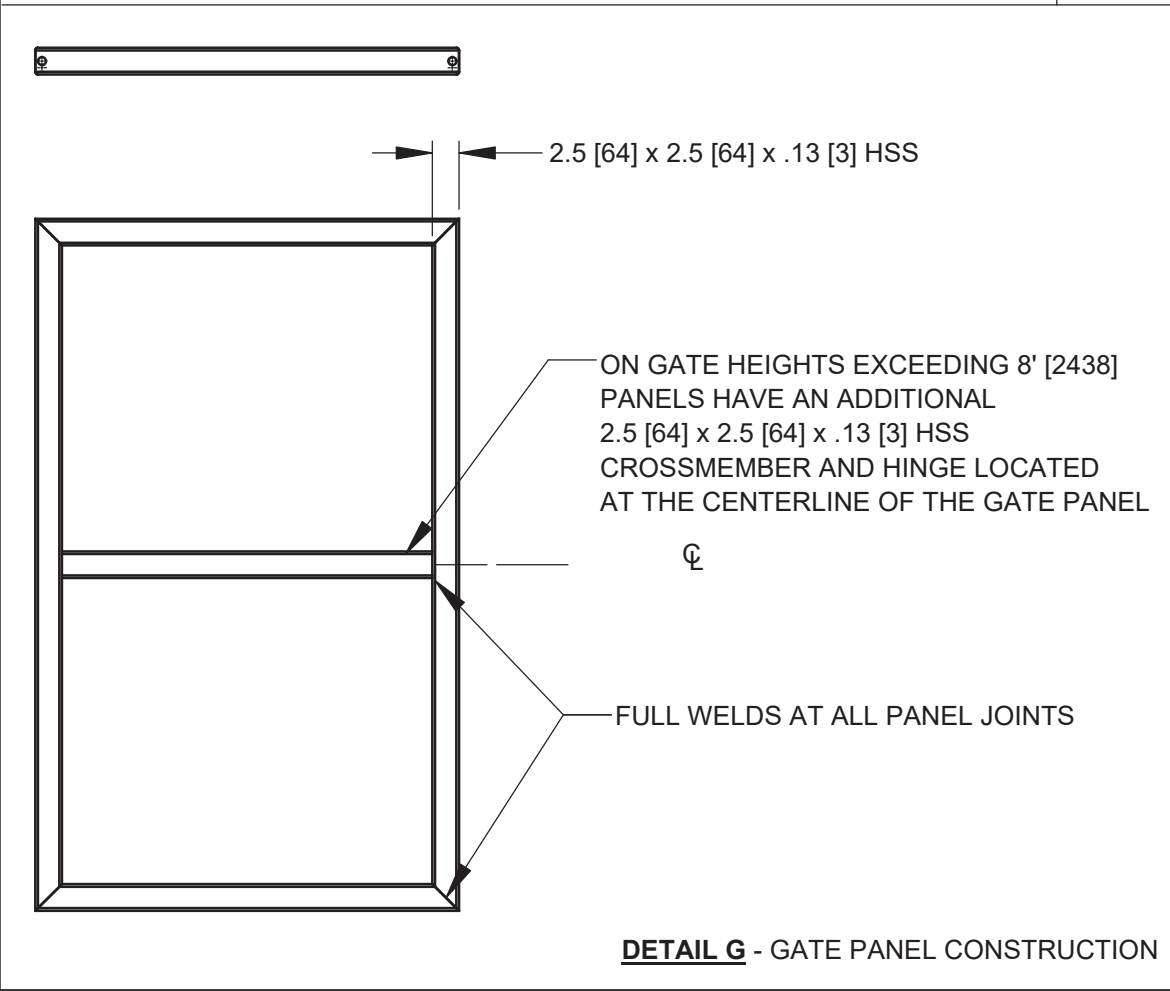
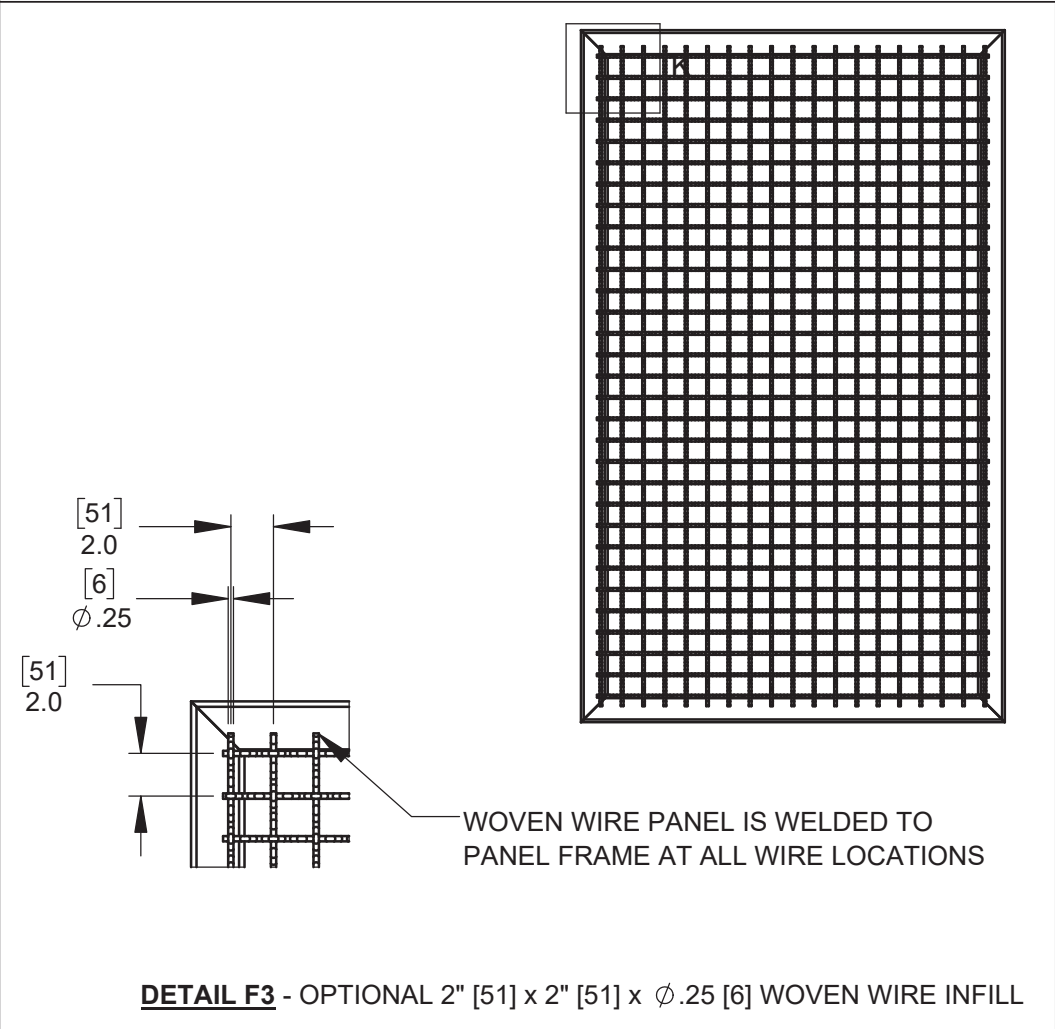
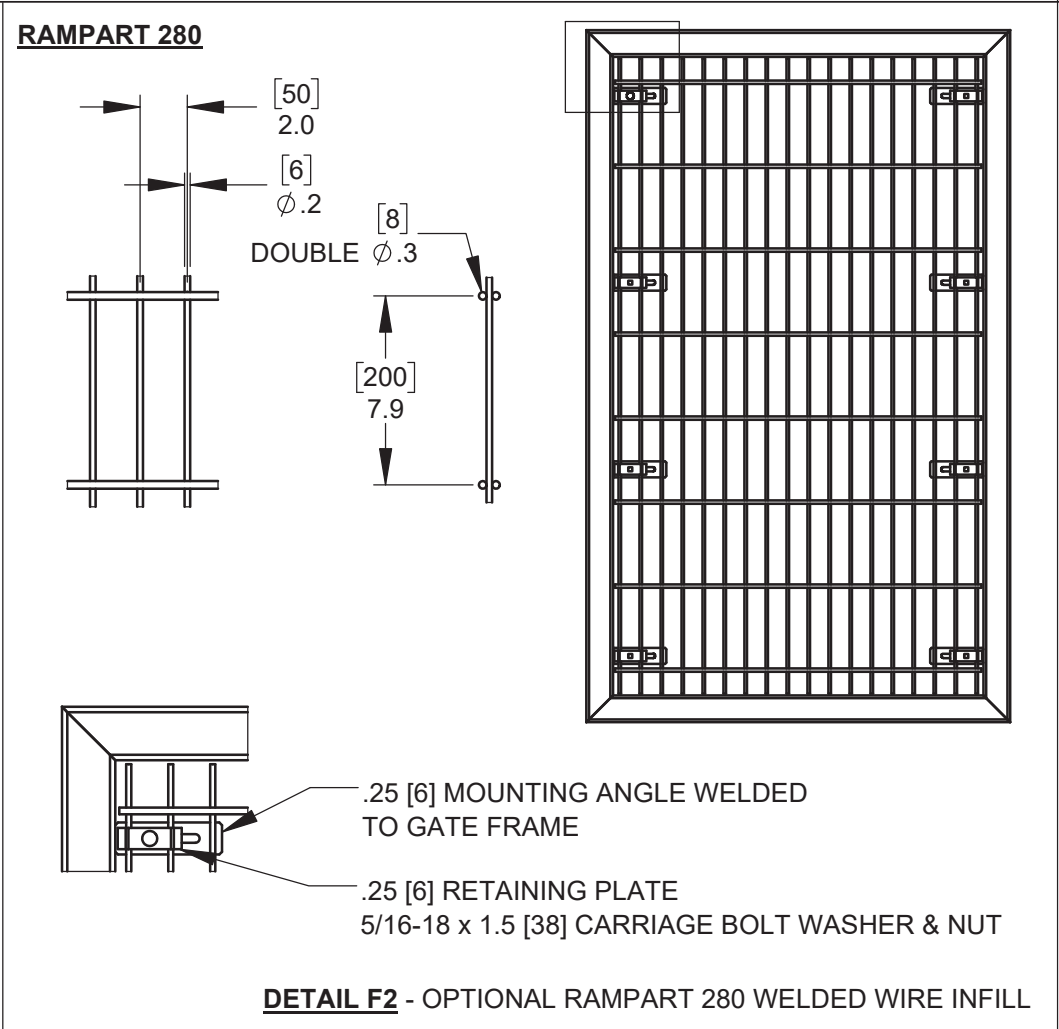
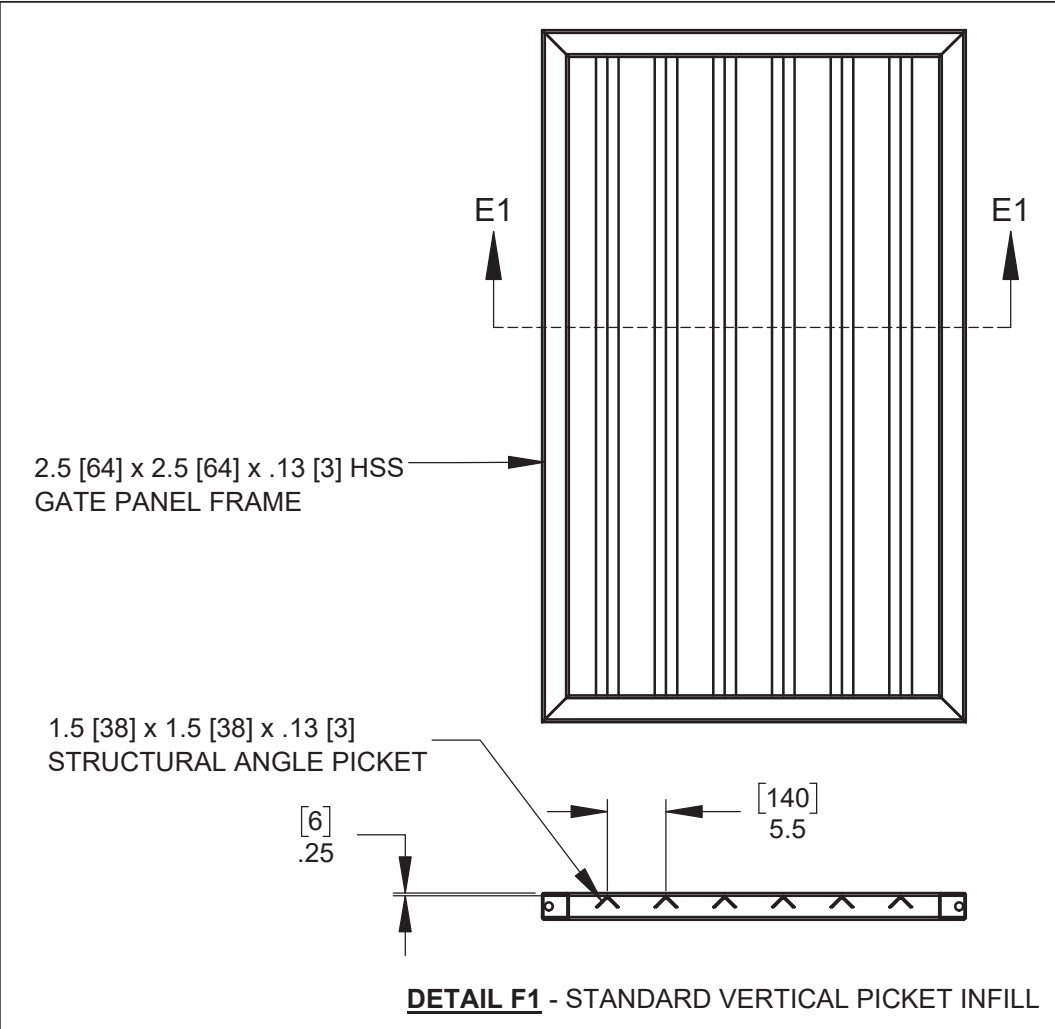
SEE FINISH NOTES

Date:

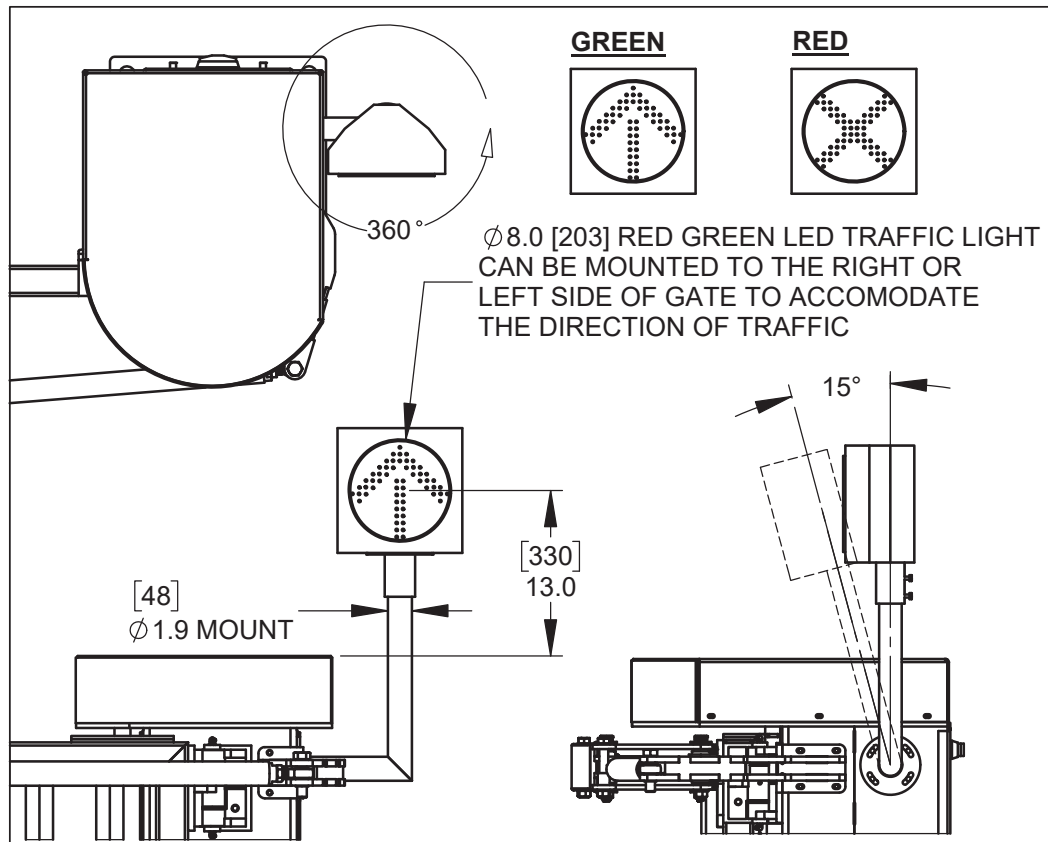
16/12/25

Sheet

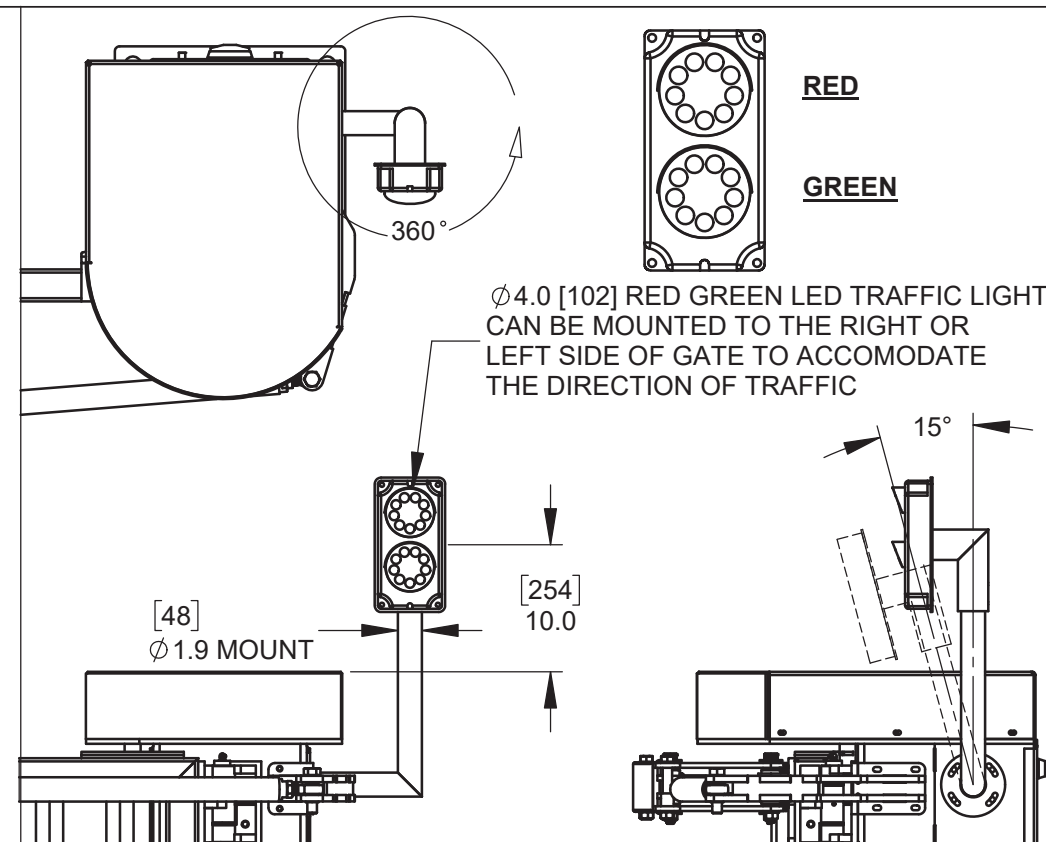
3 of 3



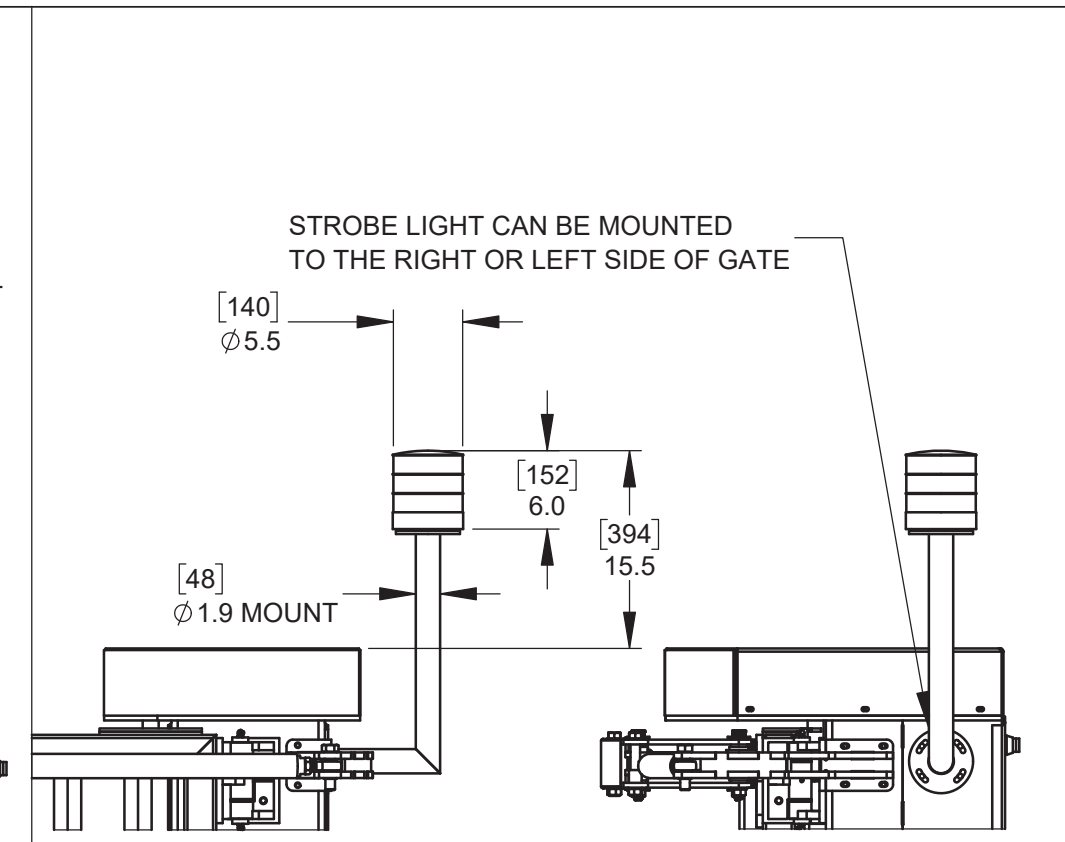
115 Lowson Crescent
Winnipeg, Manitoba, Canada, R3P 1A6
Phone: 1-866-300-1110
Fax: 1-204-284-1868
Web: www.wallaceperimetersecurity.com



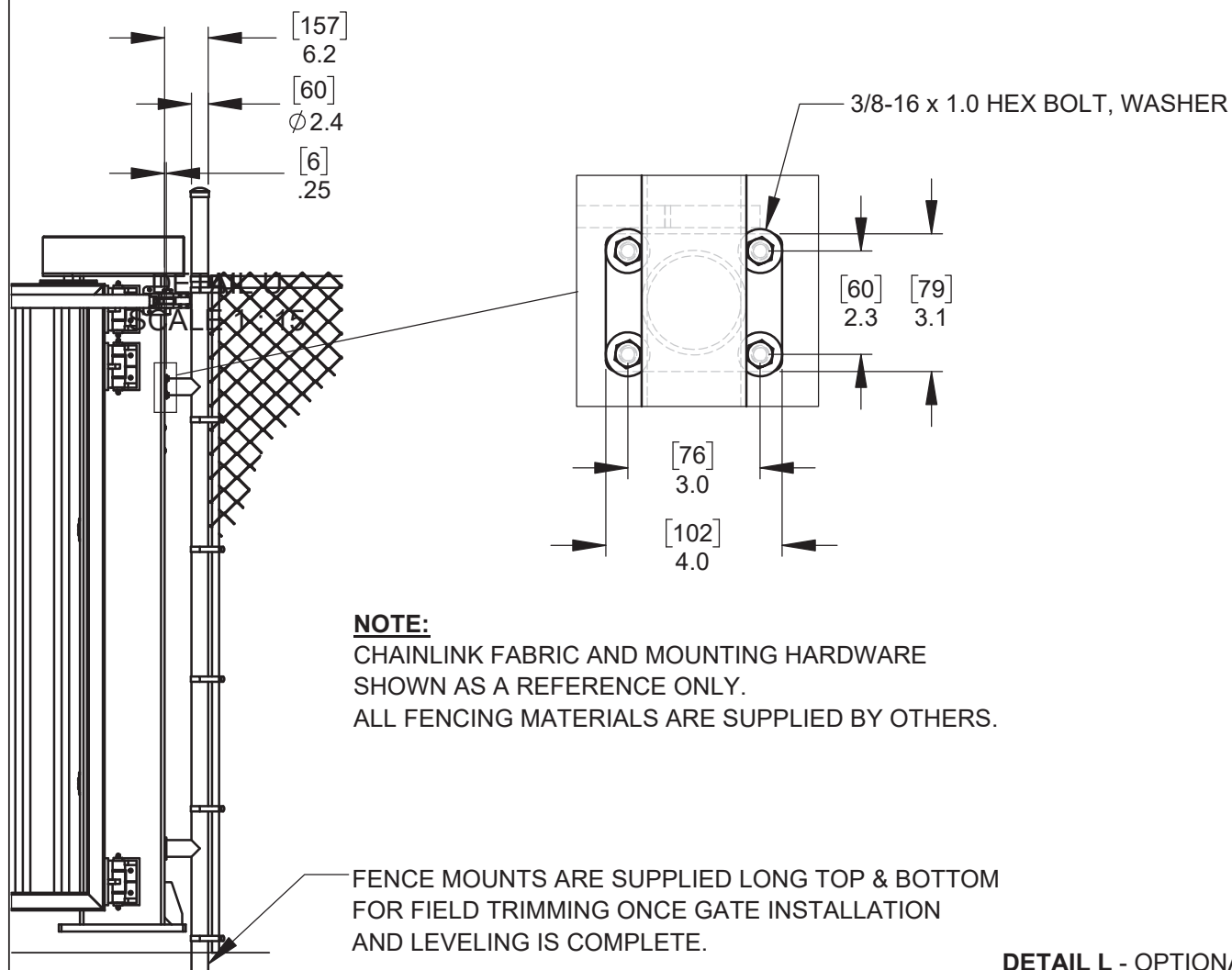
DETAIL J-1 - OPTIONAL 8" [203] RED / GREEN LED TRAFFIC LIGHT



DETAIL J-2 - OPTIONAL 4" [102] RED / GREEN LED TRAFFIC LIGHT



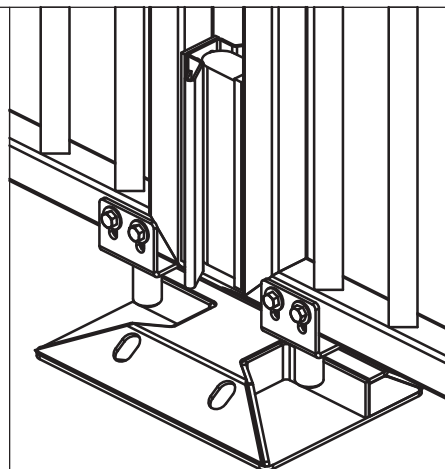
DETAIL K - OPTIONAL STROBE LIGHT



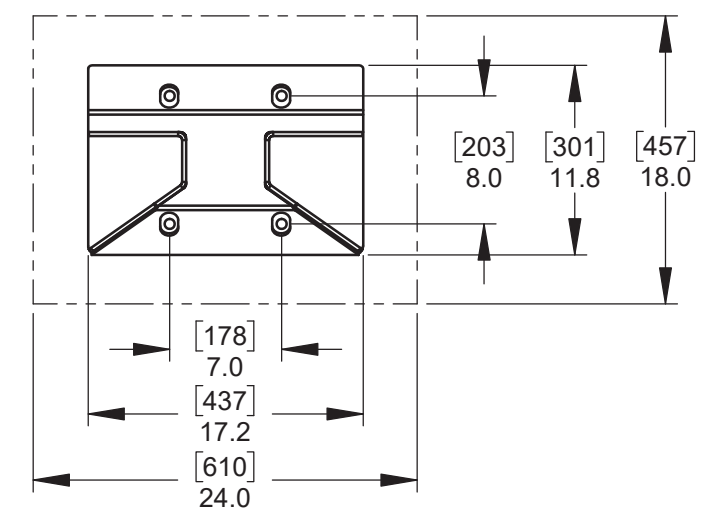
NOTE:
CHAINLINK FABRIC AND MOUNTING HARDWARE
SHOWN AS A REFERENCE ONLY.
ALL FENCING MATERIALS ARE SUPPLIED BY OTHERS.

FENCE MOUNTS ARE SUPPLIED LONG TOP & BOTTOM
FOR FIELD TRIMMING ONCE GATE INSTALLATION
AND LEVELING IS COMPLETE.

DETAIL L - OPTIONAL FENCE MOUNT



NOTE:
CENTER CATCH PLATE MUST BE MOUNTED TO A SUITABLE ROADWAY SURFACE.
IF THE ROADWAY IS NOT SUITABLE FOR ANCHORING, A 24.0" [610] x 18" [457] PAD MUST BE INSTALLED.
CENTER CATCH PLATE IS SUPPLIED WITH 4 - 1/2" [13] x 5" [127] WEDGE ANCHORS.



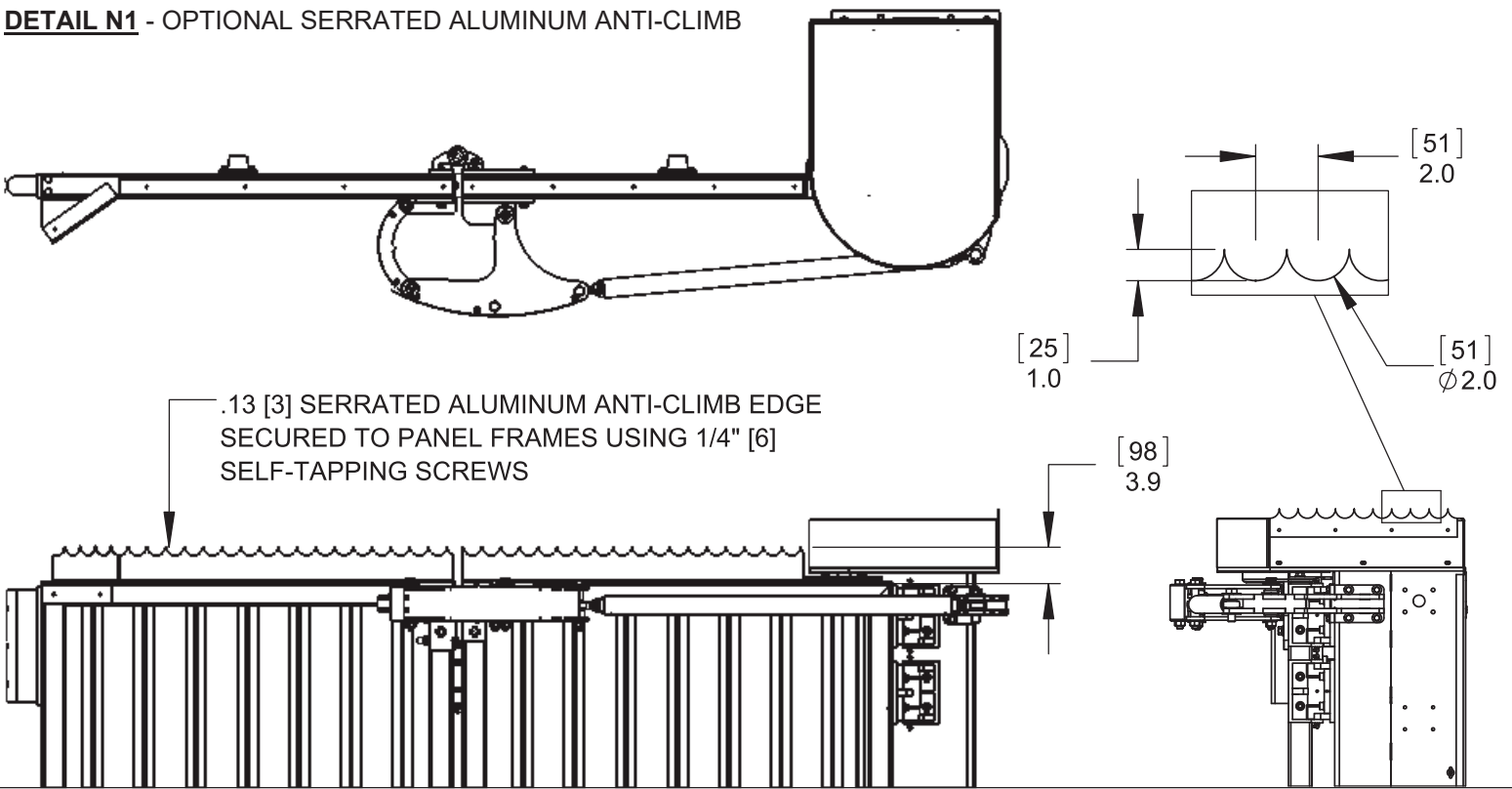
DETAIL M - OPTIONAL CENTER CATCH PLATE



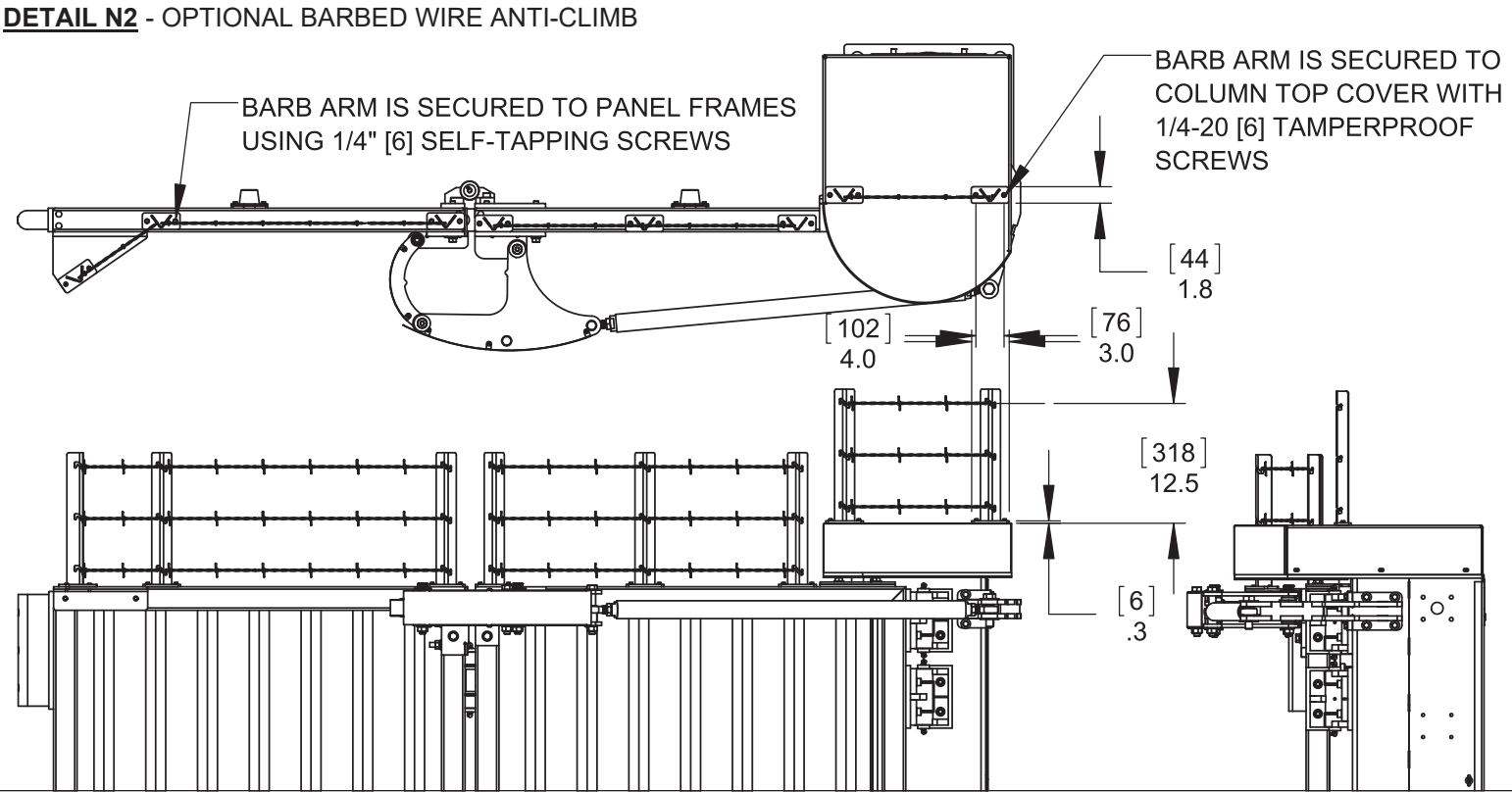
115 Lowson Crescent
Winnipeg, Manitoba, Canada, R3P 1A6
Phone: 1-866-300-1110
Fax: 1-204-284-1868
Web: www.wallaceperimetersecurity.com

Description:		
PDXT POST DRIVE TRACKLESS SPEEDGATE TRAFFIC / STROBE LIGHTS FENCE MOUNT / CENTER CATCH PINS		
Customer:		
Finish:	SEE FINISH NOTES	Date: 16/12/25
Drawing No. PDXT	Rev. A	Sheet: 5 of 6

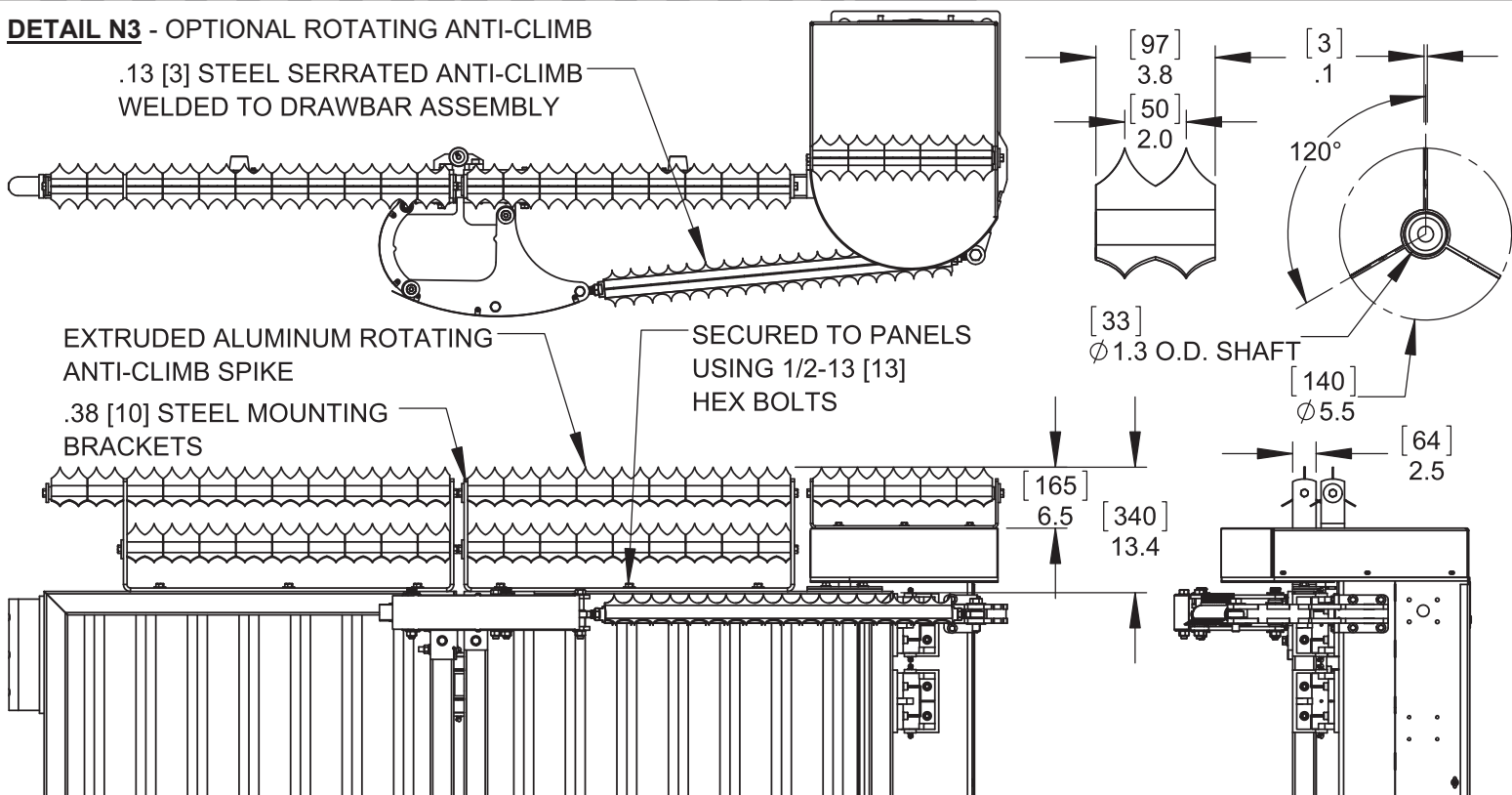
DETAIL N1 - OPTIONAL SERRATED ALUMINUM ANTI-CLIMB



DETAIL N2 - OPTIONAL BARBED WIRE ANTI-CLIMB



DETAIL N3 - OPTIONAL ROTATING ANTI-CLIMB



Description: PDXT POST DRIVE TRACLESS SPEEDGATE ANTI-CLIMB OPTIONS		
Customer:		
Finish: SEE FINISH NOTES	Date: 16/12/25	
Drawing No. PDXT	Rev. A	Sheet: 6 of 6



115 Lowson Crescent
Winnipeg, Manitoba, Canada, R3P 1A6
Phone: 1-866-300-1110
Fax: 1-204-284-1868
Web: www.wallaceperimetersecurity.com